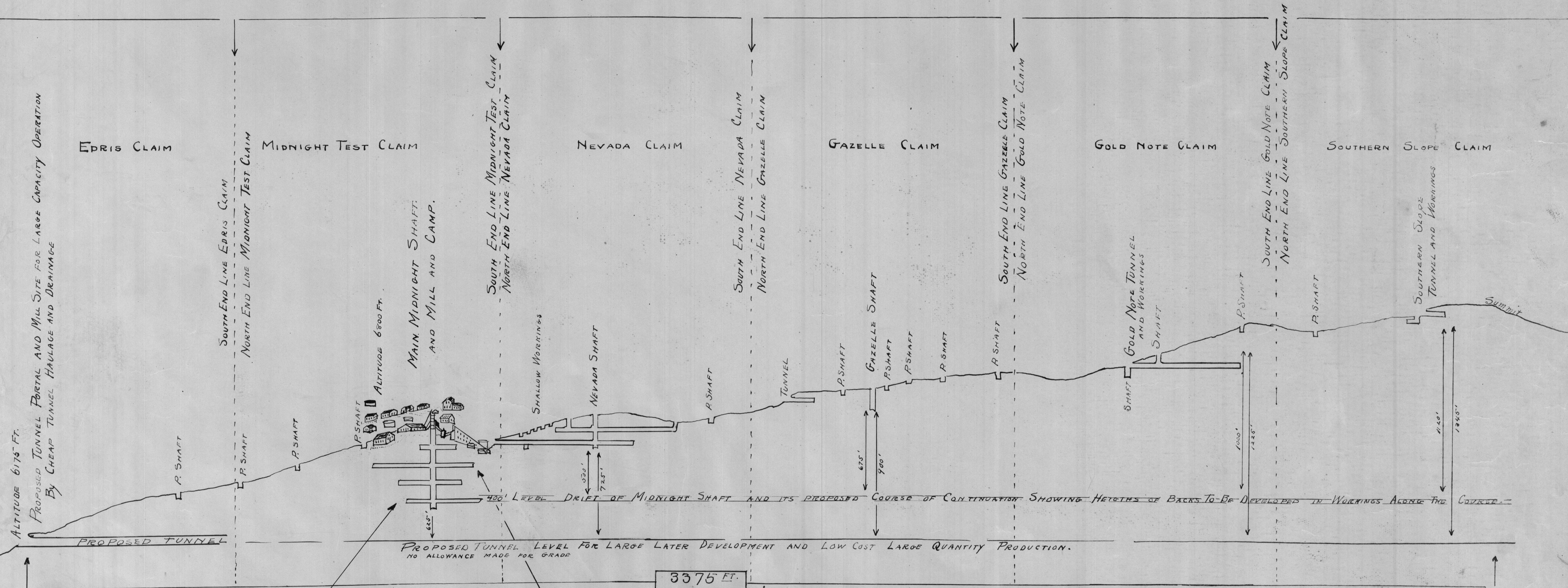


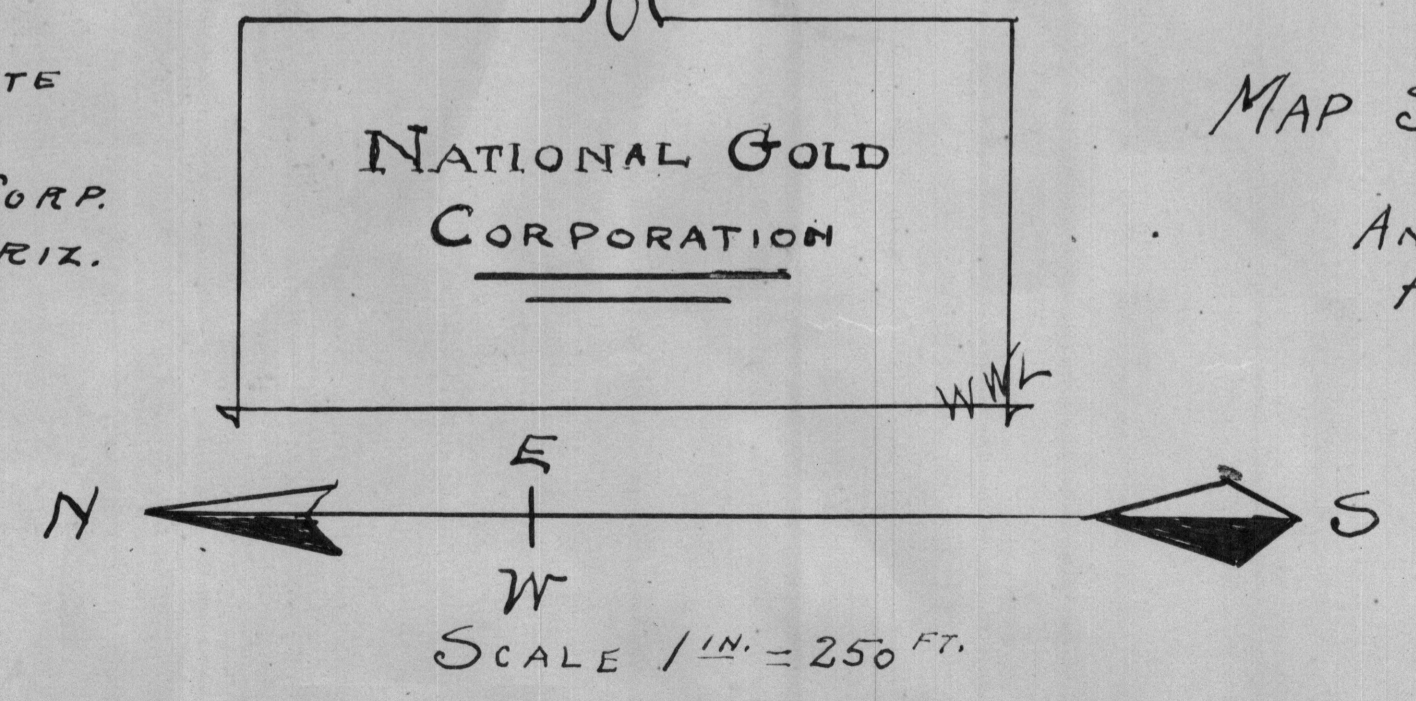
CONTOUR OF AND DEVELOPMENT ON MIDNIGHT TEST VEIN FOR DISTANCE OF 8375 FT.



MAIN MIDNIGHT WORKINGS OF NATIONAL GOLD CORP.

MILL AND TOWN SITE OF NATIONAL GOLD CORP. YAVAPAI CO., ARIZ.

3375 FT.



MAP SHOWING MAIN WORKING SHAFT, MILL, AND CAMP OF NATIONAL GOLD CORP AND CONTIGUOUS DEVELOPMENT ALONG 8375 FT. OF THE MIDNIGHT TEST VEIN, PROPOSED TUNNEL DEVELOPMENT FOR FUTURE LARGE TONNAGE OPERATION, HEIGHTS OF ORE BAGS, ALONG PROPOSED DEVELOPMENT, GIVING AN IDEA OF THE PERSISTENCE AND CONTINUITY OF VEINS AND THE MAGNITUDE OF OPERATION TO BE EXPECTED. PROPERTY LOCATED HASSAYAMPA AND WALKER MINING DIST. 9 MILES S.E. OF PRESCOTT, YAVAPAI CO. ARIZONA. DRAWN SEP. 15, 1932 BY W.W. LINESBA.