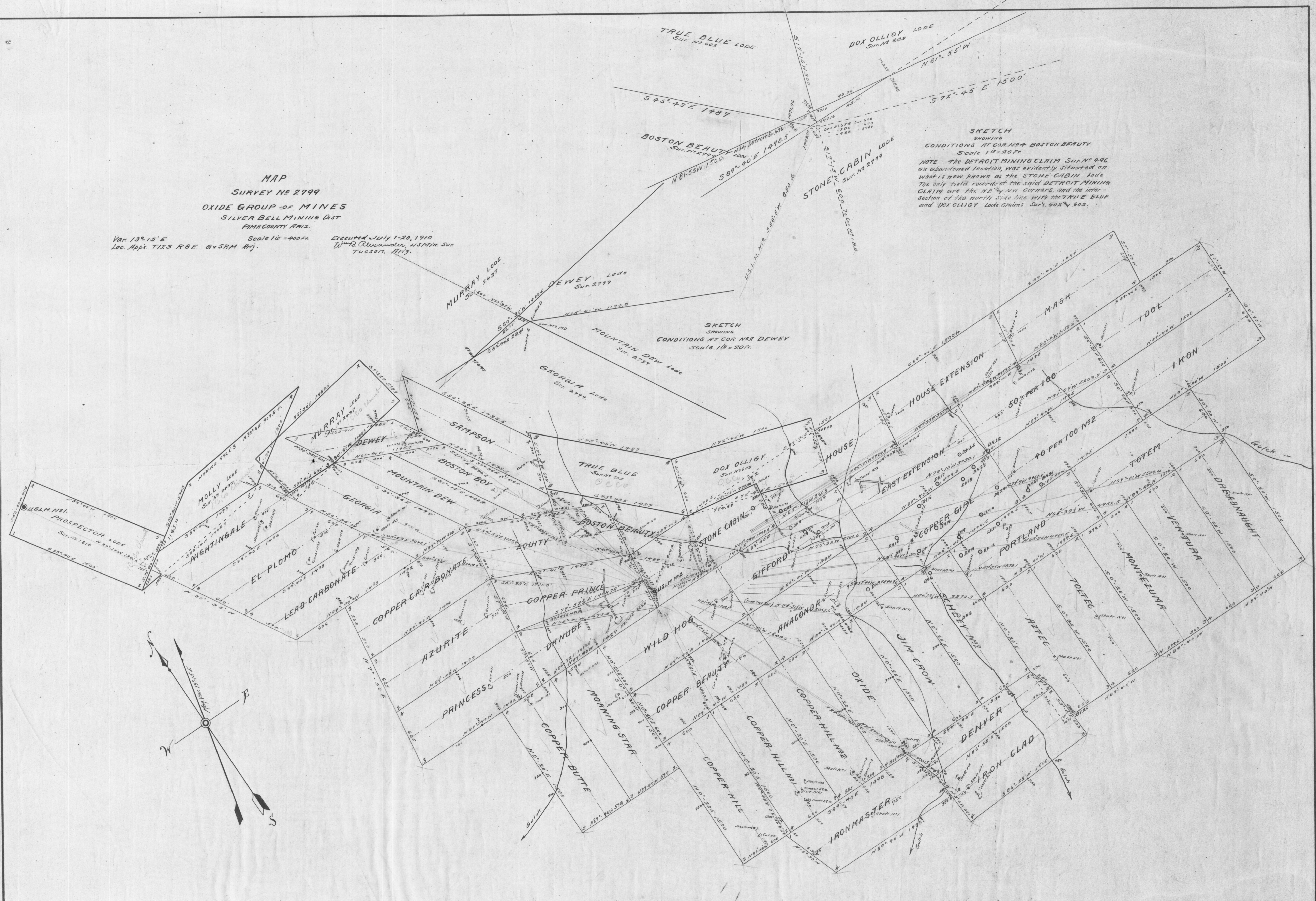


MAP
 SURVEY No 2799
 OXIDE GROUP OF MINES
 SILVER BELL MINING DIST
 PIMA COUNTY ARIZ.

Var 13° 15' E
 Loc. Appx T125 R8E G+SRM Ariz.
 Scale 1" = 400 FT.

Executed July 1-20, 1910
 Wm R. Alexander, U.S.M.M. SUR.
 TUCSON, ARIZ.



SKETCH
 SHOWING
 CONDITIONS AT COR. No 4 BOSTON BEAUTY
 Scale 1" = 20 FT.
 NOTE THE DETROIT MINING CLAIM SUR. No 996
 an abandoned location, was evidently situated on
 what is now known as the STONE CABIN Lode.
 The only field records of the said DETROIT MINING
 CLAIM are the NE 1/4 corner, and the inter-
 section of the north side line with the TRUE BLUE
 and DOX OLLIGY Lode Claims SUR. No 602 & 603.

SKETCH
 SHOWING
 CONDITIONS AT COR. No 2 DEWEY
 Scale 1" = 20 FT.