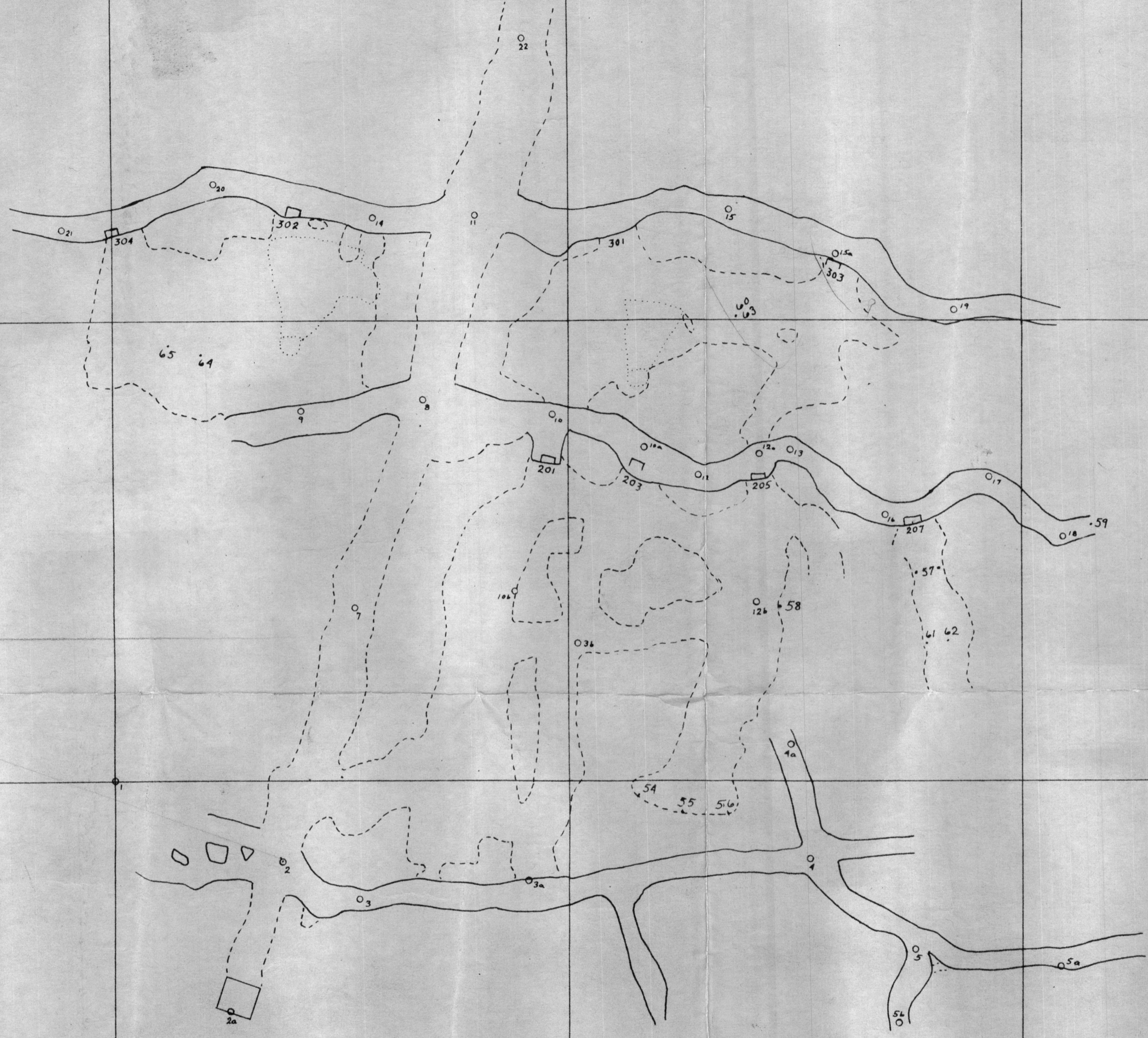


| Spic. No. | % Pb | % Zn | Width |
|-----------|------|------|-------|
| 54 | 3.9 | 42 | |
| 55 | 9.3 | 60 | |
| 56 | 14.4 | 54 | |
| 57 | 17.0 | | |
| 58 | 4.3 | | |
| 59 | 1.4 | 52 | |
| 60 | 8.9 | 37 | |
| 61 | 5.5 | 40 | |
| 62 | 5.6 | 60 | |
| 63 | 15.1 | 46 | |
| 64 | 13.7 | 34 | |
| 65 | 12.3 | 54 | |

*Claim Line
Temporary*

N+16°W



*MAIN STOPING AREA
Head Center mine*

ATHLETIC MINING CO.
 ARAVAIPA, ARIZONA
HEAD CENTER MINE
 SAMPLE MAP
 SCALE 1" = 20'
 APR 25 1947