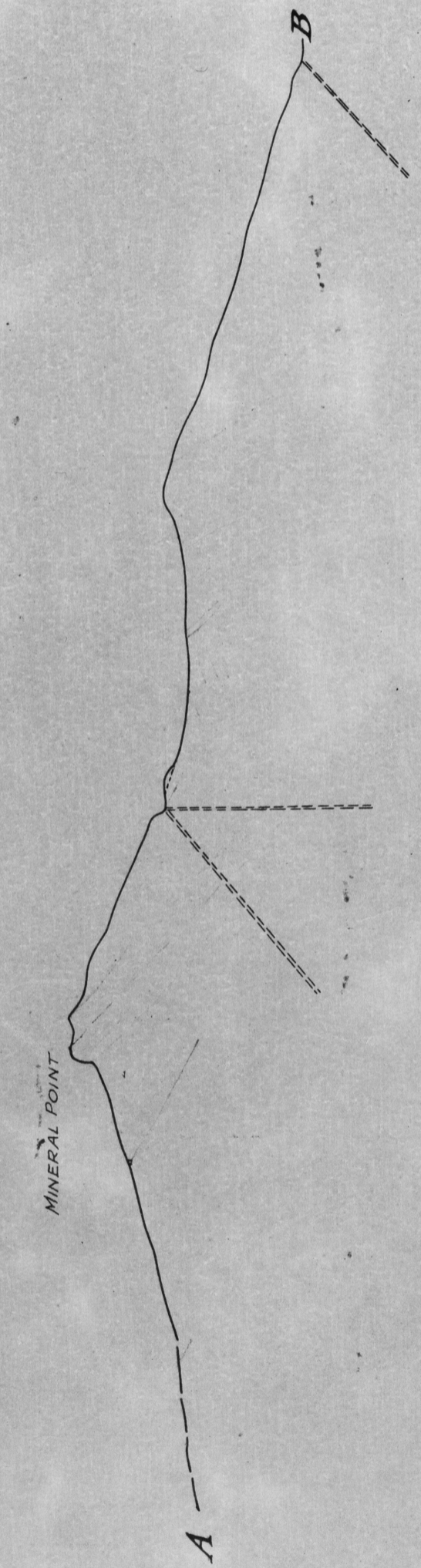


**VERTICAL SECTION**  
*Through Mineral Point*  
**LOOKING WEST**  
*Scale: 1 in. = 300 ft.*

Projection of Proposed Drill Holes



# Vicinity of MINERAL POINT

## SHOWING SURFACE GEOLOGY

*Ruby, Arizona.*

SCALE: 1 in. = 300 ft.

Paul R. Murphy

August, 1934

### Legend

Veins or Mineralization	Diorite-Dark (Oldest)
Fissures and Faults	Rhyolite and Andesite
Diorite (most recent) Fine Grained Bluish Intrusive	Shale and Shaly Limestone
Diorite-Light (Coarse Grained Olive and Pink) Same Window Age.	Location of Proposed Diamond Drill Holes
Diorite Breccia or Conglomerate	Arroyo

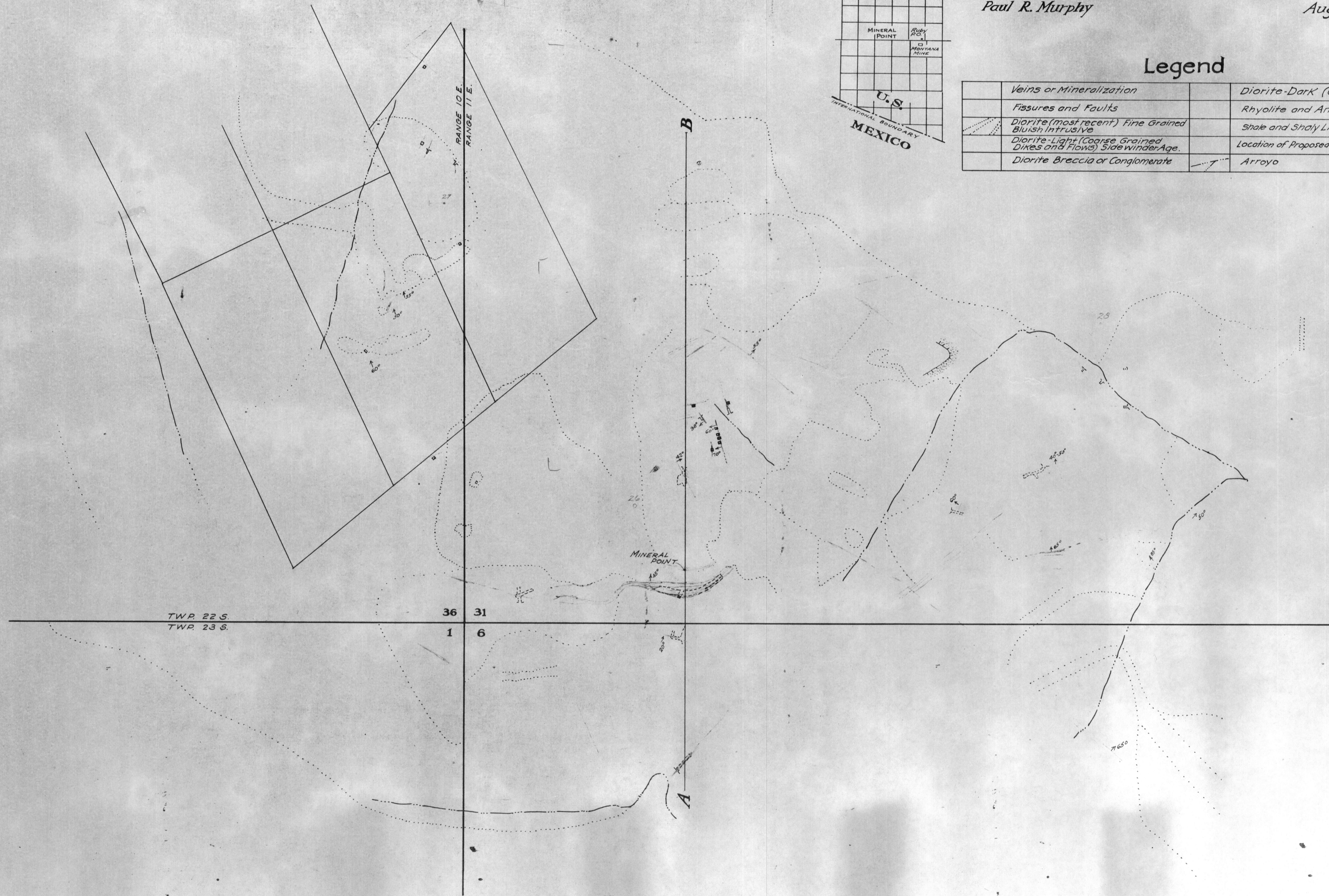
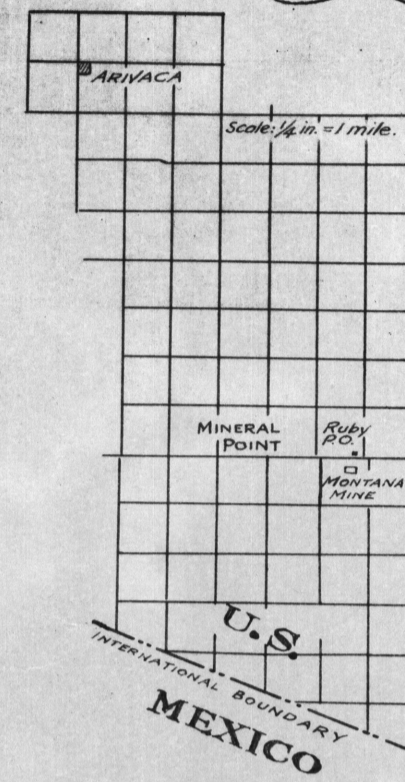


Fig. 4

G. M. FOWLER  
 JOHNSON NO.