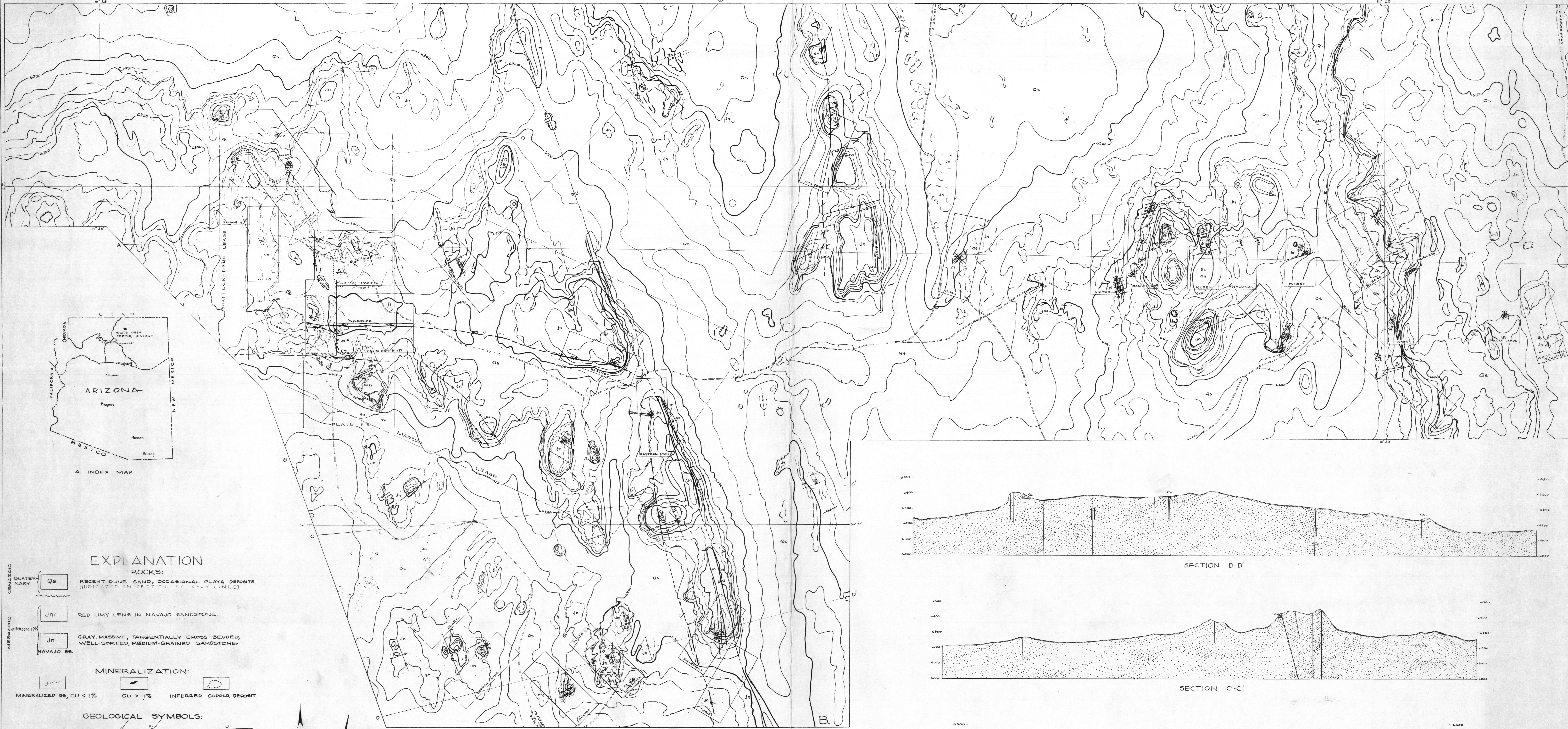


SECTION A-A'



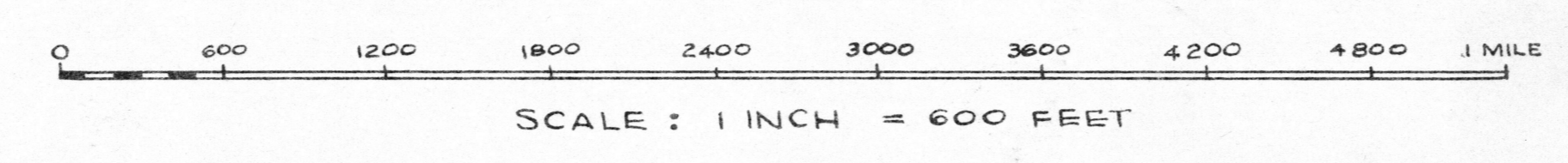
EXPLANATION

- ROCKS:**
- Qs RECENT DUNE SAND, OCCASIONAL PLAYA DEPOSITS (INDICATED IN SECTION BY DASHY LINES)
 - Jnr RED LIMY LENS IN NAVAJO SANDSTONE
 - Jn GRAY, MASSIVE, TANGENTIALLY CROSS-BEDDED, WELL-SORTED, MEDIUM-GRAINED SANDSTONE, NAVAJO SS.
- MINERALIZATION:**
- MINERALIZED 99, CU < 1%
 - CU > 1%
 - INFERRED COPPER DEPOSIT
- GEOLOGICAL SYMBOLS:**
- CONTACTS
 - VERTICAL MAJOR JOINT FISSURES
 - DIP SLIP
 - FAULT FISSURES
- WORKINGS:**
- ABANDONED PROSPECT WITH ORE SHOWING
 - ABANDONED PROSPECT WITHOUT ORE
 - OPEN CUTS
 - ADIT
- CULTURE:**
- CLAIMS: UNPATENTED, APPROXIMATE POSITION, PATENTED
 - MINING OR PROSPECTING LEASE
 - BOUNDARY OF DETAILED AREAS
- OTHER SYMBOLS:**
- SECONDARY ROAD
 - BUILDING
 - TRIANGULATION POINT
 - U.S.L.M.

UNITED STATES DEPARTMENT OF THE INTERIOR, GEOLOGICAL SURVEY

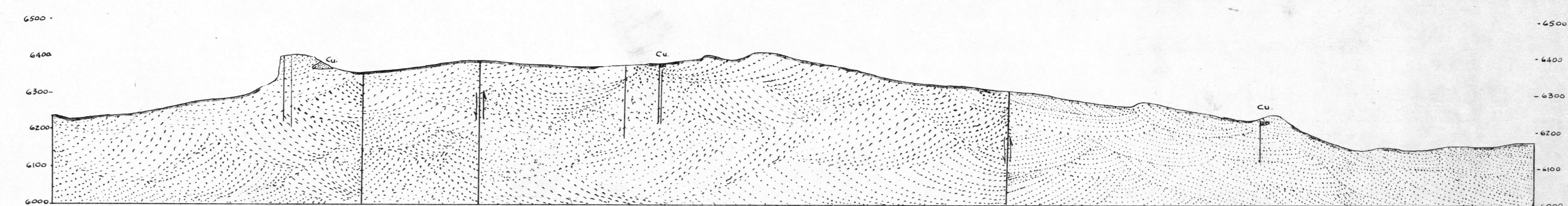
GEOLOGY and TOPOGRAPHY of the WHITE MESA COPPER DISTRICT COCONINO COUNTY, ARIZONA

BY C. B. READ, R. D. SAMPLE, & H. H. SULLWOLD, JR.

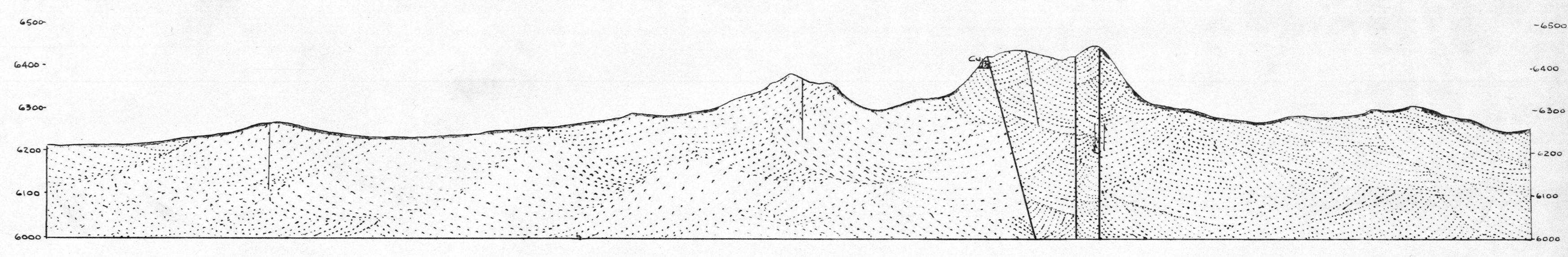


CONTOUR INTERVAL 20 FEET DATUM APPROXIMATELY MEAN SEA LEVEL

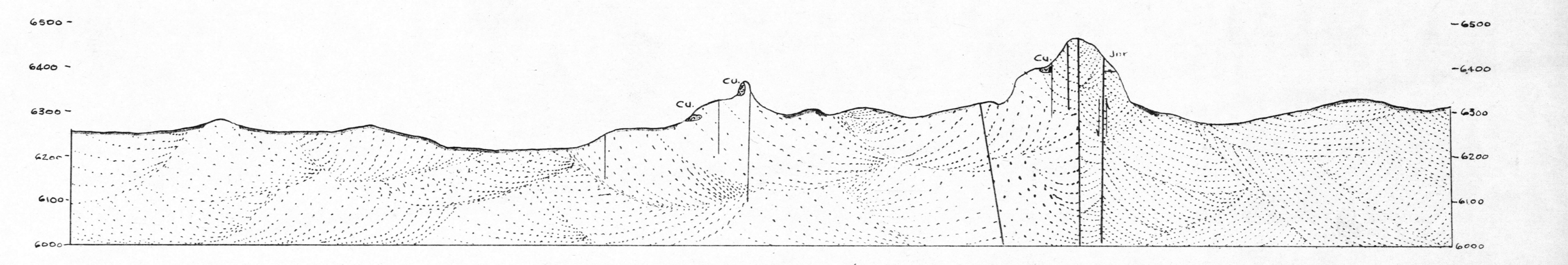
1943



SECTION B-B'



SECTION C-C'



SECTION D-D' GEOLOGIC SECTIONS HORIZONTAL SCALE SAME AS MAP, VERTICAL SCALE AS A