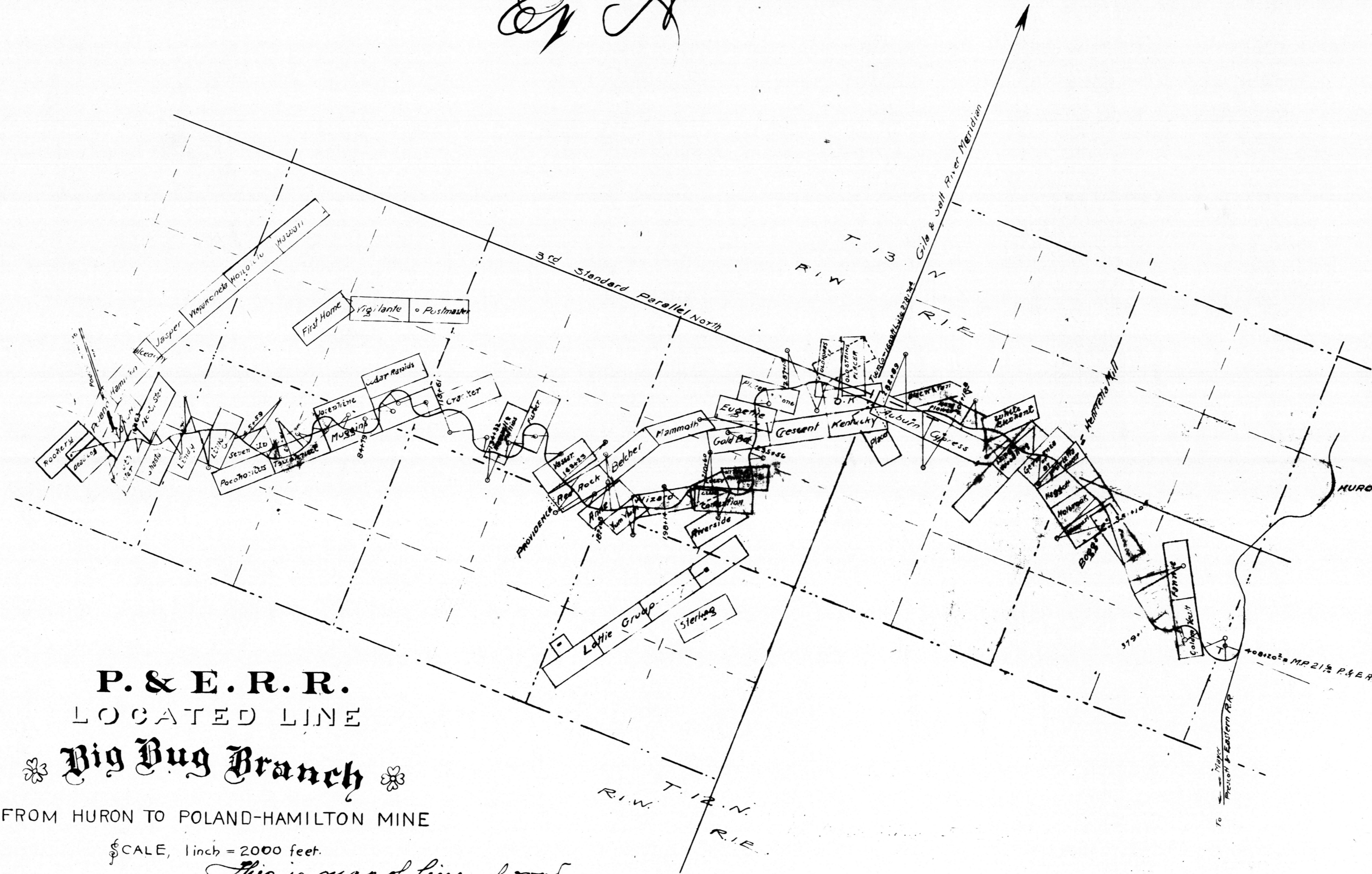


*E. J.*



**P. & E. R. R.**  
 LOCATED LINE  
 ❀ **Big Bug Branch** ❀  
 FROM HURON TO POLAND-HAMILTON MINE

SCALE, 1 inch = 2000 feet.

*This is map of line of road  
 locally called the Traskew Mountains  
 Railroad and referred to in the  
 accompanying affidavits  
 W. A. D. D. P.  
 June 6-1902*