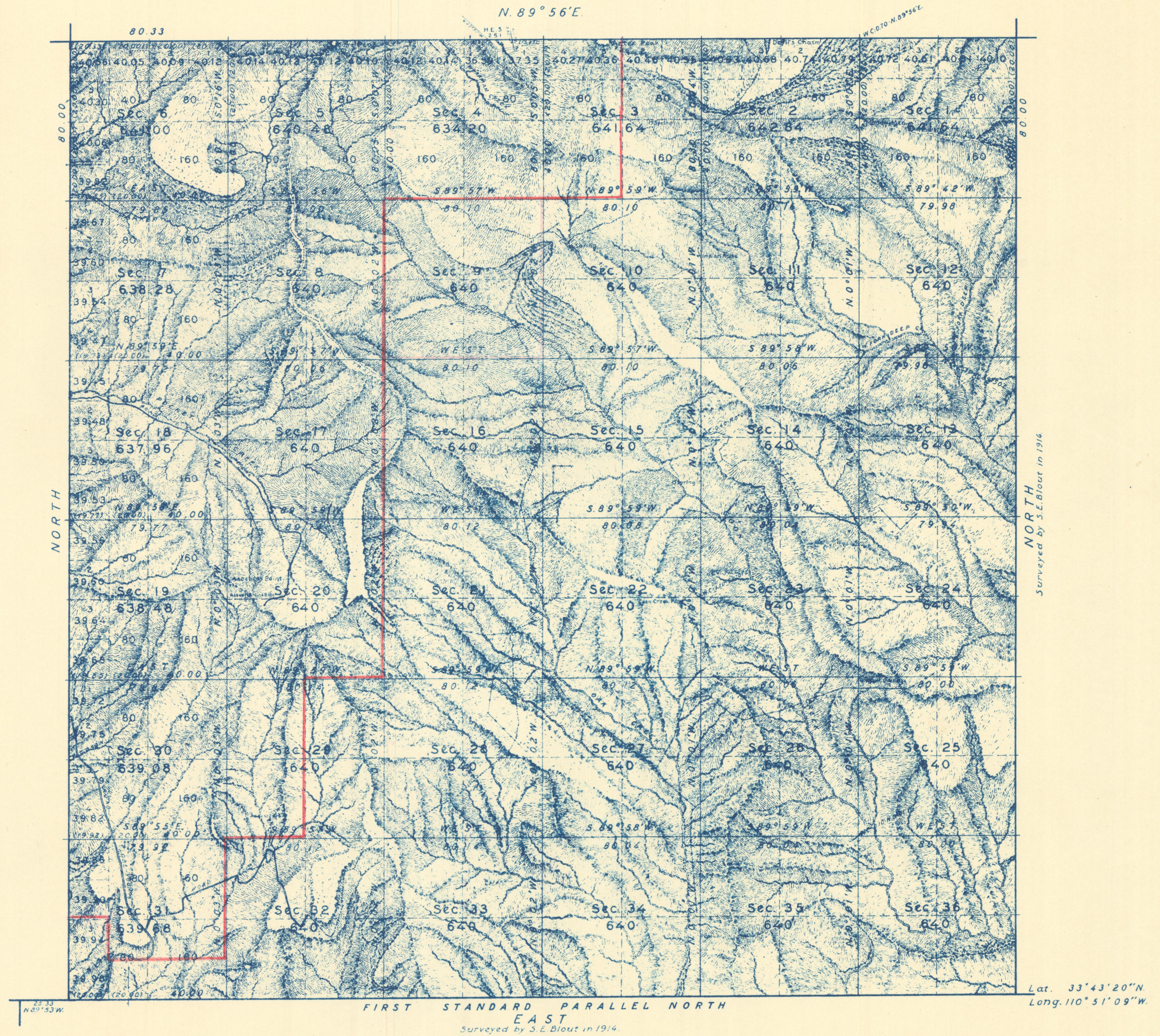


TOWNSHIP N° 5 NORTH, RANGE N° 14 EAST, GILA AND SALT RIVER MERIDIAN, ARIZONA.



Mean Magnetic Variation 14° 24' E. Scale: 40 Chains to an inch. Area Surveyed 23035.28 Acres

LINES DESIGNATED	BY WHOM SURVEYED	GROUP		MILEAGE		WHEN SURVEYED	
		No.	DATE	MILES	CHAINS	BEGUN	COMPLETED
Exterior Subdivisional Miscellaneous	Ty White N.E. Shearer Frank Kennon	223	Apr. 28, 1938	12	0.33	May 24, 1938	Jul. 8, 1938
				60	1.77		
					14.02		

Office of Supervisor of Surveys
Denver, Colorado, Feb. 1, 1940

The above plat of Township No. 5 North, Range No. 14 East, Gila and Salt River Meridian, Arizona, is strictly conformable to the field notes of the survey thereof which have been examined and approved.

Wm. H. Johnson
Supervisor of Surveys.

DEPARTMENT OF THE INTERIOR
GENERAL LAND OFFICE

Washington, D.C., Mar. 4, 1940
The survey represented by this plat having been correctly executed in accordance with the requirements of law and the regulations of this office is hereby accepted.

Earl David Wolford
Acting Assistant Commissioner

mb