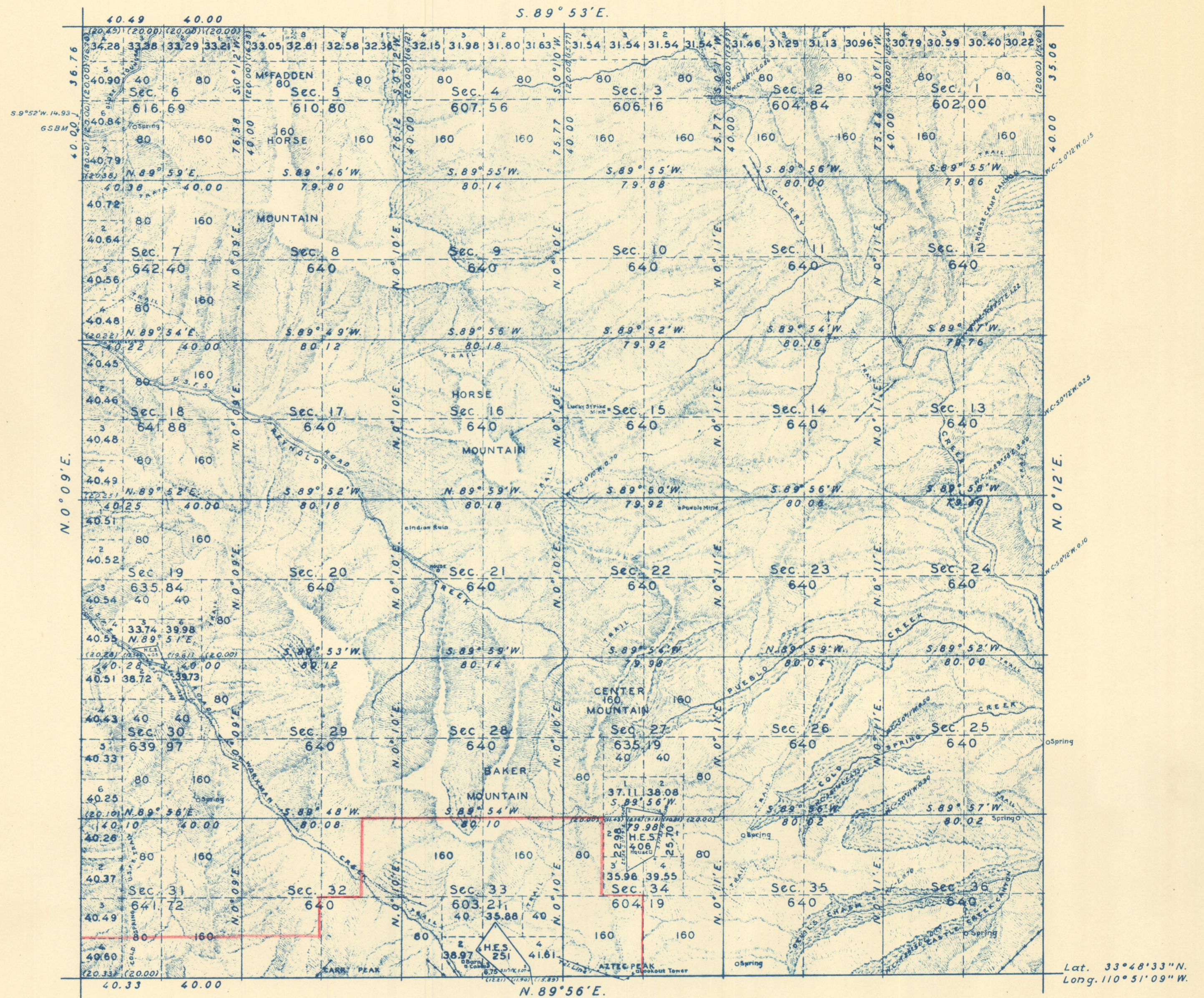


TOWNSHIP N° 6 NORTH, RANGE N° 14 EAST, GILA AND SALT RIVER MERIDIAN, ARIZONA.



Mean Magnetic
Variation 14° 26' E. Scale: 40 Chains to an inch.

Area of segregations ... 85.24 Acres
Area surveyed ... 22,772.45
Total ... 22,857.69

Office of Supervisor of Surveys

Denver, Colorado, April 5, 1940.

The above plat of Township No. 6 North, Range No. 14 East, Gila and Salt River Meridian, Arizona, is strictly conformable to the field notes of the survey thereof which have been examined and approved.

Dwight Johnson

Supervisor of Surveys.

DEPARTMENT OF THE INTERIOR
GENERAL LAND OFFICE

Washington, D.C., April 7, 1941.

The survey represented by this plat having been correctly executed in accordance with the requirements of law and the regulations of this office is hereby accepted.

Joel David Wolfson

Assistant Commissioner.

LINES DESIGNATED	BY WHOM SURVEYED	GROUP		MILEAGE		WHEN SURVEYED	
		No.	DATE	MILES	CHAINS	BEGUN	COMPLETED
Exterior Subdivisional Miscellaneous	Ty White N.E. Shearer Frank Kennon	223	Apr. 28, 1938	23	72.64	Jun. 12, 1938	Jul. 2, 1938
				59	61.35	Jul. 8.	Aug. 15.
					50.96		