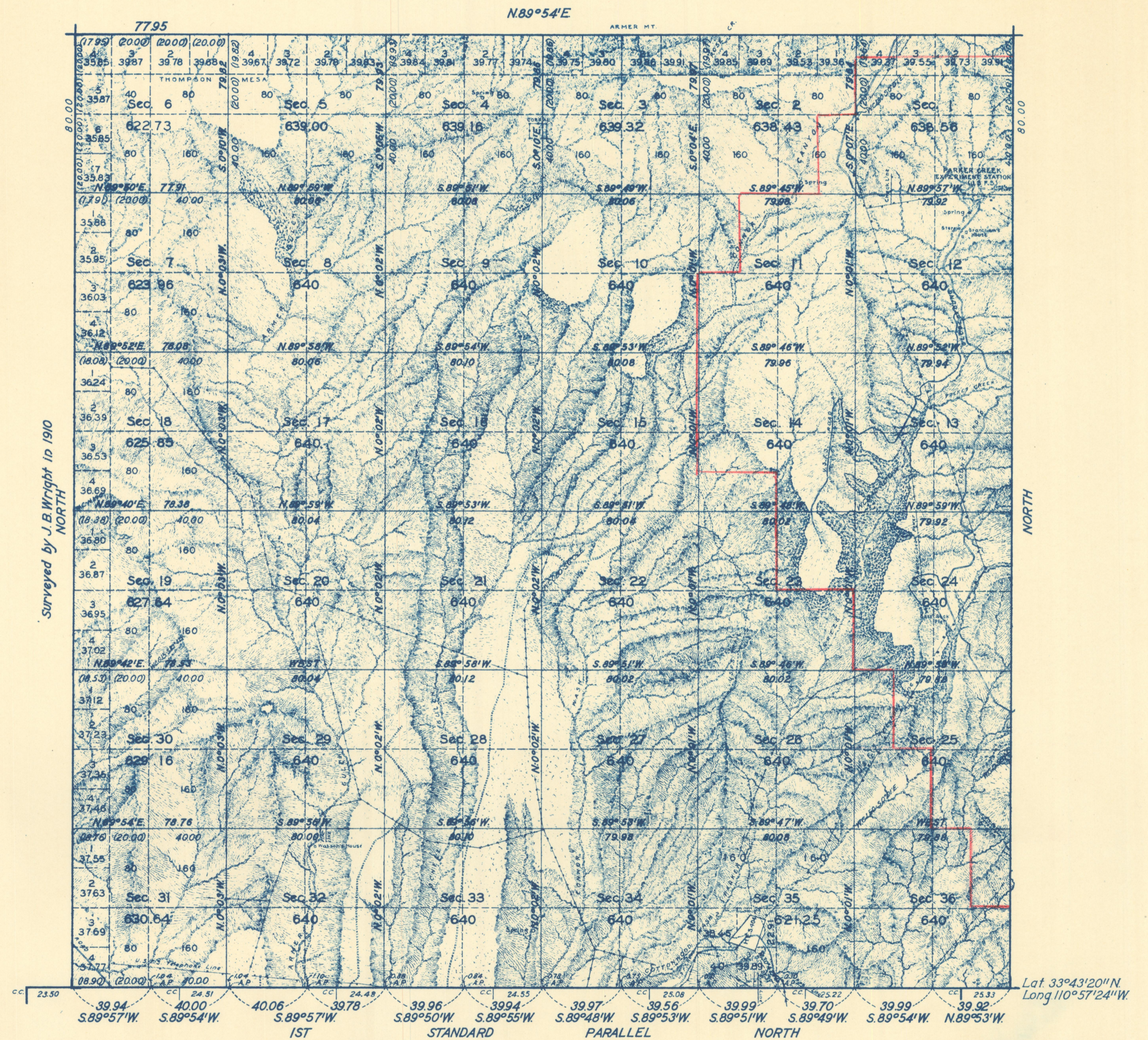


TOWNSHIP N^o 5 NORTH, RANGE N^o 13 EAST, GILA AND SALT RIVER MERIDIAN, ARIZONA.



Surveyed by J.B. Wright in 1910

Mean Magnetic
Variation 14°25'E.

Scale: 40 Chains to an Inch

Area Surveyed
22,935.70 Acres

Office of Supervisor of Surveys,
Denver, Colorado, Feb. 1, 1940

The above plat of Township N^o 5 North, Range N^o 13 East, Gila and Salt River Meridian, Arizona, is strictly conformable to the field notes of the survey thereof which have been examined and approved.

Wm. P. Johnson
Supervisor of Surveys

DEPARTMENT OF THE INTERIOR,
GENERAL LAND OFFICE
Washington, D.C., March 4, 1940

The survey represented by this plat, having been correctly executed in accordance with the requirements of law and the regulations of this office, is hereby accepted.

Joel Wainwright
Acting Assistant Commissioner

LINES DESIGNATED	BY WHOM SURVEYED	GROUP		MILEAGE		WHEN SURVEYED	
		NO.	DATE	MILES	CHAINS	BEGUN	COMPLETED
Exterior	Ty White	223	April 28, 1938	17	76.76	May 24, 1938	Oct 29, 1938
Subdivisional	Norville E. Shearer Frank Kennon			59	71.38	Oct. 19, "	Nov. 8, "
Miscellaneous					21.31		