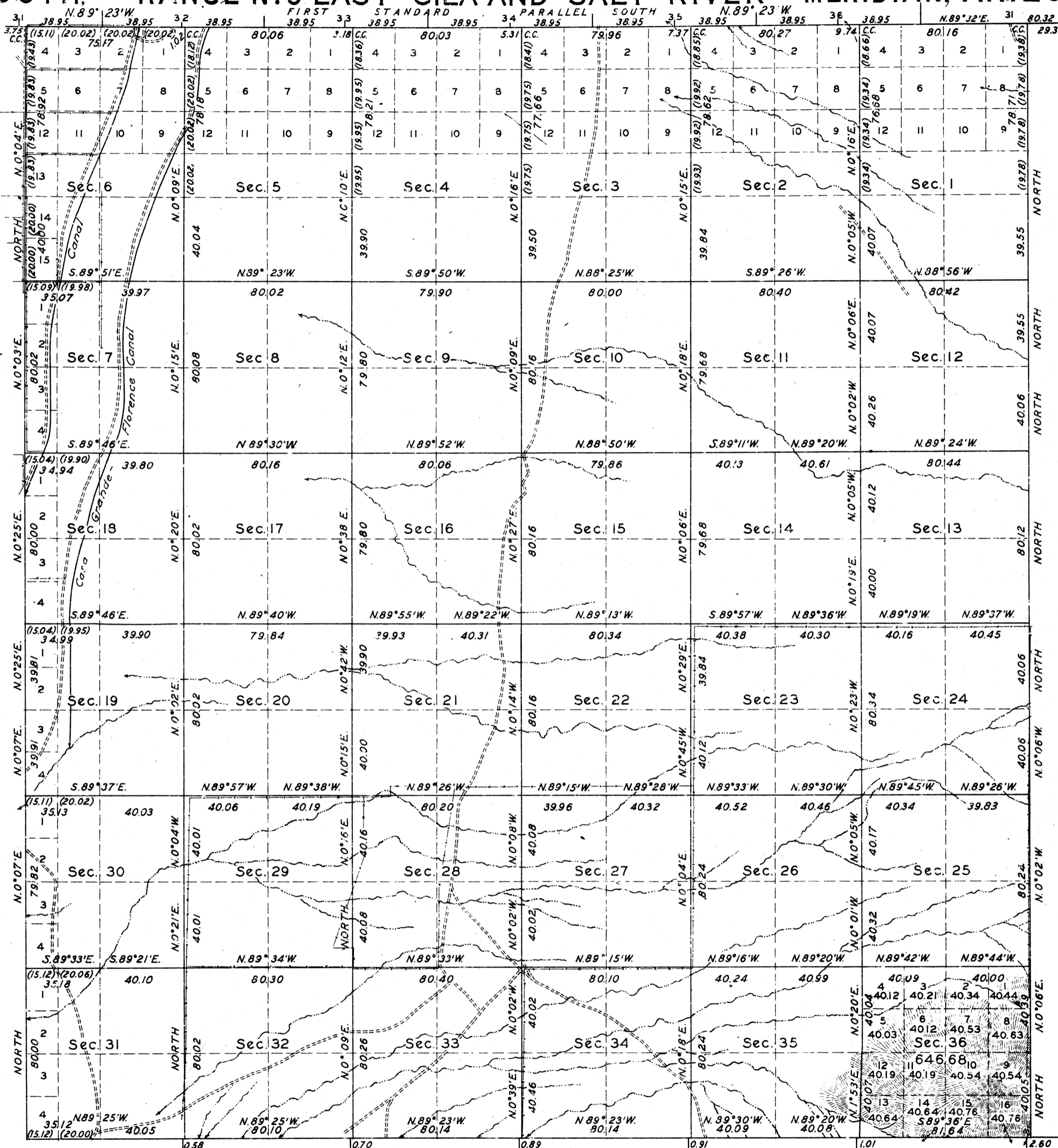


TOWNSHIP N^o6 SOUTH, RANGE N^o9 EAST GILA AND SALT RIVER MERIDIAN, ARIZONA.

DEPENDENT RESURVEY

This plat of the resurvey of T.6S.,R.9E., delineates a retracement and reestablishment of the lines of the original survey as shown upon the plat approved May 26, 1892, in their true original position according to the best available evidence of the position of the original corners; all differences between the measurements shown on the original plat and those derived in the retracement have been distributed proportionally between accepted corners in accordance with surveying rules; reference will be made to the original plat for the showing of the areas and more detailed descriptions of the various smaller subdivisions of the sections shown hereon. Section 36 having been shown on the original plat of this township as unsurveyed, the subdivision of said section into numbered lots with their various areas is shown hereon, and governs the disposal of the land within said section.



Mean Magnetic Declination, 14° 15' E.

Scale: 40 Chains to an Inch.

Area Surveyed, 6 46 68 Acres

LINES DESIGNATED	BY WHOM SURVEYED	No	GROUP DATE	MILEAGE		WHEN SURVEYED	
				MLS.	CHS.	BEGUN	COMPLETED
Exterior	Dupree R. Averill	150	Jan. 5, 1928	18	72.92	Feb. 20, 1928	Apr. 24, 1928
Subdivisional	Roger F. Wilson and Otis O. Gould		Feb. 18, 1928	62	13.67	Apr. 25, 1928	May 3, 1928
Meander			Mar. 24, 1928				
Miscellaneous							

D.M.B.P.

Office of U.S. Supervisor of Surveys
 Denver, Colorado, July 15, 1929.
 The above plat of Township No. 6 South, Range No. 9 East, of the Gila and Salt River Meridian, Arizona, is strictly conformable to the field notes of the survey thereof which have been examined and approved.

Wm. H. Linn
 U.S. Supervisor of Surveys.

DEPARTMENT OF THE INTERIOR
 GENERAL LAND OFFICE

Washington, D. C., September 26, 1929.
 The survey represented by this plat having been correctly executed in accordance with the requirements of law and the regulations of this office, is hereby accepted.

Wm. C. Havell
 Assistant Commissioner