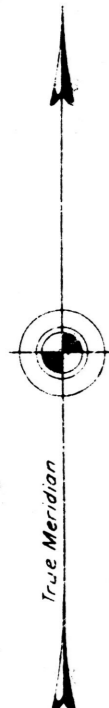
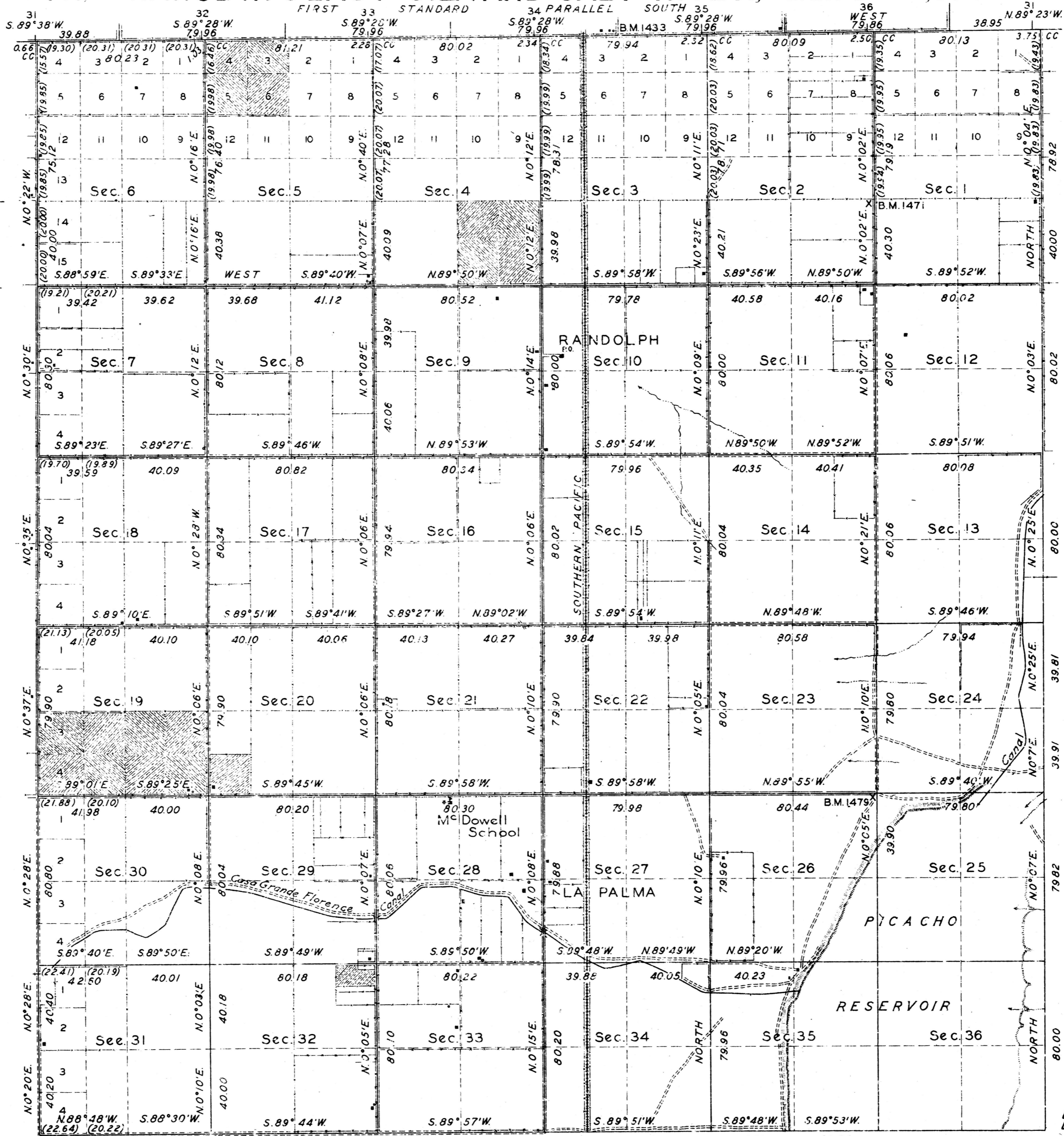


TOWNSHIP Nº 6 SOUTH. RANGE Nº 8 EAST GILA AND SALT RIVER, MERIDIAN, ARIZONA.

DEPENDENT RESURVEY

This plat of the resurvey of T. 6 S. R. 8 E. delineates a retracement and reestablishment of the lines of the original survey as shown upon the plat approved November 25, 1889, in their true original position according to the best available evidence of the position of the original corners; all differences between the measurements shown on the original plat and those derived in the retracement have been distributed proportionally between accepted corners in accordance with surveying rules; reference will be made to the original plat for the showing of the areas and more detailed description of the various smaller subdivisions of the sections shown hereon.



Scale: 40 Chains to an Inch.
Mean Magnetic Declination, 14° 18' E.

Office of U.S. Supervisor of Surveys
Denver, Colorado, July 15, 1929.
The above plat of Township No. 6 South, Range No. 8 East, of the Gila and Salt River Meridian, Arizona is strictly conformable to the field notes of the survey thereof which have been examined and approved.

DEPARTMENT OF THE INTERIOR
GENERAL LAND OFFICE
Washington, D. C., September 24, 1929.
The survey represented by this plat having been correctly executed in accordance with the requirements of law and the regulations of this office, is hereby accepted.

Wm. H. Johnson
U.S. Supervisor of Surveys.

Wm. C. Starnell
Assistant Commissioner.

LINES DESIGNATED	BY WHOM SURVEYED	No	GROUP DATE	MILEAGE		WHEN SURVEYED	
				MLS	CHS	BEGUN	COMPLETED
Exterior	Dupree R. Averill	150	Jan. 5, 1928.	25	0.67	Feb 3, 1928	Mar. 22, 1928
Subdivisional	Roger F. Wilson and Otis O. Gould		Feb. 18, 1928	62	4.18	Mar. 15, 1928	Mar. 22, 1928
Meander							
Miscellaneous							