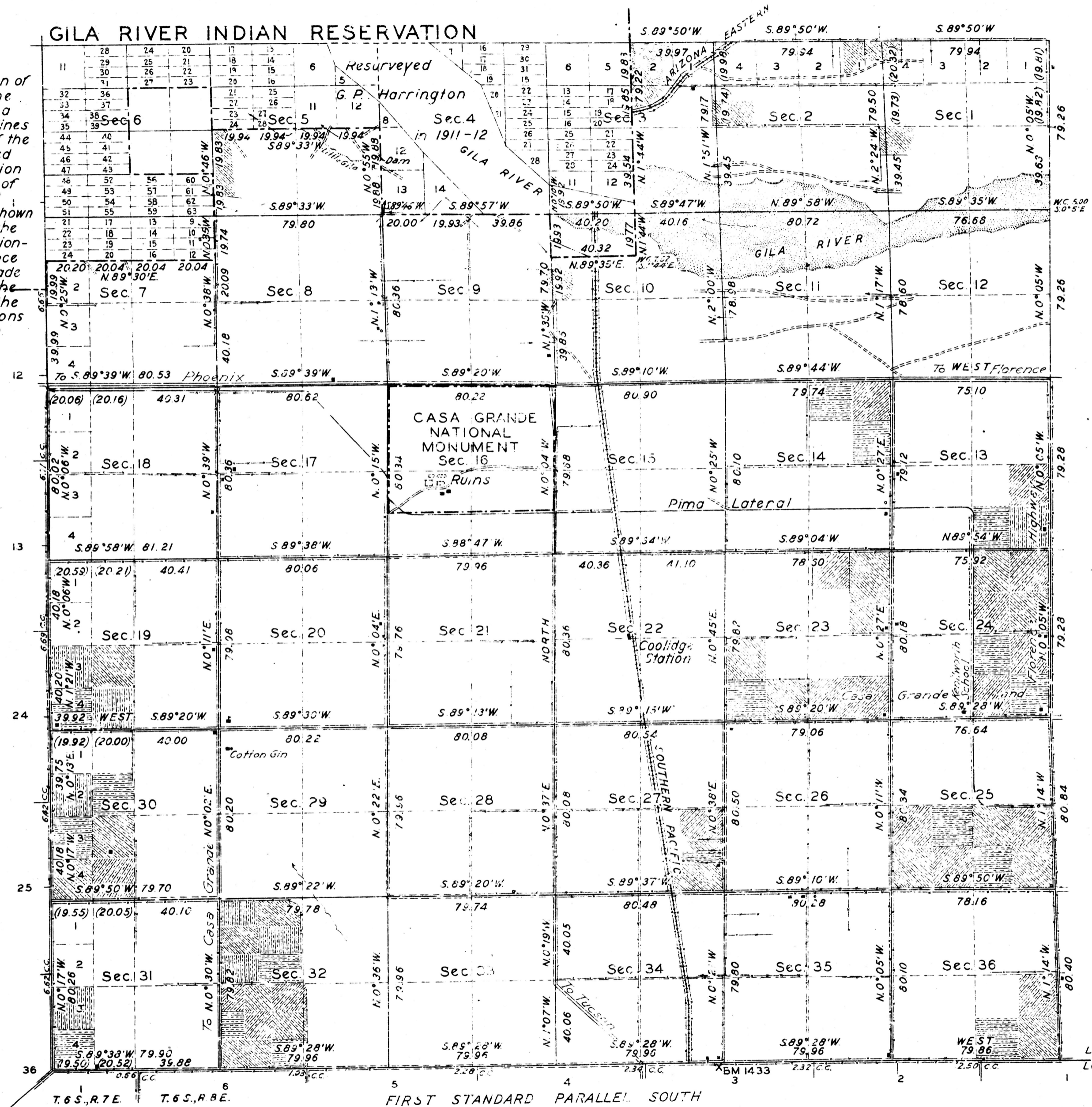


TOWNSHIP N^o 5 SOUTH, RANGE N^o 8 EAST GILA AND SALT RIVER MERIDIAN, ARIZONA.

DEPENDENT RESURVEY OF PORTION OUTSIDE GILA RIVER INDIAN RESERVATION

This plat of the resurvey of that portion of Township 5 South, Range 8 East, outside the Gila River Indian Reservation delineates a retracement and reestablishment of the lines of the original survey of such portion of the Township as shown upon the plat approved October 5, 1869, in their true original position according to the best available evidence of the position of the original corners; all differences between the measurements shown on the original plat and those derived in the retracement have been distributed proportionally between accepted corners in accordance with surveying rules; reference will be made to said original plat for the showing of the areas and more detailed descriptions of the various smaller subdivisions of the sections outside the Gila River Indian Reservation.



Mean Magnetic Declination, 14° 18' E. Scale: 40 Chains to an Inch

LINES DESIGNATED BY WHOM SURVEYED	GROUP NO.	DATE	MILEAGE		WHEN SURVEYED	
			MLS	CHS	BEGUN	COMPLETED
Exterior	Dupree R. Averill	150 Jan. 5, 1928	19	18.34	Feb. 7, 1928	Feb. 18, 1928
Subdivisional	Roger F. Wilson		57	62.39	" " "	" " "
Meander	Otis O. Gould					
Miscellaneous						

D.M.B.P.

Office of U.S. Supervisor of Surveys
 Denver, Colorado, July 15, 1929.
 The above plat of Township No. 5 South, Range No. 8 East, of the Gila and Salt River Meridian, Arizona, is strictly conformable to the field notes of the survey thereof which have been examined and approved.

Wm. A. Johnson
 U.S. Supervisor of Surveys

DEPARTMENT OF THE INTERIOR
 GENERAL LAND OFFICE
 Washington, D.C., August 26, 1929.
 The survey represented by this plat having been correctly executed in accordance with the requirements of law and the regulations of this office, is hereby accepted.

J. C. David
 Acting Assistant Commissioner