

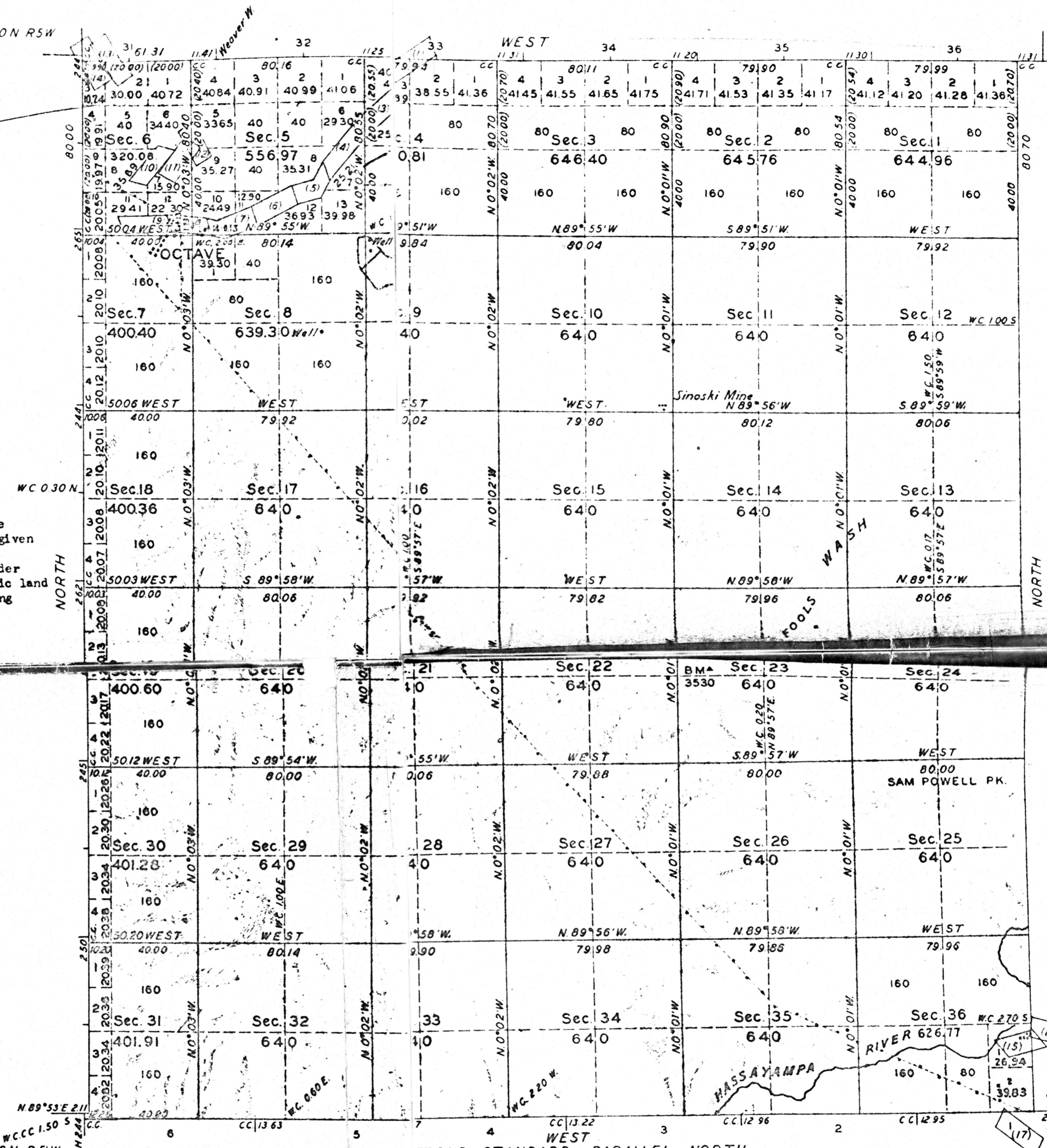
TOWNSHIP N° 9 NORTH, RANGE N° 4 WESGILA AND SALT RIVER MERIDIAN, ARIZONA.

2842

PATENTED MINING CLAIMS

No	SUR	NAME
1	1422	GOLDEN AGE
2	1424	VERNO
3	1424	THUNDERBOLT
4	1423	NEW ERA
5	1310	UNCLE SAM
6	1310	GOLDEN ROD
7	1248	ANTELOPE
8	1248	GREY DEVELL
9	1248	DUN BILLY
10	3853	COYOTE PLAGER
11	3853	NEW WEAVER PLAGER
12	3853	DA'SY No. 3
13	2200	CLINTON
14	2198	MAMIE
15	2000	BLACK WARRIOR
16	2000	LITTLE CHIEF
17	2719	SAN FRANCISCO

Note: To avoid crowding of data upon the face of the plat, the patented mining claims are given identifying numbers from 1 to 17, inclusive, the same being enclosed in parentheses in order that there may be no confusion with the public land lot designations. See table for corresponding names and survey numbers.



Mean Magnetic Variation 14° 55' E.

Scale: 40 Chains to an Inch

Area Surveyed 21,405.60 Acres.

LINES DESIGNATED	BY WHOM SURVEYED	GROUP No	DATE	MILEAGE MS. CHS	WHEN SURVEYED	
					BEGUN	COMPLETED
Exterior	Benj J Kinsey	155	Oct 3, 1928	17 34.27	Mar 5, 1929	May 3, 1929
Subdivisional				58 12.90	29,	4,
Miscellaneous				6 2273	27,	Feb. 26,

DMBP

SECOND STANDARD PARALLEL NORTH

Office of U.S. Supervisor of Surveys  
Denver Colorado, Jan 30, 1931.  
above plat of Township No 9 North Range  
West, Gila and Salt River Meridian, Arizona  
is fully conformable to the field notes of the  
survey thereof which have been examined and  
approved

*Quantin Munson*  
U.S. Supervisor of Surveys

DEPARTMENT OF THE INTERIOR  
GENERAL LAND OFFICE  
Washington, DC, May 25, 1931

The survey represented by this plat having been correctly executed in accordance with the requirements of law and the regulations of this office, is hereby accepted

*Wm C Howell*  
Assistant Commissioner

Lat. 34° 04' 15" N  
Long. 112° 37' 18" W

