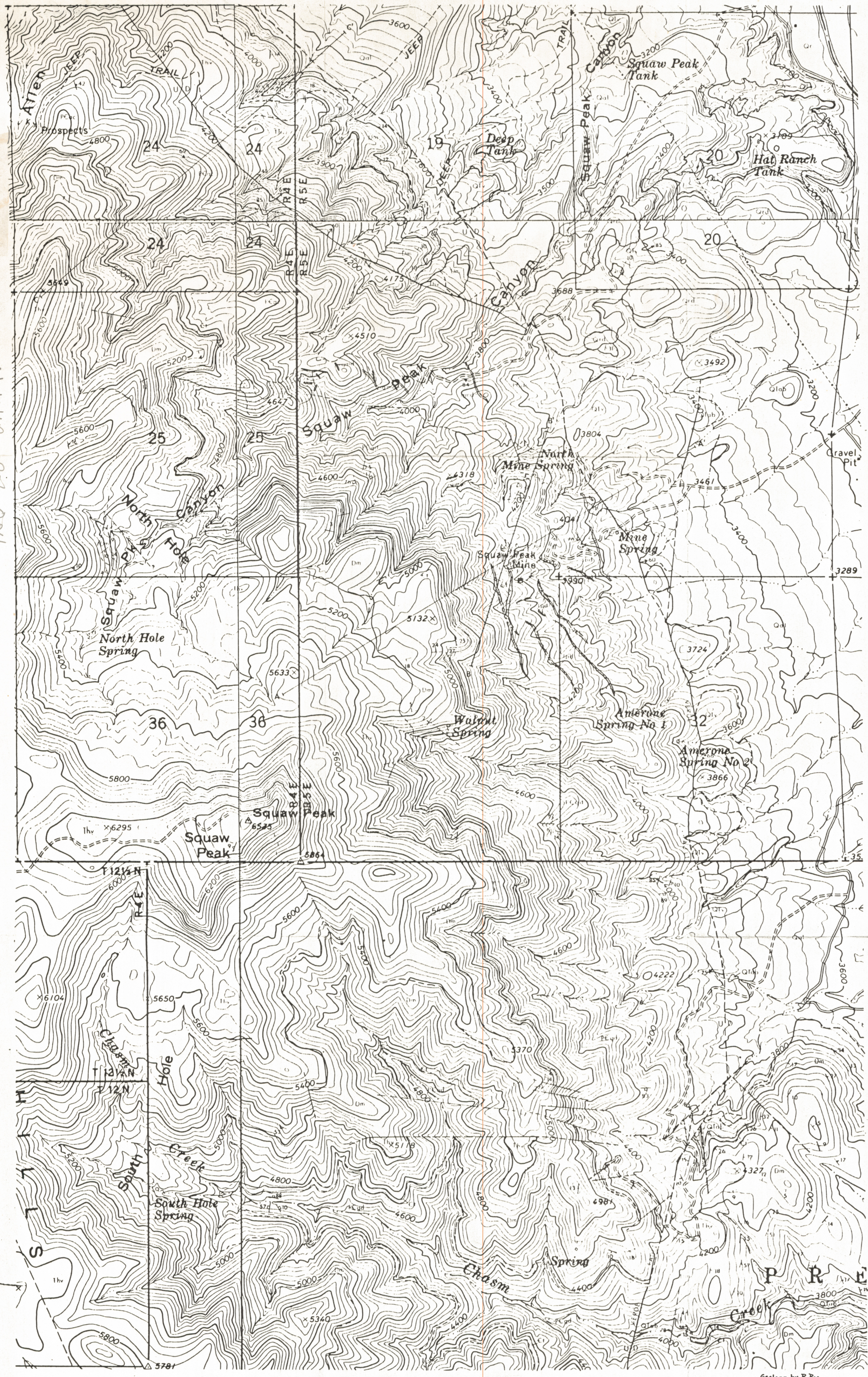


ASPMR 0306-004



EXPLANATION

Quaternary	Gr	River wash
	Qal	Alluvium
	Qud	Alluvium unconformity
	Qlv	Rhyolite flows
	Qlv	Rhyolite flows unconformity
	Qlv	Verde Formation
	Qlv	Verde Formation unconformity
	Qlv	Andesite and basal volcanic rocks
	Qlv	Andesite and basal volcanic rocks unconformity
	Tertiary	Thv
Thv		Trilby Formation above basal flows
Thv		Trilby Formation above basal flows unconformity
Thv		Quartz monzonite dikes
Thv		Aplite zone
Thv		Shear zone
Thv		Shear zone and shear unconformity
Thv		Late porphyry dikes
Thv		Granite dikes
Thv		Squaw Peak massive quartz monzonite
Middle and Upper Devonian	Em	Marble
	Em	Marble unconformity
	Em	Marble
	Em	Marble
	Em	Marble
	Em	Marble
	Em	Marble
	Em	Marble
	Em	Marble
	Em	Marble
Precambrian	PCgd	Granodiorite
	PCgd	Granodiorite unconformity
	PCgd	Granodiorite
	PCgd	Granodiorite
	PCgd	Granodiorite
	PCgd	Granodiorite
	PCgd	Granodiorite
	PCgd	Granodiorite
	PCgd	Granodiorite
	PCgd	Granodiorite

Geology by R. Roe, UA M.S. Thesis, 1976

Contact  
dashed where approximately located, dotted where concealed

Faults showing dip  
dashed where approximately located, dotted where concealed  
U, upthrown side; D, downthrown side

Minor fold  
showing strike and dip of axial plane and trend and plunge of axis

Strike and dip of beds

Strike and dip of foliation

Strike and dip of planar flow structure

Strike and dip of joints

Strike and dip of vertical joints

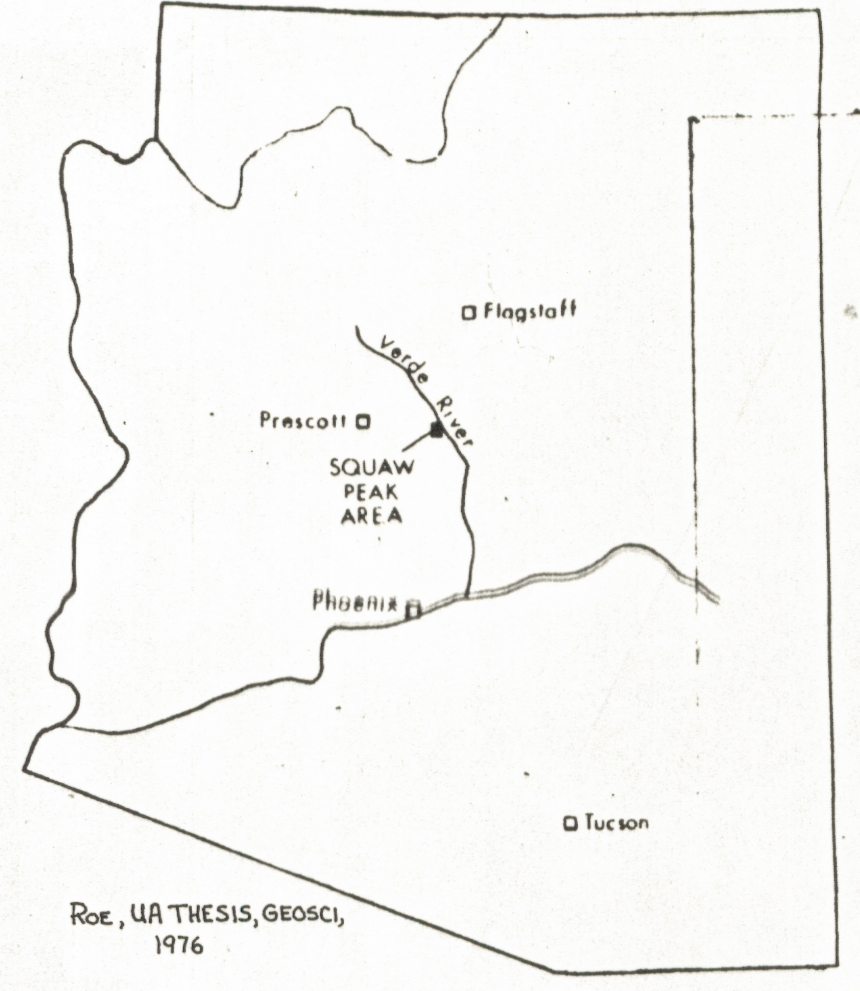
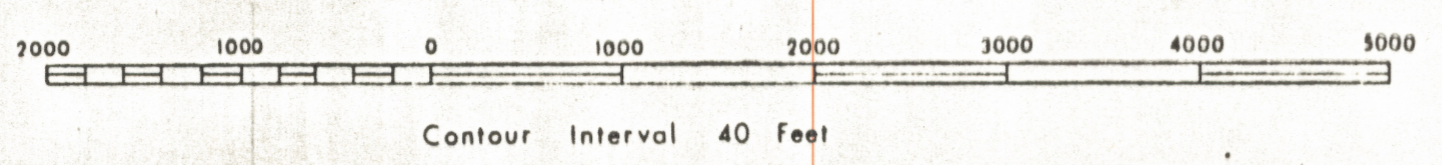
TRUE NORTH  
MAGNETIC NORTH

APPROXIMATE MEAN DECLINATION 1969

Figure 1

GEOLOGIC MAP OF THE SQUAW PEAK AREA  
YAVAPAI COUNTY, ARIZONA

SCALE 1:12000  
ONE INCH EQUALS ONE THOUSAND FEET



Roe, UA THESIS, GEOSCI, 1976