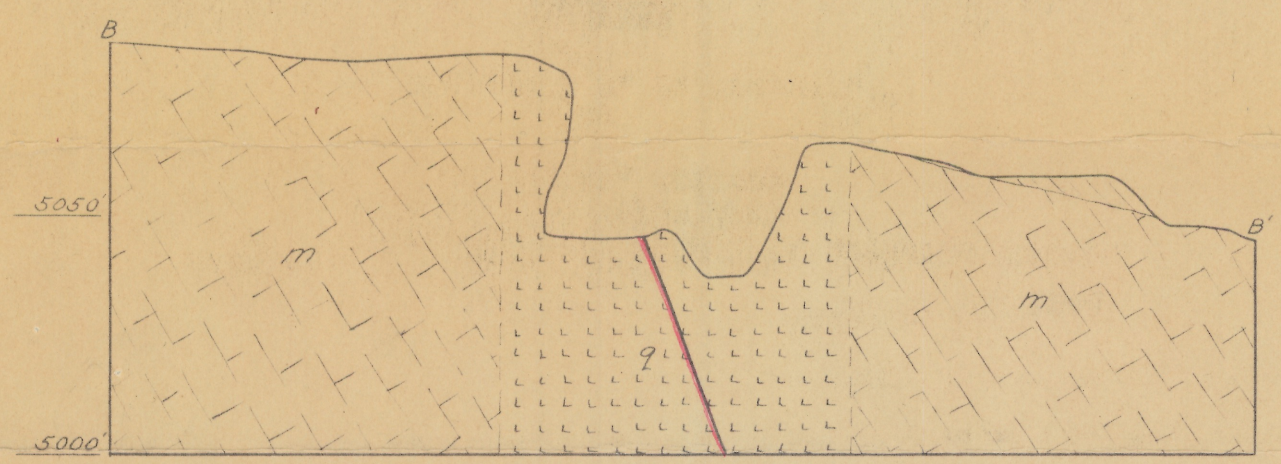


SECTION A - A'

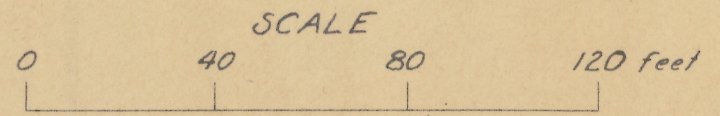


SECTION B - B'

MAUDINA TUNGSTEN MINE
AND
MORNING STAR MINE
PINAL COUNTY, ARIZONA

- al Alluvium
- WO₃ Mineralization
- Lg Quartz
- g Granite
- m Marble

U. S. GEOL. SURVEY
CONFIDENTIAL
 FOR USE OF
 U. S. GOVERNMENT
 ONLY



P. C. Bateman and M. P. Erickson
2-16-44