

ASSAY MAP

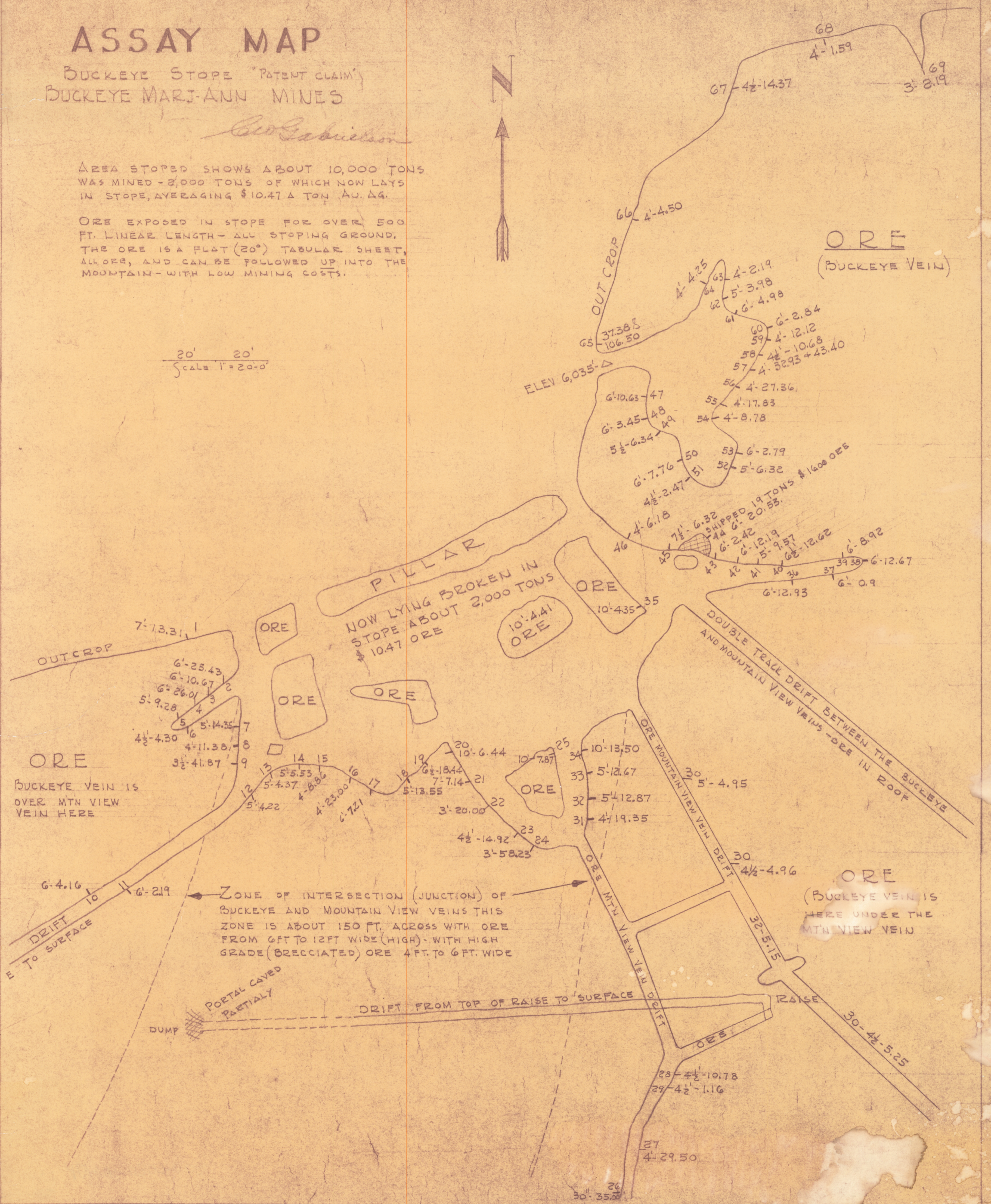
BUCKEYE STOPE "PATENT CLAIM"
BUCKEYE MARI-ANN MINES

Geo Gabrielson

AREA STOPED SHOWS ABOUT 10,000 TONS WAS MINED - 2,000 TONS OF WHICH NOW LAYS IN STOPE, AVERAGING \$10.47 A TON AU. AG.

ORE EXPOSED IN STOPE FOR OVER 500 FT. LINEAR LENGTH - ALL STOPING GROUND, THE ORE IS A FLAT (20°) TABULAR SHEET, ALL ORE, AND CAN BE FOLLOWED UP INTO THE MOUNTAIN - WITH LOW MINING COSTS.

20' 20'
Scale 1" = 20'-0"



BUCKEYE VEIN IS OVER MTN VIEW VEIN HERE

ZONE OF INTERSECTION (JUNCTION) OF BUCKEYE AND MOUNTAIN VIEW VEINS THIS ZONE IS ABOUT 150 FT. ACROSS WITH ORE FROM 6FT TO 12FT WIDE (HIGH) - WITH HIGH GRADE (BRECCIATED) ORE 4 FT. TO 6 FT. WIDE

ASMR 0307-002

ASSAY MAP
BUCKEYE STOPE
ASSAYS BY R.L. MOSE AND G...
BY C.W. GABRIELSON