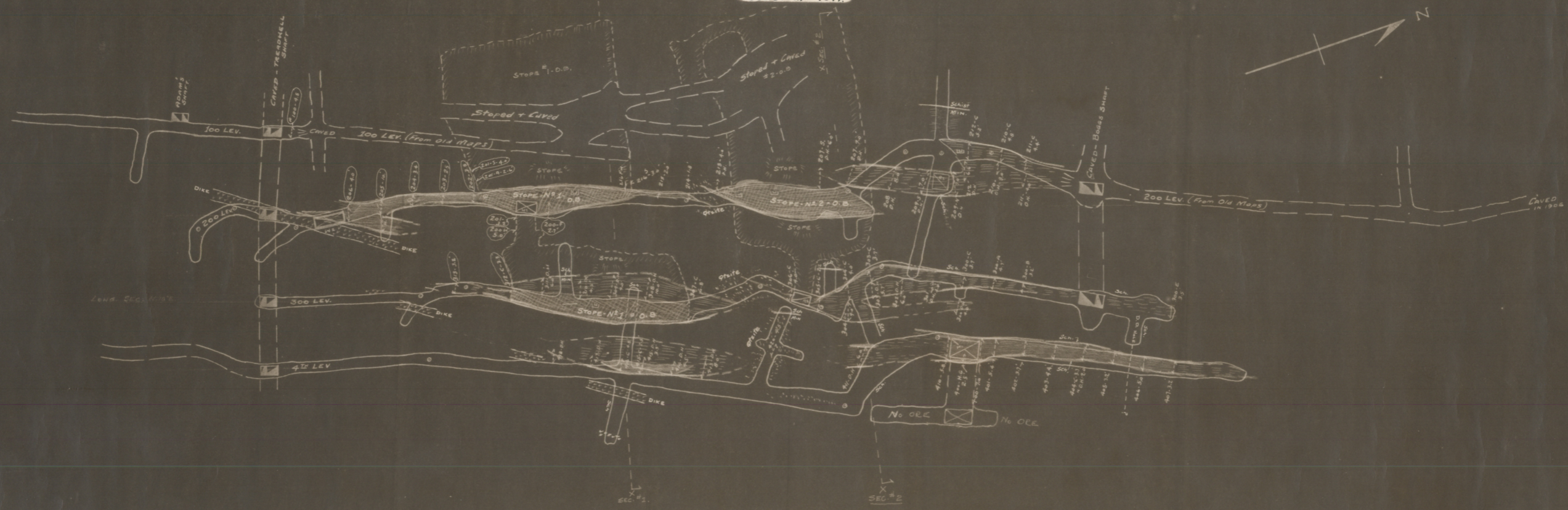


# BOGGS MINE

ASSAY - PLAN  
YAVAPAI COUNTY - ARIZ.  
Scale: 1 in = 40 ft.



■ - ORE  
■ - MINERALIZED AREA.  
BRUNTON SURVEY AND SAMPLING  
By L.L. FARNHAM.  
1" = 20'  
Nov. 1942 - L.L.F.

ADM MR 0305-001