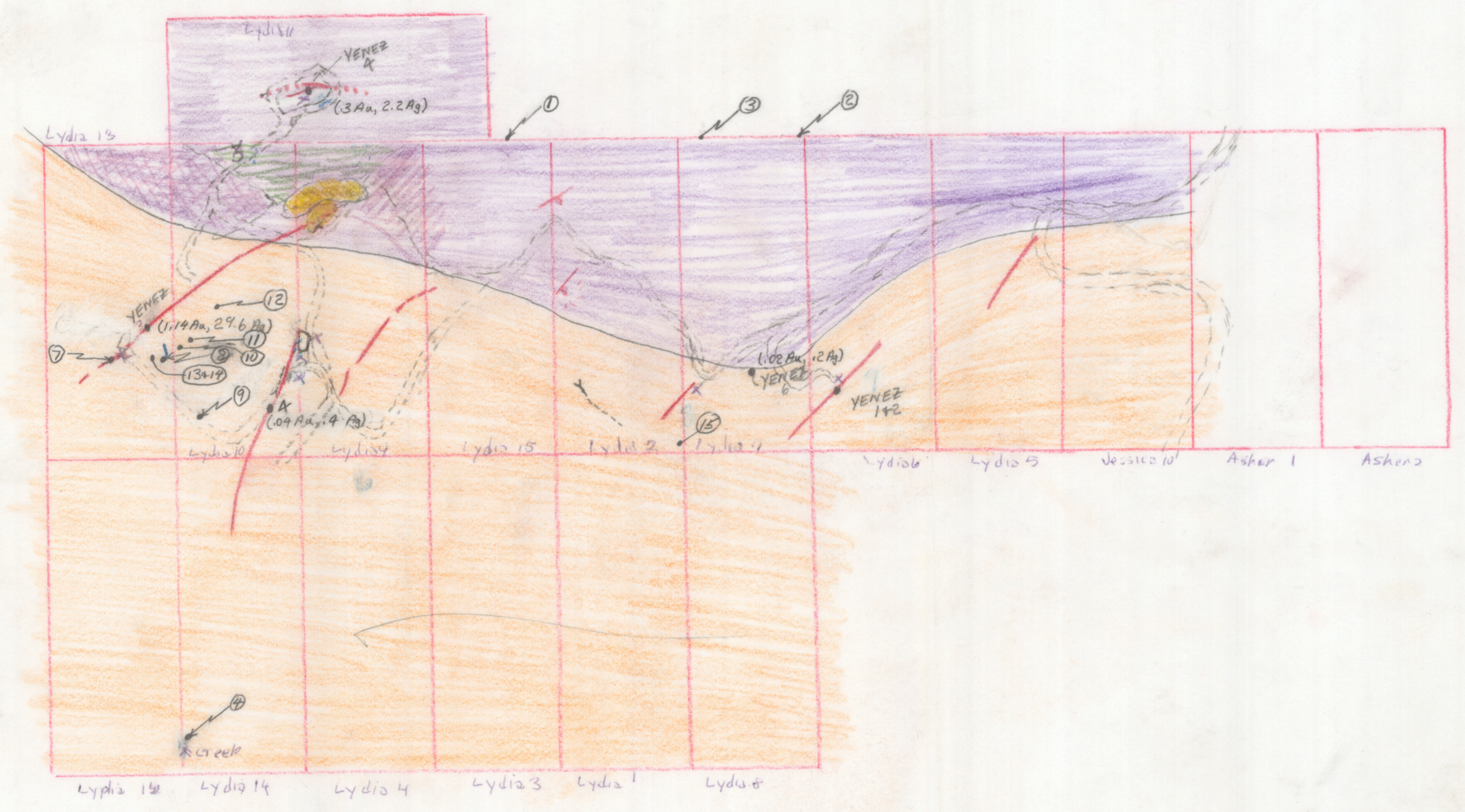


LAB #	ASSAYS	SAMP #	DATE	Au	Ag	Cu	U ₃ O ₈
18662	ARC	1	9-3-79	0.017	0.333	0.102	0.013
18663	ARC	2	9-3-79	0.005	1.53	0.656	0.026
18664	ARC	3	9-3-79	0.005	0.339	0.111	0.021
18665	ARC	4	9-3-79	0.179	1.32		
18666	ARC	5	9-3-79	0.015	0.538	(Loc. UNKNOWN)	0.017
18639	ARC	6	8-28-79	0.021	0.158	0.012	(Loc. UNKNOWN)
18644	ARC	7	8-28-79	0.029	1.14	0.013	0.013
18645	ARC	8	8-28-79	0.032	0.374	0.119	0.009
18646	ARC	9	8-28-79	0.005	0.064	0.058	<0.005
18647	ARC	10	8-28-79	0.05	2.12	0.015	0.010
18648	ARC	11	8-28-79	0.291	11.37	0.095	0.010
18649	ARC	12	8-28-79	0.089	0.716	0.145	0.006
	IK	13	9-25-79				
	IK	14	9-25-79				
	IK	15	9-25-79				



LYDIA GROUP
GILA COUNTY

- Yonez - Granite
- Yonez - schist
- Yonez - Mineralization Outcroppings
- Weathers - Granite
- Very high yield anomaly areas
- Modera Diorite

Key to known locations of Assays and Spectrographic of Lydia/Ashken Claims
C. Rogge

18649
ARC
13

688
COPY MADE (with 1979)
FABIA WILSON COPY FILE

ADMMR 0164-006