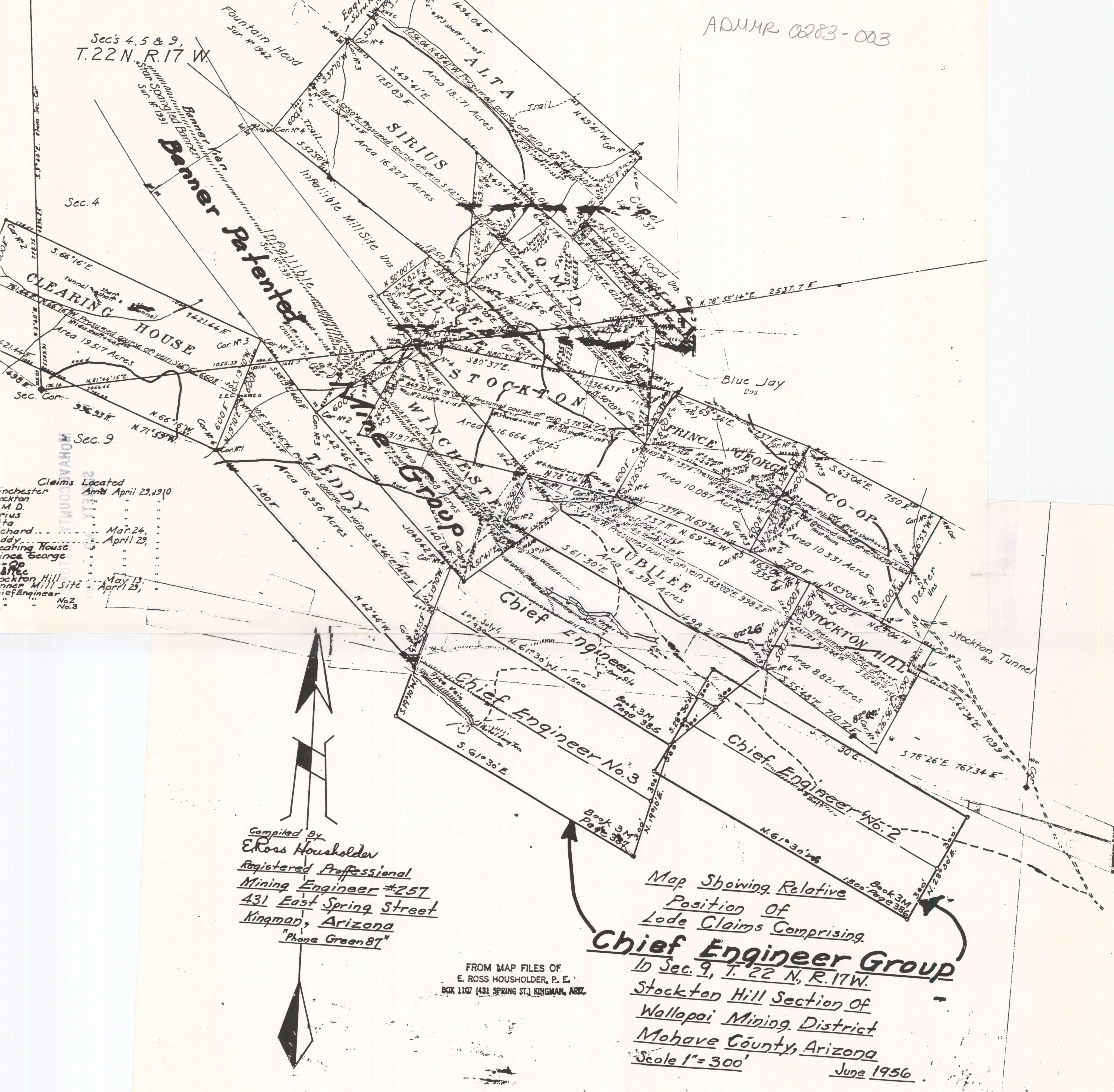


Secs 4, 5 & 9,
T.22 N. R.17 W.



Claims Located
 Winchester April 23, 1910
 Stockton M.D. April 29,
 Sirius May 24,
 Alta April 29,
 Clearing House
 Prince George May 13,
 Stockton Hill April 29,
 Banner Mill Site
 Chief Engineer
 No. 2
 No. 3

Compiled By
 E. Ross Housholder
 Registered Professional
 Mining Engineer #257
 431 East Spring Street
 Kingman, Arizona
 "Phone Green 87"

FROM MAP FILES OF
 E. ROSS HOUSHOLDER, P. E.
 BOX 1107 (431 SPRING ST.) KINGMAN, ARIZ.

Map Showing Relative
 Position of
 Lode Claims Comprising
Chief Engineer Group
 In Sec. 9, T. 22 N., R. 17 W.
 Stockton Hill Section of
 Wallapai Mining District
 Mohave County, Arizona
 Scale 1" = 300'
 June 1956