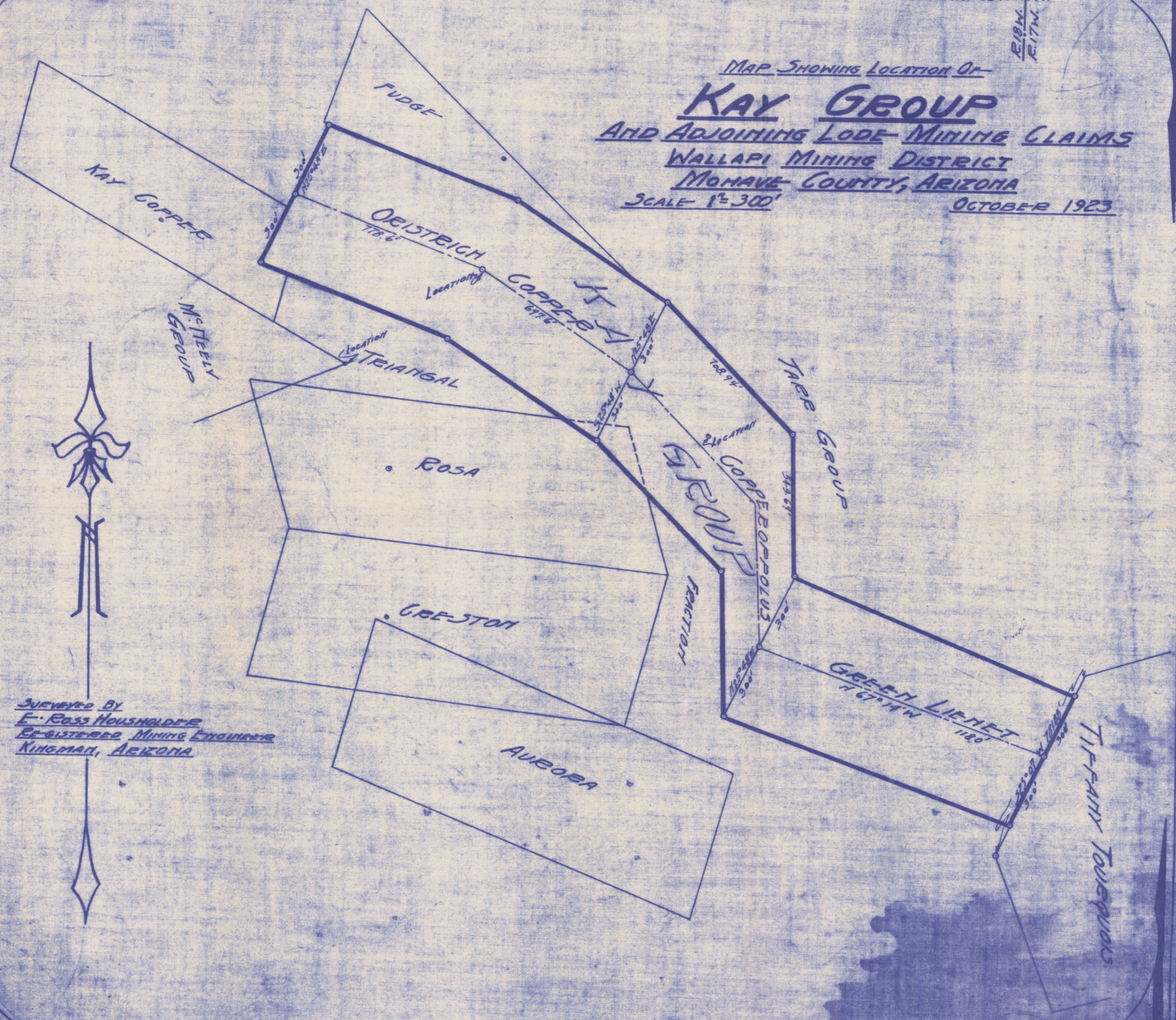


Arizona State Bar
No. 1000
Morrison County, Arizona

SEC. 13
SEC. 24 TOWNSHIP 23 NORTH

E. 1/4
E. 1/4

MAP SHOWING LOCATION OF
KAY GROUP
AND ADJOINING LOPE-MINING CLAIMS
WALLAPI MINING DISTRICT
MONAHVE COUNTY, ARIZONA
SCALE 1"=300'
OCTOBER 1923



SURVEYED BY
E. ROSS HOUSHOLDER
REGISTERED MINING ENGINEER
KINGMAN, ARIZONA

ADMR 2887-001

MONAHVE COUNTY HISTORICAL SOCIETY NO. 50