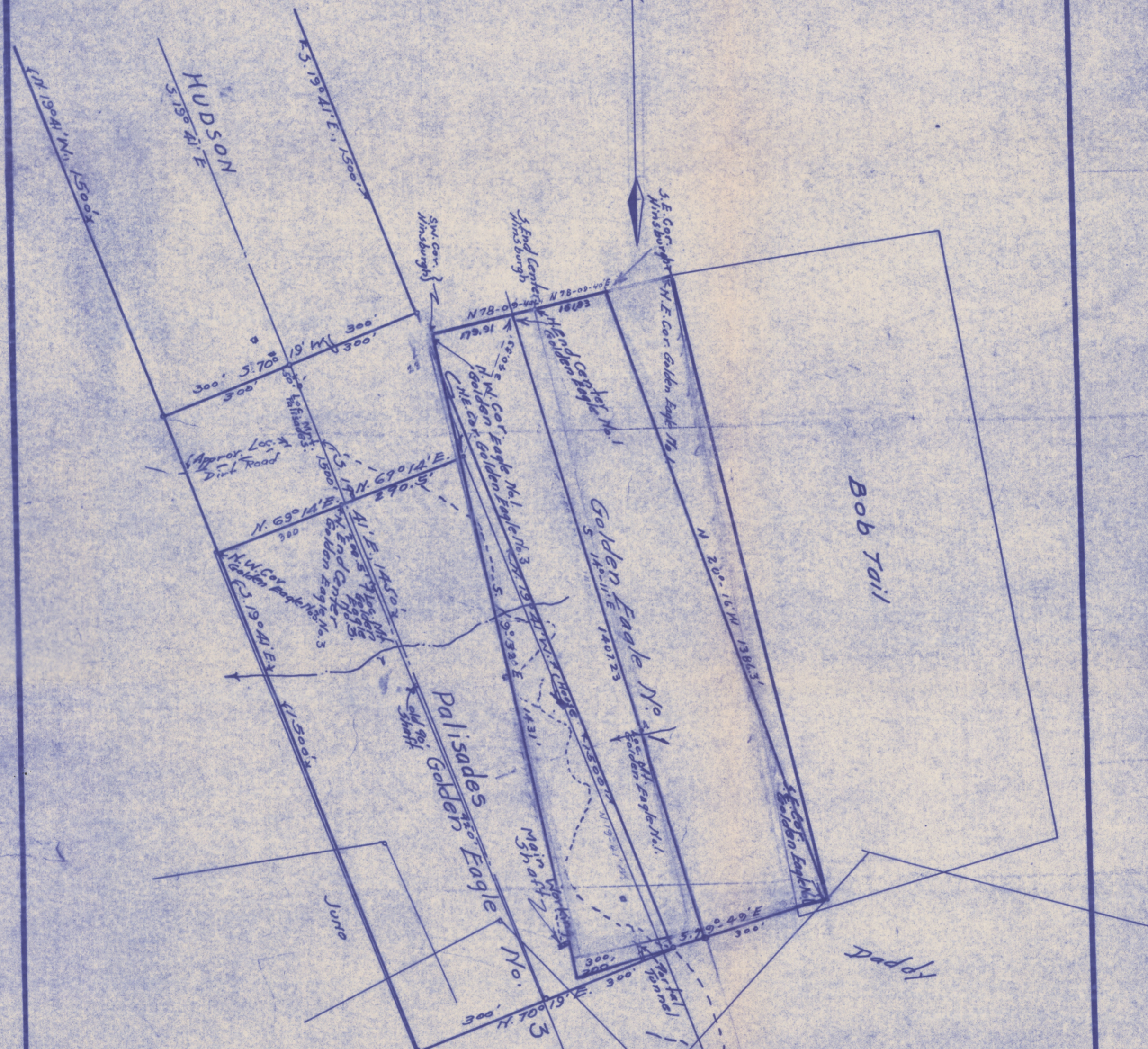


JAL
744-
MORAVIA COUNTY HISTORICAL SOCIETY
MORAVIA, ARIZONA

T. 22 N. R. 17 W.

Legend

- Golden Eagle Claims
- Palisades Claim



This Map Has Been Prepared
From Field Survey Notes,
Data From Official County
Records, Private Maps, And
Personal Notes By

A. S. Jones

Registered Mining Engineer,
Kingman, Arizona
April 1940

Scale 1" = 200'

Map Of A Portion of
Bob Tail Basin
Showing Relative Boundary Lines

Golden Eagle No. 1, 2, 3,
Together With Adjoining Claims Including
Palisades, et al,

In Bob Tail Basin Section,
Wallapai Mining District,
Mohave County, Arizona.

ADMUR 0279-003