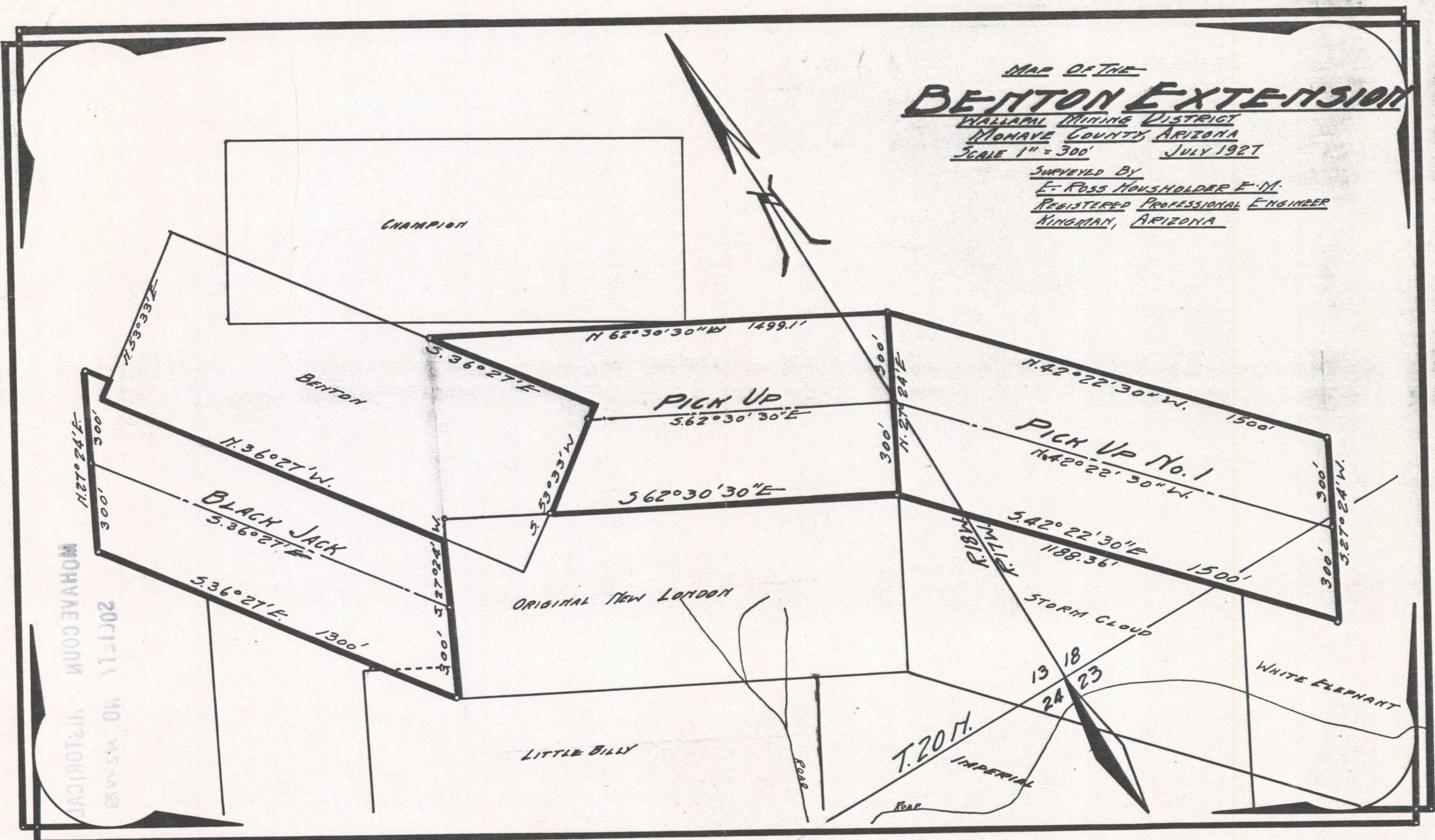


MAP OF THE  
**BELTON EXTENSION**

WALLARU MINING DISTRICT  
 MONAVE COUNTY ARIZONA  
 SCALE 1" = 300' JULY 1927

SURVEYED BY  
 E. ROSS HOUSHOLDER E.M.  
 REGISTERED PROFESSIONAL ENGINEER  
 KINGMAN, ARIZONA



MONAVE CO. 412 TORICAL  
 201-11 40 MS-148  
 127° 24' E

ADMNR 0299-001

M.S. - 148  
 1518