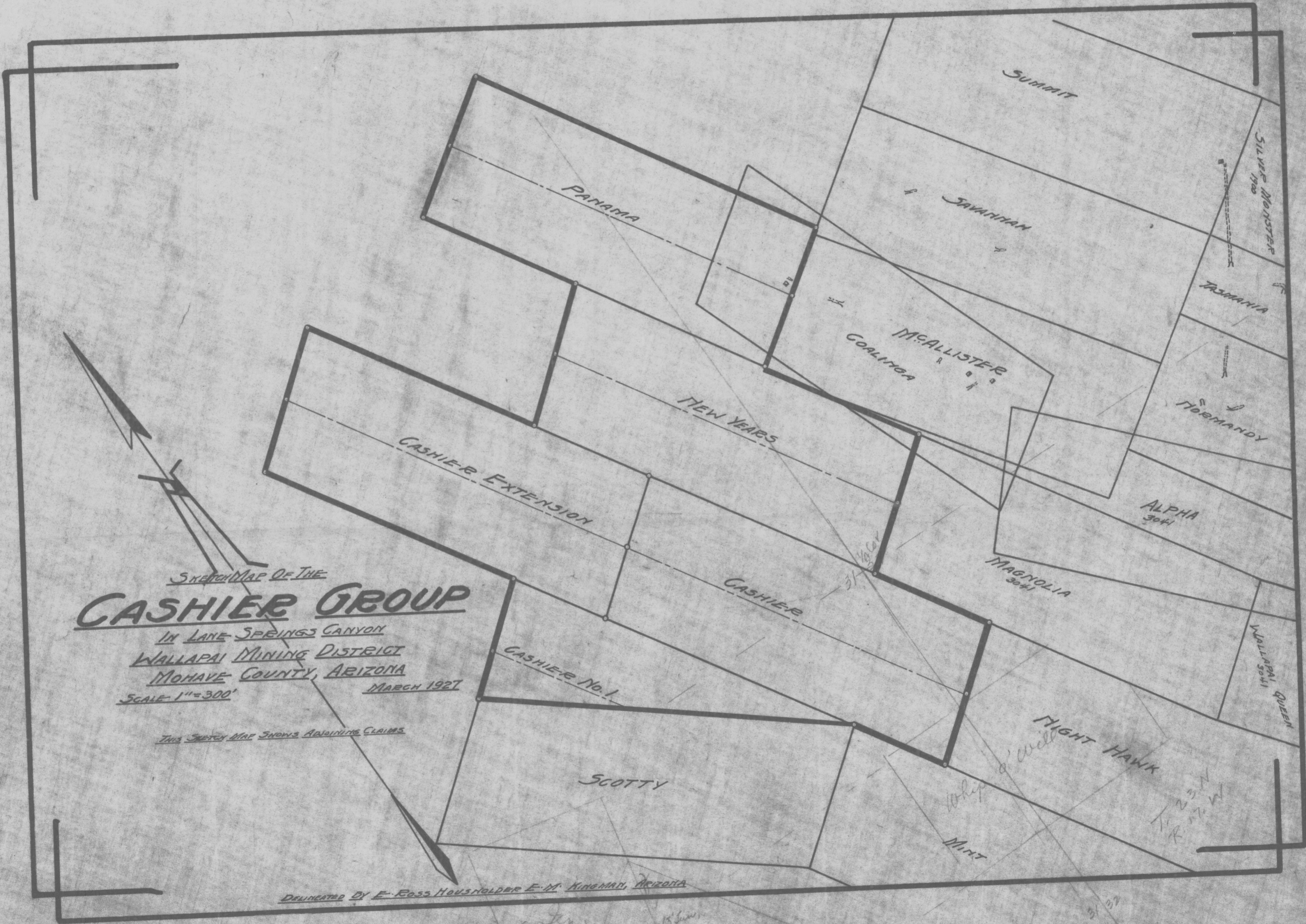


ADMUR 0275-002



SKETCH MAP OF THE  
**CASHIER GROUP**

IN LANE SPRINGS CANYON  
 WALLAPAI MINING DISTRICT  
 MOHAVE COUNTY, ARIZONA

SCALE 1" = 300'

MARCH 1927

THIS SKETCH MAP SHOWS ADJOINING CLAIMS

DELEGATED BY E. ROSS HOUSEHOLDER E. M. KINGMAN, ARIZONA

*James Kingman*  
*(Blue Blue)*  
*765' level*  
*James Kingman's shaft*