

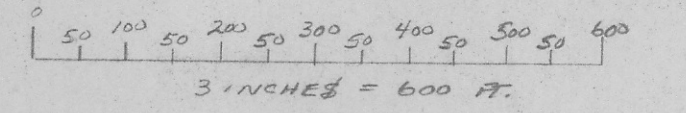
ARIZONA ORE REDUCTION COMPANY.

CHLORIDE ARZ.

MAP NO. 1.

PLAN OF MINING CLAIMS.

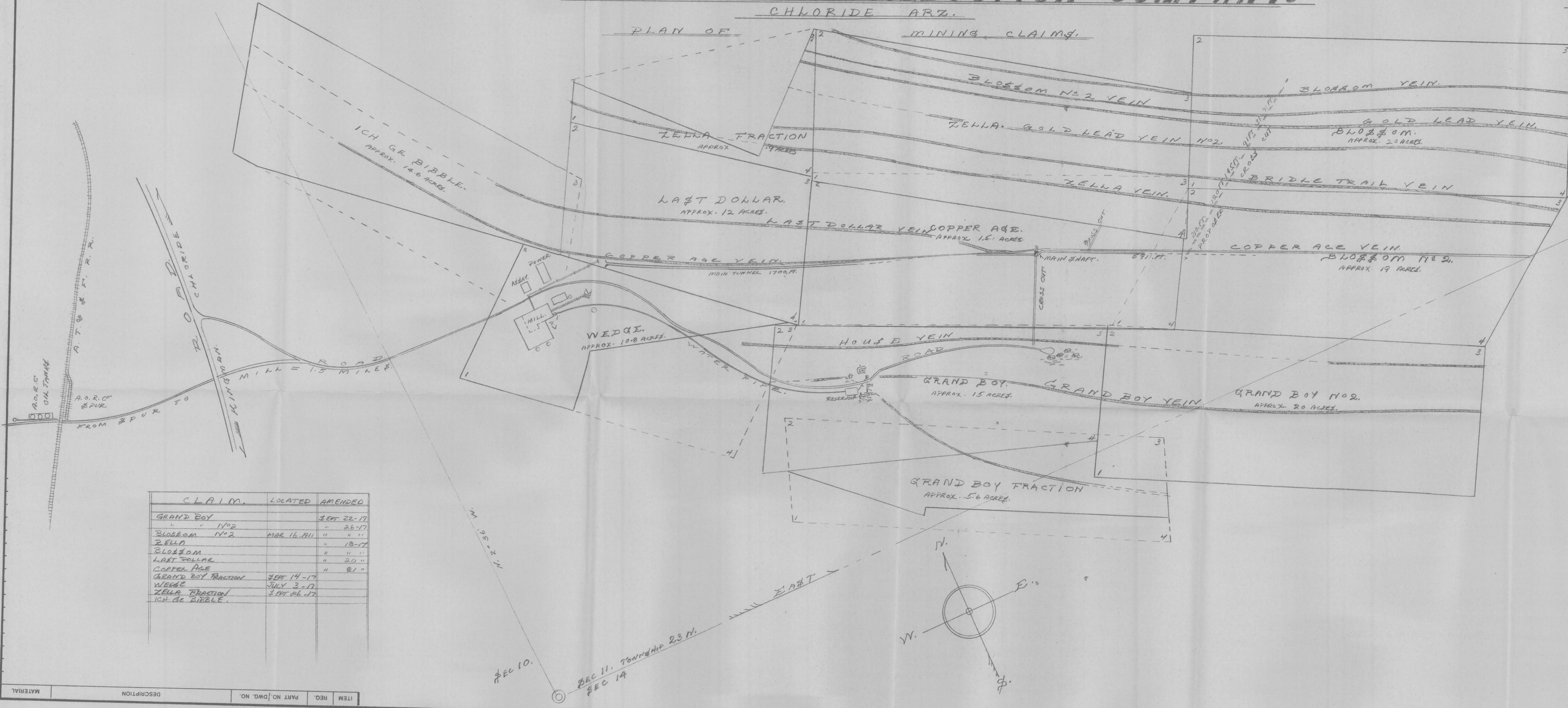
SCALE: 1" = 200 FT.



FRANK NEWNHAM, M. ENG.

RETRACE: SEPT 1908

MOHAVE COUNTY HISTORICAL SOCIETY NO M1-3106



CLAIM.	LOCATED	AMENDED
GRAND BOY		SEPT 22-17
" " NO. 2		" 26-17
BLOSSOM NO. 2	MAR 16, 1911	" "
ZELLA		" 18-17
BLOSSOM		" " "
LAST DOLLAR		" 20 "
COPPER AGE		" 21 "
GRAND BOY FRACTION	SEPT 14-17	
WEDGE	JULY 3-17	
ZELLA FRACTION	SEPT 26-17	
ICH GE BIBBLE.		

ITEM	REQ.	PART NO.	DESCRIPTION	MATERIAL

ADMR 0249-010