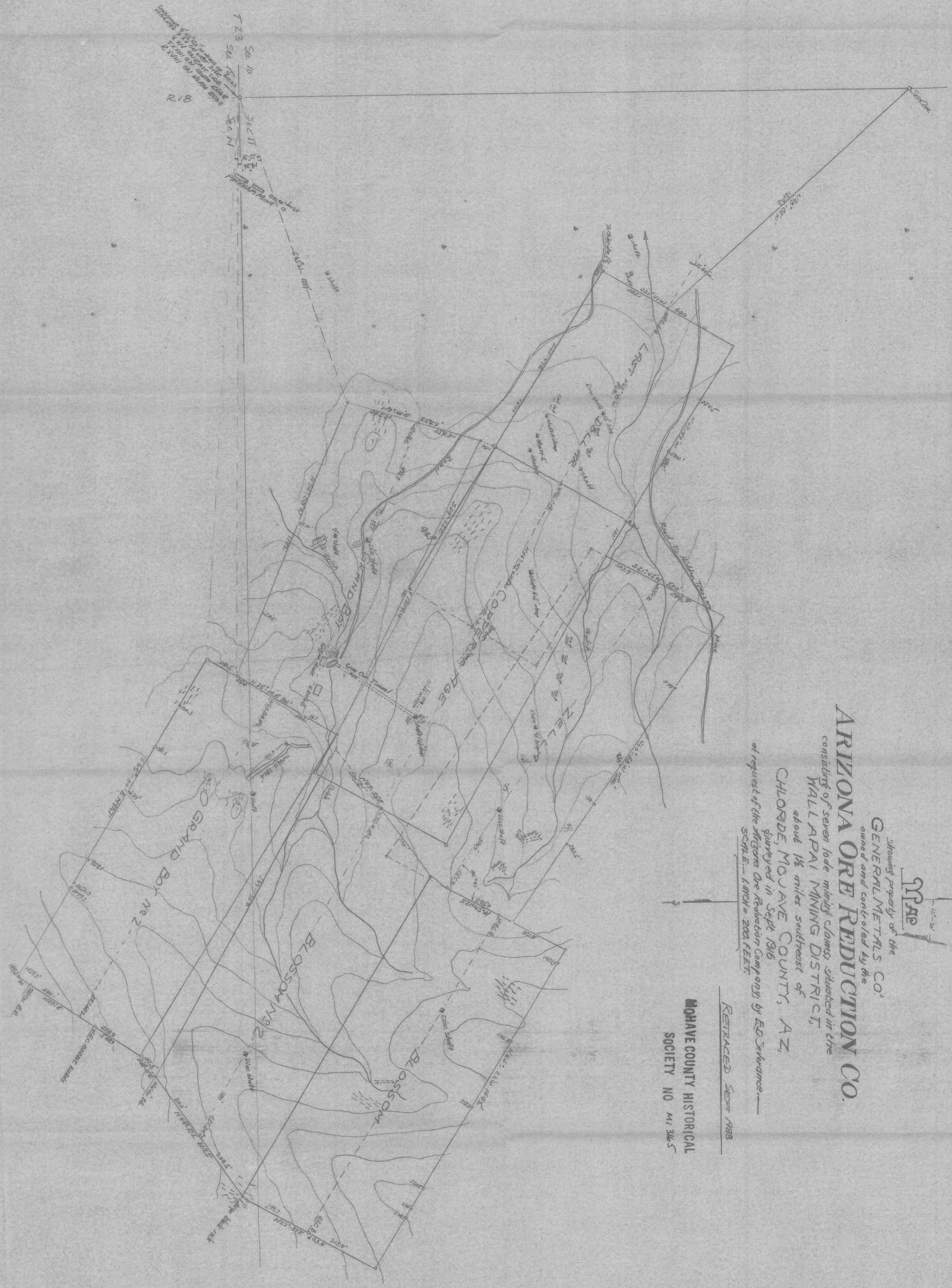
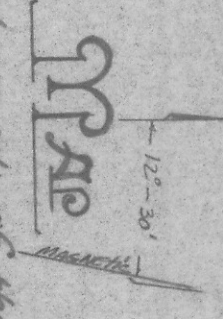


ADWUR 0249-008



Showing property of the
GENERAL METALS CO.
 owned and controlled by the
ARIZONA ORE REDUCTION CO.
 consisting of seven lode-miner's claims, situated in the
 WALLAPAI MINING DISTRICT,
 about 1 1/2 miles southeast of
 CHLODE, MOHAVE COUNTY, AZ.
 Surveyed in Sept. 1916
 at request of the Arizona Ore Reduction Company by E.D. Seligman—
 SCALE—1 INCH = 200 FEET.

RETRACED Sept 1938
 MOHAVE COUNTY HISTORICAL
 SOCIETY NO. M1 316 S



5014