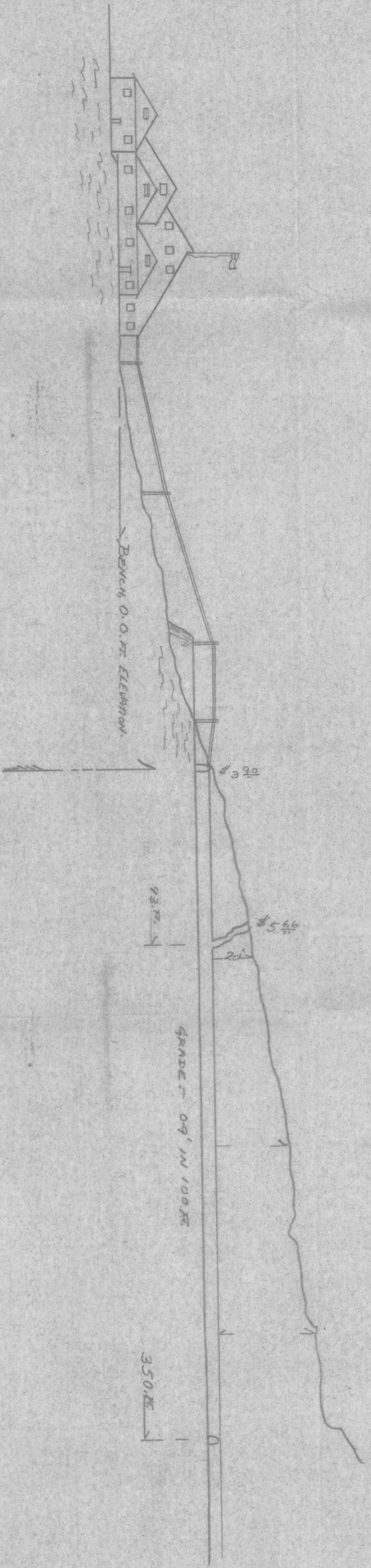


Elevation 0' 0"

Distance from Point + 0.00
37.65
100'
200'
300'
400'

LAST DOLLAR



ARIZONA ORE REDUCTION COMPANY

CHLORIDE

ARIZONA

RETRACE Sept 1938

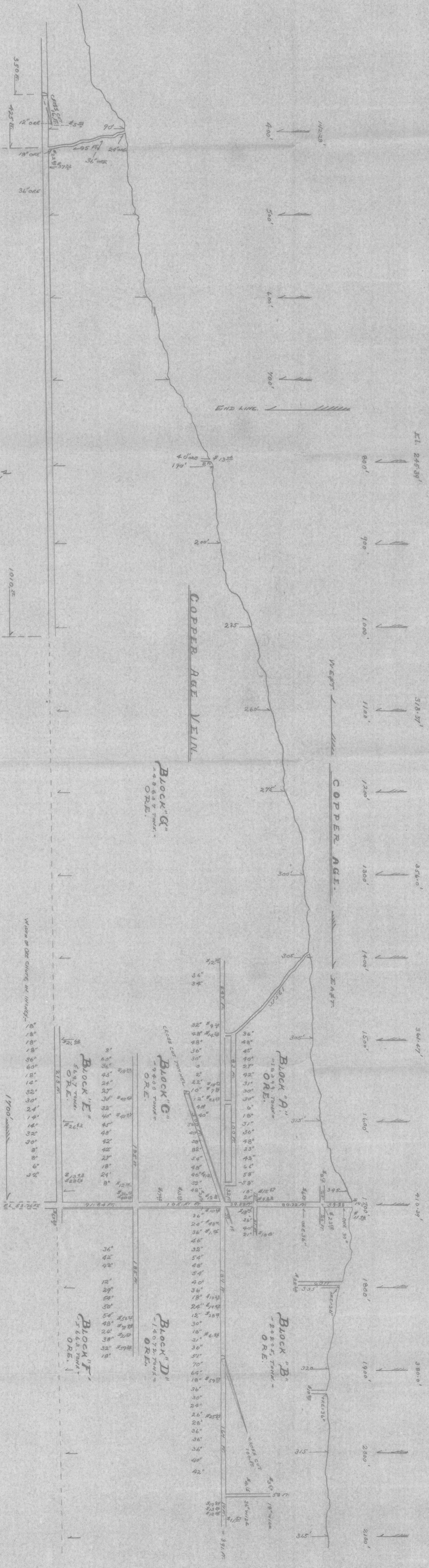
MAP No. 2.
SCALE: 1 inch = 50 feet

MOHAVE COUNTY HISTORICAL SOCIETY NO. M-3628

MAP OF UNDERGROUND MARKINGS, ETC.

MATERIAL DESCRIPTION PART NO. DWG. NO. REV. ITEM

ADWR 0249-007



Vertical Scale in Feet

Block	Top Elevation	Bottom Elevation
BLOCK 'A'	1425.30	1420.00
BLOCK 'B'	1420.00	1410.40
BLOCK 'C'	1410.40	1400.00
BLOCK 'D'	1400.00	1390.00
BLOCK 'E'	1390.00	1380.00
BLOCK 'F'	1380.00	1370.00
BLOCK 'G'	1370.00	1360.00