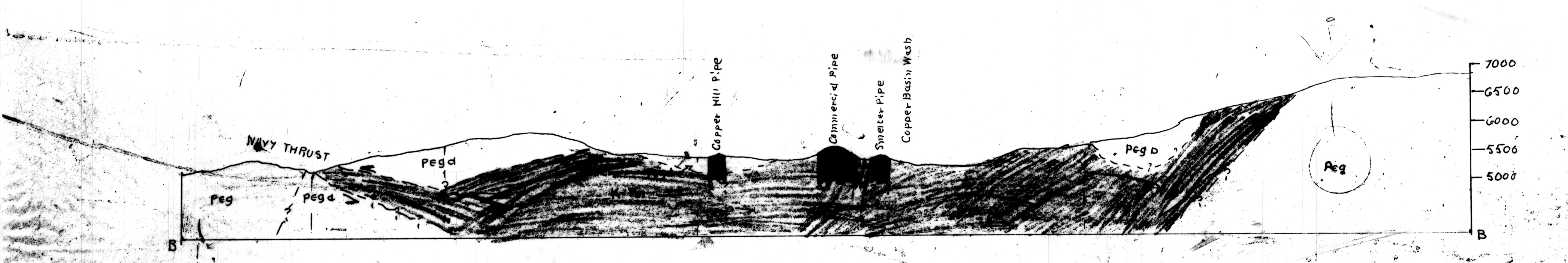
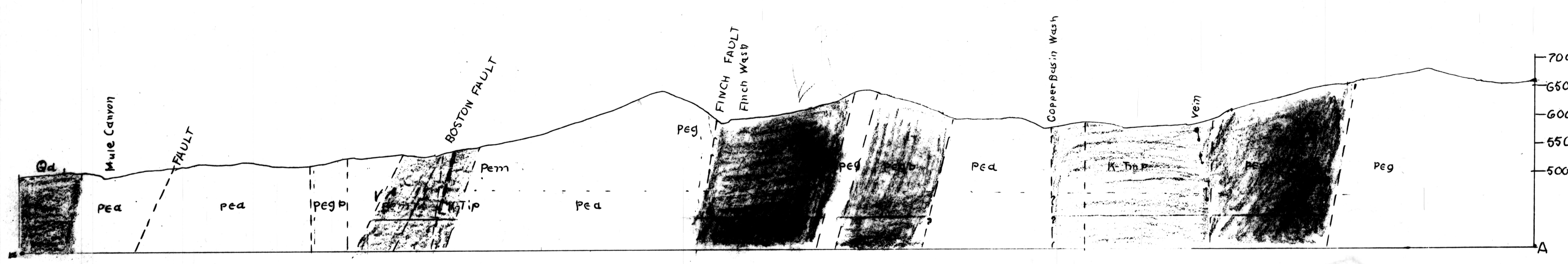




EXPLANATION

QUATERNARY	Qa	Alluvium and Mantle Rock
LATE TERTIARY (?)	T₁	Rhyolite (dike)
	Tr₁	Rhyolite Tuff
LATE CRETACEOUS (?) EARLY TERTIARY (?) COPPER BASIN STOCK ROCKS	K-T_{1p}	Aplite
	K-T_{2p}	Quartz Latite Porphyry Dikes
	K-T_{3p}	Quartz Monzonite Porphyry
	QMP	Quartz Monzonite
	D	Diorite
OLDER PRECAMBRIAN	Peg	Granodiorite
	PEAp	Aplite
	GP	Granodiorite Porphyry
	Pegd	Quartz Diorite
	Pea	Amphibolite
	M	Metosediments
	●	Breccia Pipe
- - -	vein	
- - -	Fault (known)	
- - -	Fault (inferred)	
- - -	Thrust Fault	
- - -	Contact (known)	
- - -	Contact (gradational or inferred)	
- - -	Strike and Dip of Beds	
- - -	Strike and Dip of	
X BM G250	Bench Mark	
Y 480	Supplementary Bench Mark	
5750	Elevation from Contours	
X	Mine	
■	Building	
- - -	Graded Road	
- - -	Mine Road	
- - -	Intermittent Stream	
- - -	Electric Transmission Line	



GEOLOGIC MAP OF THE COPPER BASIN MINING DISTRICT, YAVAPAI COUNTY, ARIZONA

Geological
Map