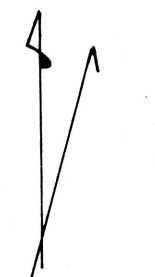
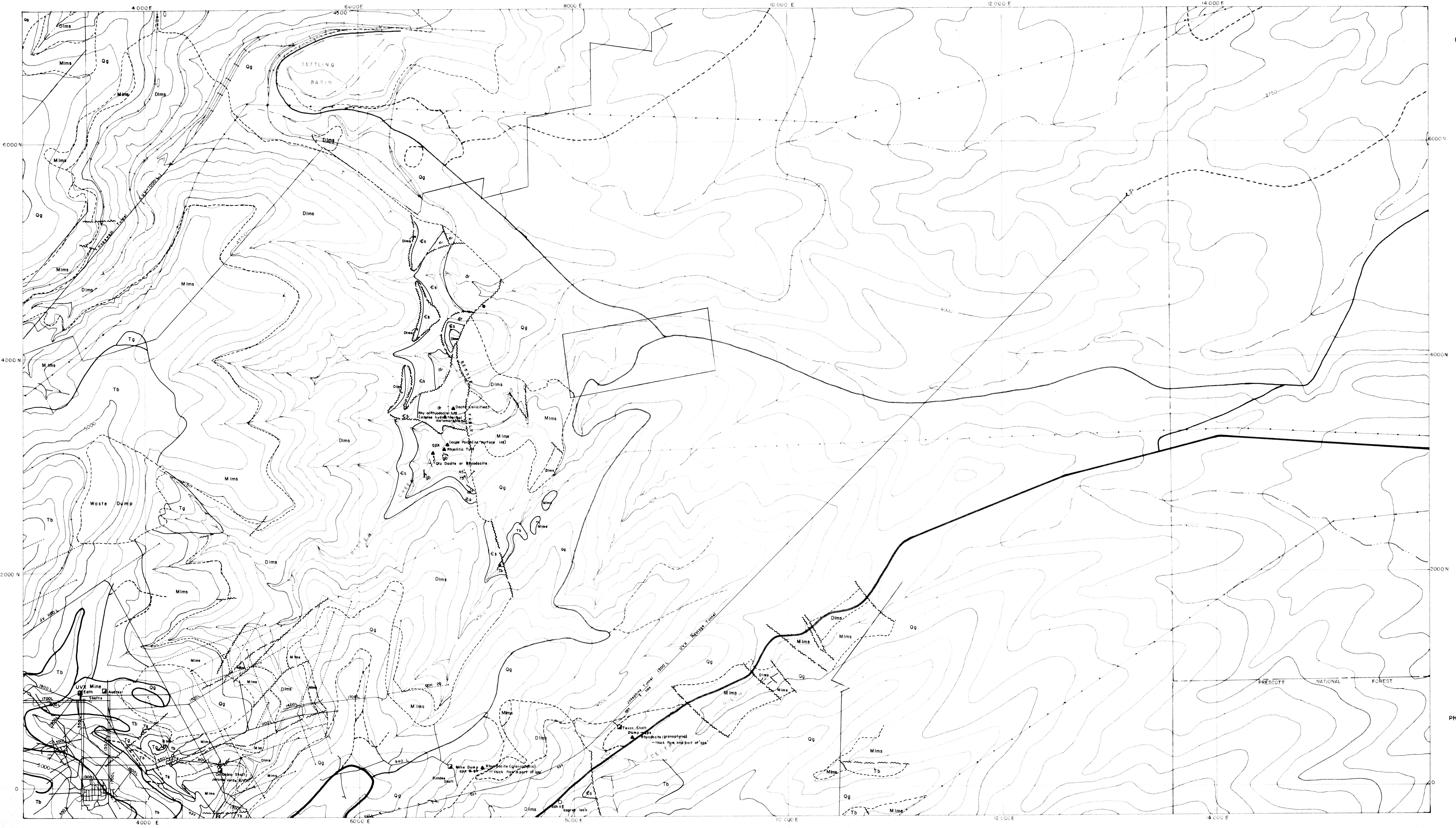


-NOTES-

Relative Mine Levels With Elevations

- U.V. - Hopewell Tunnel - U.V. - 1000 L (4525)
- Jerome Verde (UVX) - 1100 L = UVX. - 1300 L (3799)
- Dundee Arizona 940 L (3804) = UVX. 1300 L (3799)
- U.V.X. #50 L (4568) = U.V. 1000 L (4525)
- UVX. Josephine Tunnel = UVX. 1300 L (3799)



PHELPS DODGE CORPORATION - WESTERN EXPLORATION OFFICE

C-70
GEOLOGICAL COMPILATION

