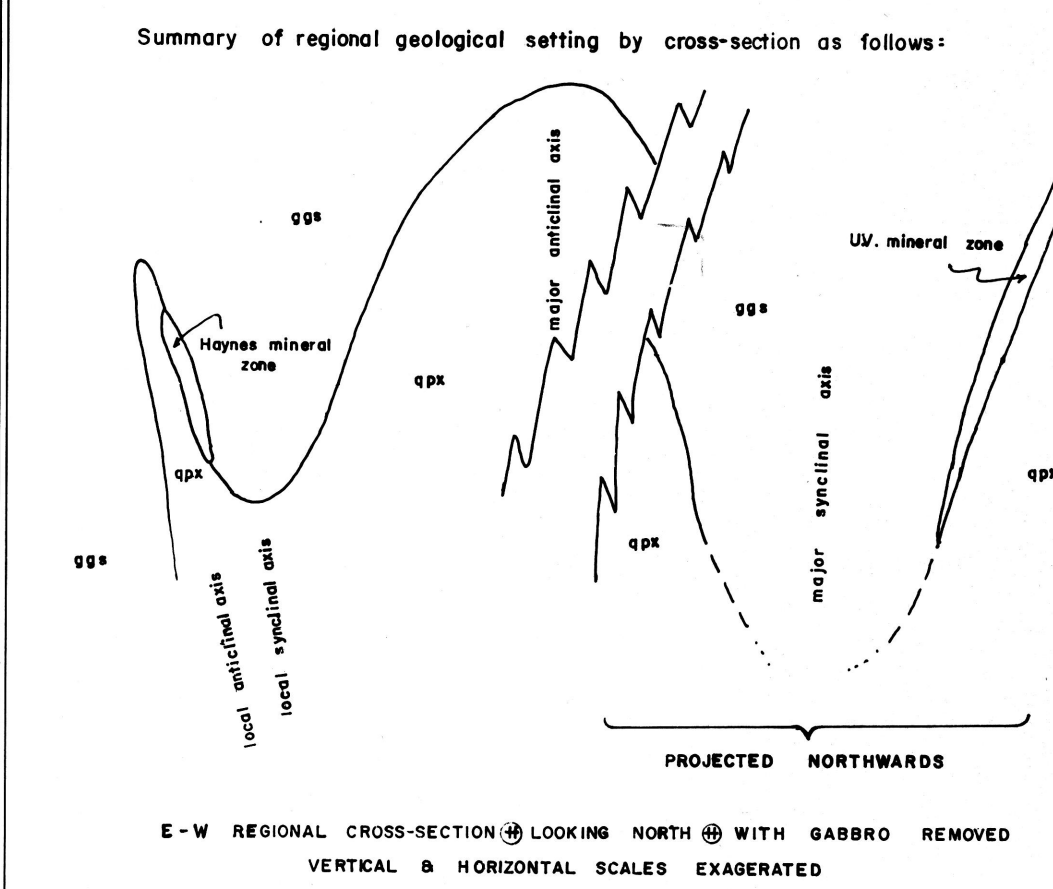


- NOTES-**
- VARIOUS LEVELS BY PROJECTION AT HAYNES MINERALIZED ZONE
- SHOWING:
1. Summary of pertinent geology
 2. Principal structural interpretations
 3. Locations of petrographic examinations relative to geology - 1/3 data are tabulated on C-69 Supplement "A"
 4. Note scale of level plans - 1 inch = 30 feet. & scale of section - 1 inch = 50 feet.



E-W REGIONAL CROSS-SECTION @ LOOKING NORTH @ WITH GABRO REMOVED
VERTICAL & HORIZONTAL SCALES EXAGGERATED

E-W DIAGRAMATIC SECTION OF HAYNES AREA
LOOKING NORTH
SECTION ON 1830N

Note: scale 1 inch = 50 feet

Showing - sulphide lens relative to overturned anticlinal structure.

(Geological Interpretation by J.O.S. March 1969)

PHELPS DODGE CORPORATION-WESTERN EXPLORATION OFFICE

C-69
GEOLOGICAL COMPILATION
SUPPLEMENT
"B"

