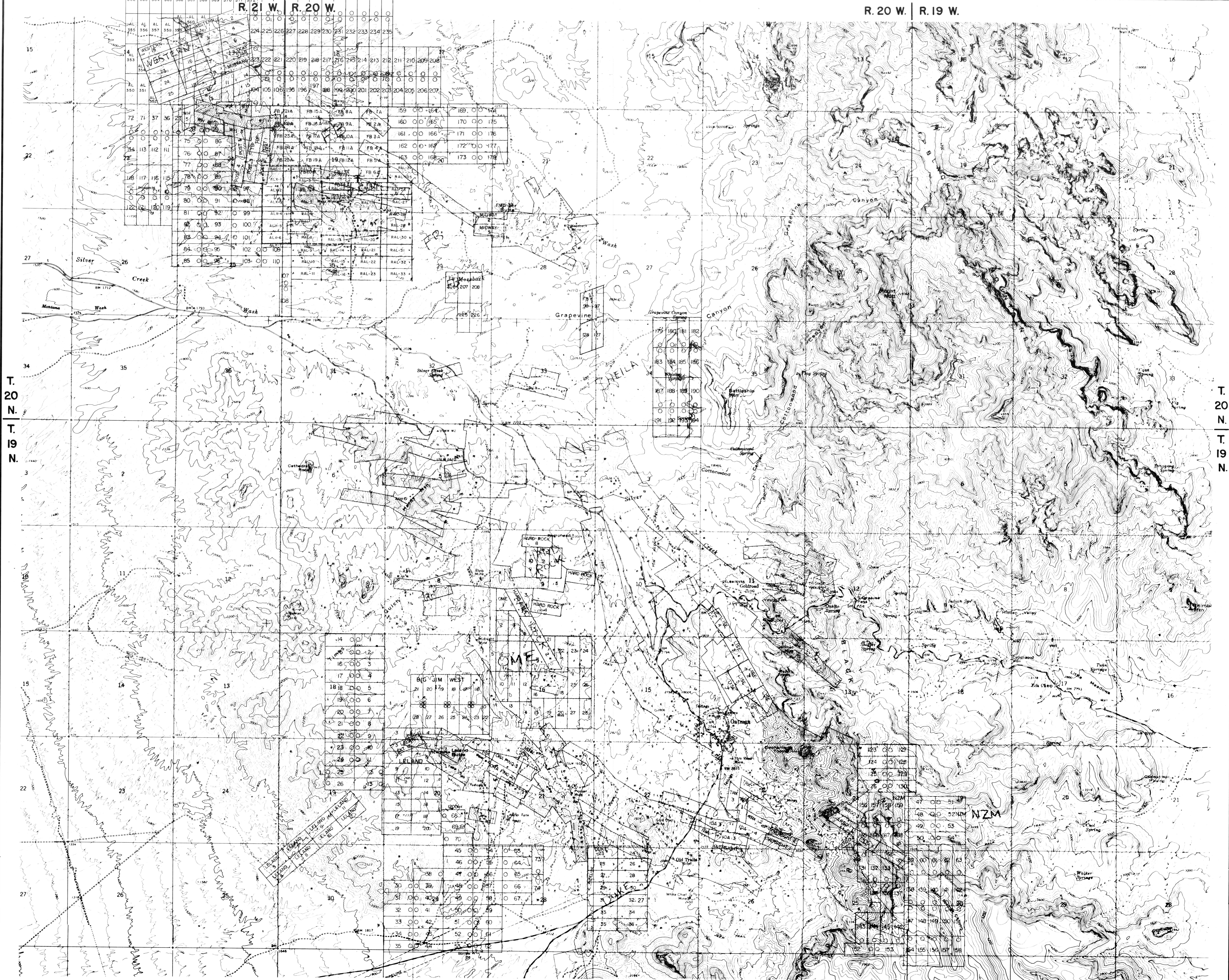


R. 21 W. R. 20 W.

R. 20 W. R. 19 W.



R. 21 W. R. 20 W.

R. 20 W. R. 19 W.

MAP

LODE MINING CLAIMS
 WITHIN
 TOWNSHIPS 19 & 20 NORTH RANGES 19, 20 & 21 WEST
 61.4 and SALT RIVER MERIDIAN
 MOHAVE COUNTY, ARIZONA
 FOR
 ROCKY MOUNTAIN SURVEYORS
 P.O. BOX 14057
 ALBUQUERQUE, NEW MEXICO 87191

○ LOCATION MONUMENT
 ALL CLAIMS ARE 600'x1500' UNLESS OTHERWISE NOTED.
 ALL LOCATION MONUMENTS ARE OFFSET 10' FROM END CENTERS UNLESS OTHERWISE NOTED.
 ALL LOCATION MONUMENTS, END CENTERS AND CORNERS ARE MONUMENTED WITH 2" x 2" x 1/2" WOOD POSTS.

AL CLAIMS 1-247
 LOCATED FEBRUARY 4 - MARCH 13, 1988
 NZM CLAIMS (AMENDED) 47-54, 59-63, 156-159 and 165-168 ON MARCH 13/12, 1988