

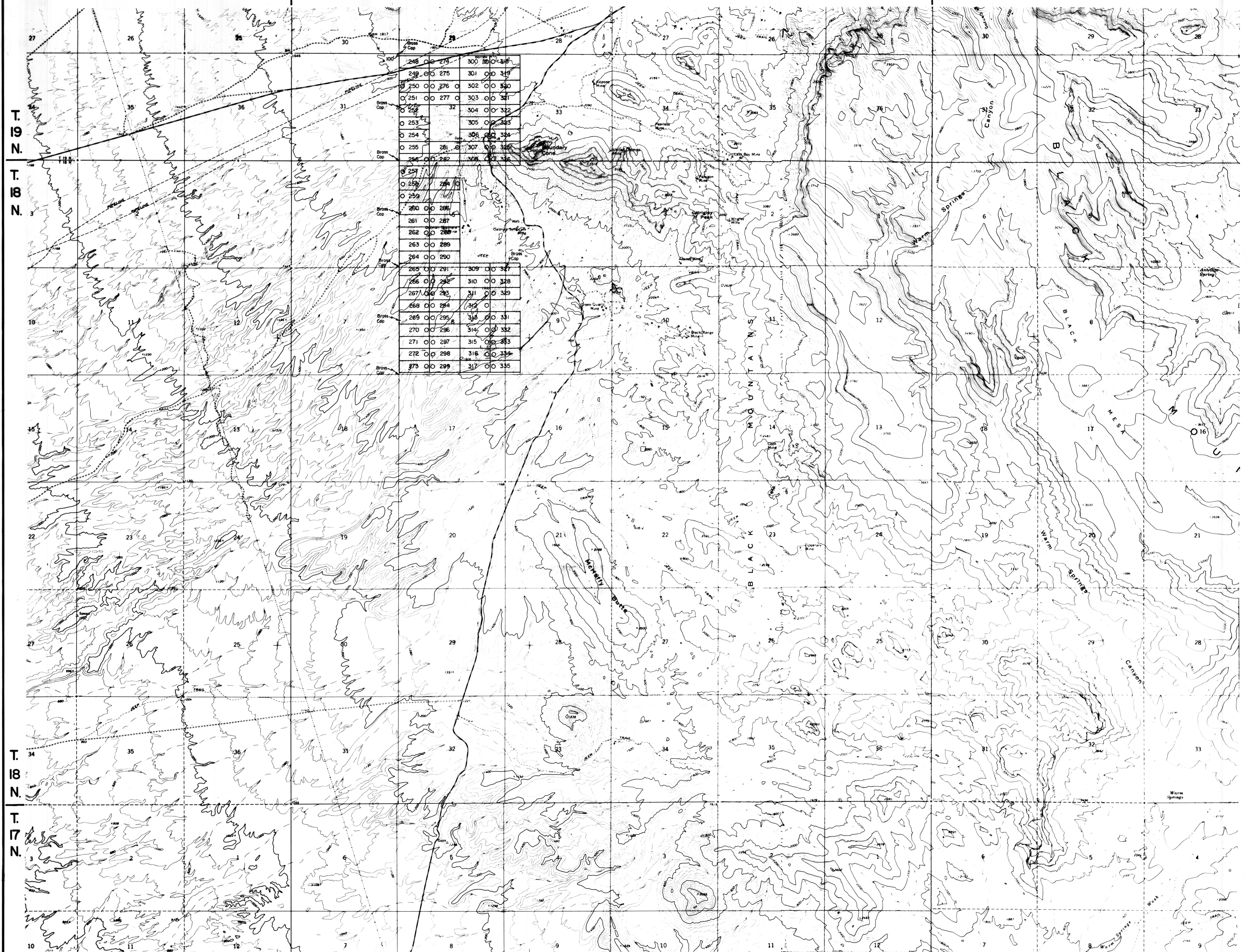
R. 21 W. R. 20 W.

R. 20 W. R. 19 W.

T. 19 N.
T. 18 N.

T. 18 N.
T. 17 N.

248	273	300	315
249	275	301	316
250	276	302	317
251	277	303	318
252	278	304	319
253	279	305	320
254	280	306	321
255	281	307	322
256	282	308	323
257	283	309	324
258	284	310	325
259	285	311	326
260	286	312	327
261	287	313	328
262	288	314	329
263	289	315	330
264	290	316	331
265	291	317	332
266	292	318	333
267	293	319	334
268	294	320	335
269	295	321	336
270	296	322	337
271	297	323	338
272	298	324	339
273	299	325	340



MAP

LODE MINING CLAIMS
 WITHIN
 TOWNSHIPS 18 & 19 NORTH, RANGE 20 WEST
 GILA AND SALT RIVER MERIDIAN
 MOHAVE COUNTY, ARIZONA
 FOR
 ROCKY MOUNTAIN SURVEYORS
 P.O. BOX 14057
 ALBUQUERQUE, NEW MEXICO 87191

AL CLAIMS 248-277, 281, 282, 284, 286-329, 331-335
 LOCATED: FEBRUARY 21, 1988

○ LOCATION MONUMENT
 ALL CLAIMS ARE 600' x 1500' UNLESS OTHERWISE NOTED.
 ALL LOCATION MONUMENTS ARE OFFSET 10' FROM END CENTERS UNLESS OTHERWISE NOTED.
 ALL LOCATION MONUMENTS, END CENTERS AND CORNERS ARE MONUMENTED WITH 2" x 2" x 4 1/2" WOOD POSTS.

