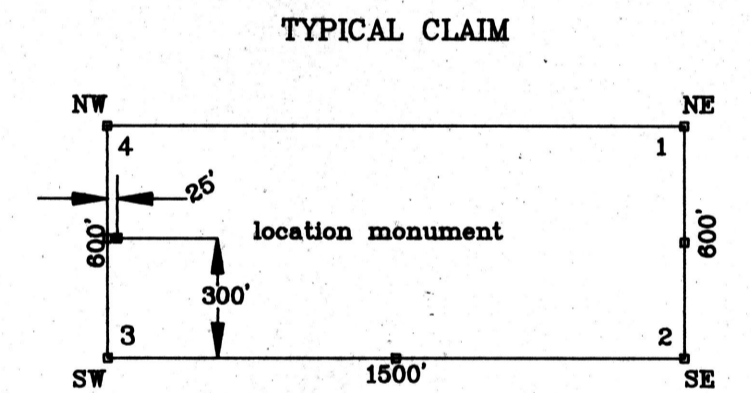
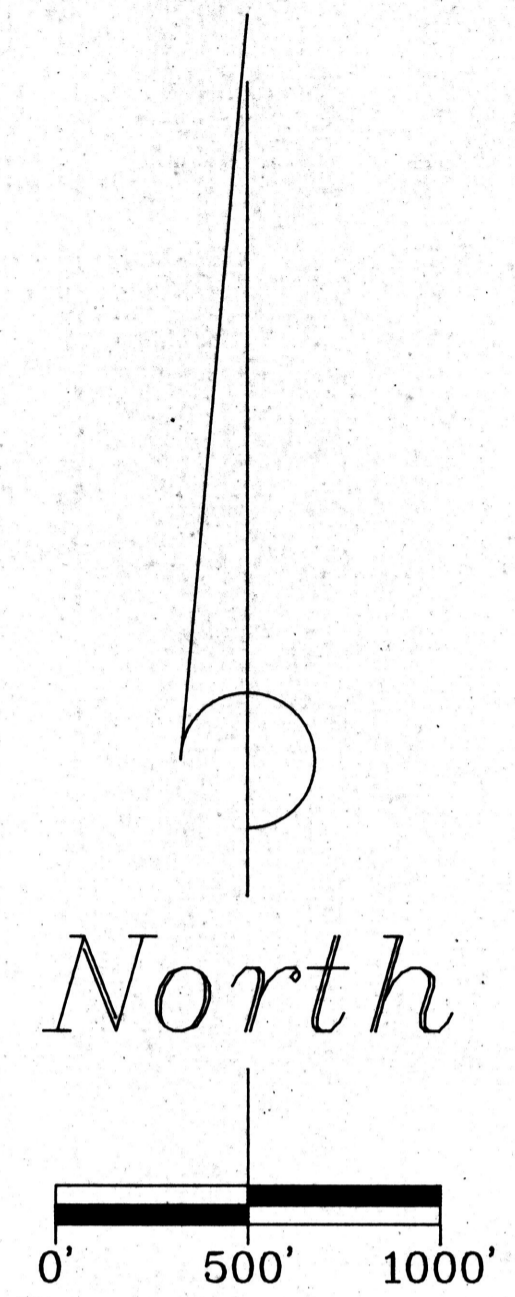
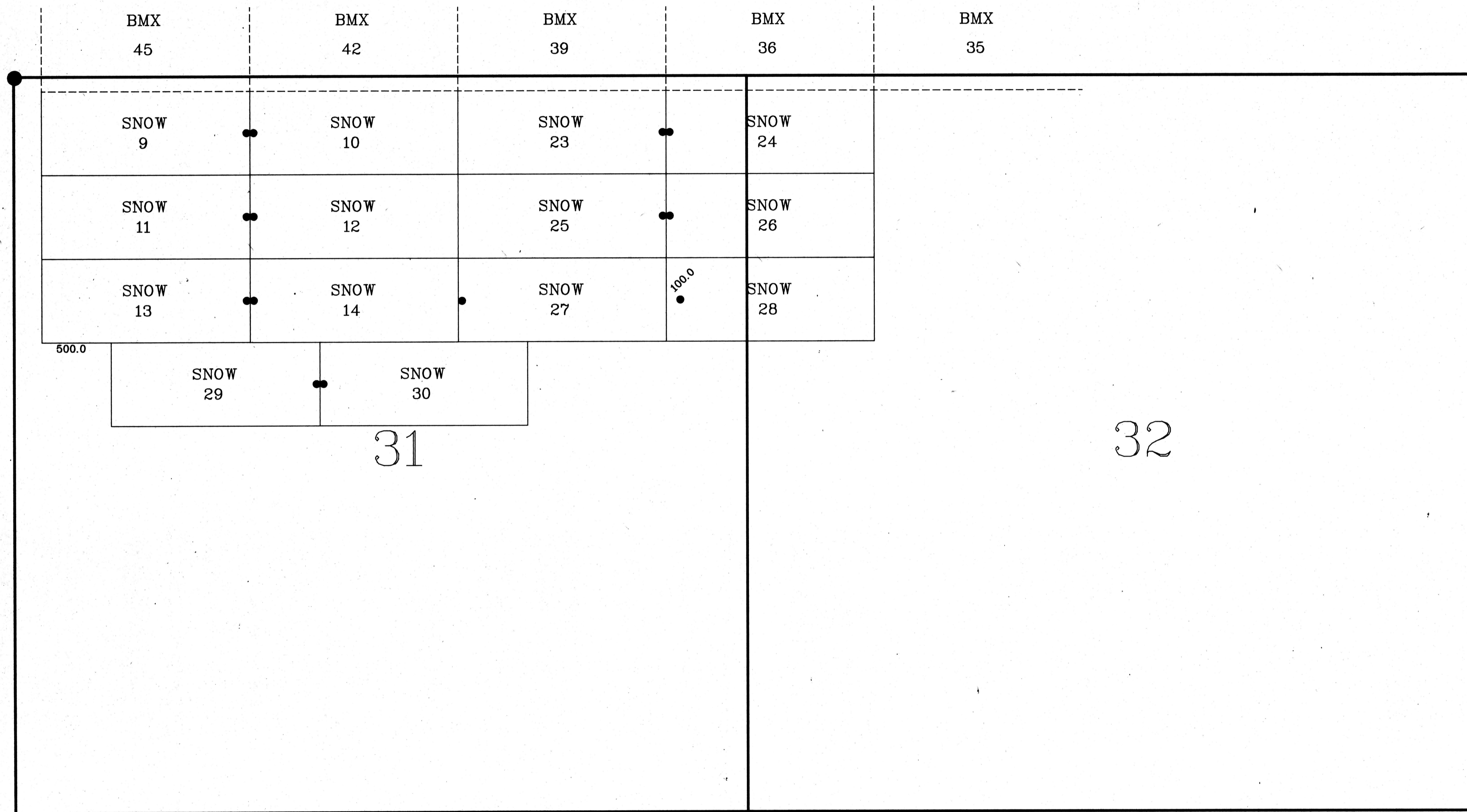


A MAP OF THE SNOW CLAIMS
SECS. 31 AND 32
T. 20 N., R. 20 W., G. & S. R. M.
MOHAVE COUNTY, ARIZONA

TIE CORNER:
THE NW. COR. SEC. 31



TIE:
The NW. Cor. of Sec. 31 bears North 105 ft. and West 200 ft.
from the NW. Cor. of SNOW 9.

NOTE: All Section lines are projected.

R. 21 W.
R. 20 W.

| | | | | |
|--|--|------------------------|------------------|-----------------------------------|
| REYNOLDS METALS EXPLORATION, INC. 5301 LONGELY LANE SUITE 157 RENO, NV. 89511 | | LOCATED BY E. E. S. | DATE 11-19-91 | CKD. BY E. SCHAAF & ASSOCIATES |
| | | DRAWN BY E. E. S. | SCALE 1"=500' | ACCT. NO. J9112 |
| | | | SHEET 1 OF 1 | |