

LEGEND



COLOUR CODE

B Brown	d - dark
G Grey	l - light
M Maroon	p - pale
O Orange	
R Red	
Y Yellow	

ALTERATION/MINERALIZATION

1 Hematite	
2 Limonite	w - weak
3 Carbonate	m - moderate
4 Chlorite	s - strong
5 Clay	
6 Silica	
7 Saussurite	
8 Epidote	
9 Pyrite	
10 Sericite	
11 Magnetite	

ROCK TYPES

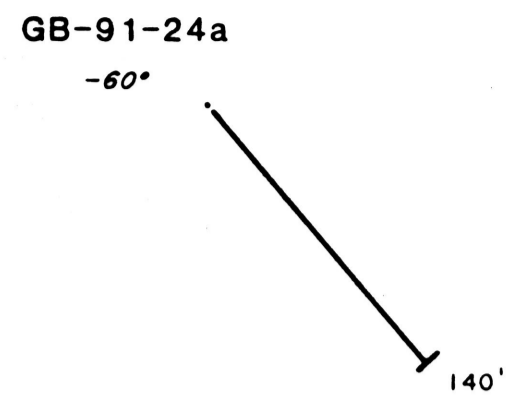
C	Clay dyke
Lam	Lamprophyre dyke
+ +	Precambrian biotite monzogranite, fine grained
+ +	Precambrian biotite monzogranite, medium to coarse.
*	Precambrian gneiss: quartz - feldspar biotite, medium to coarse grained.

STRUCTURE

Fol.	Foliation
~	Fault
rv	Poor recovery (≤60%)

ASSAYS

.026	Gold in oz/ton at 5 feet intervals
<	Less than .001



10+00S 9+00S 8+00S 7+00S 6+00S L. 70+00W

PLAN

SECTION

ELEVATION

4900'

4800'

4700'

4600'

4500'

ELEVATION

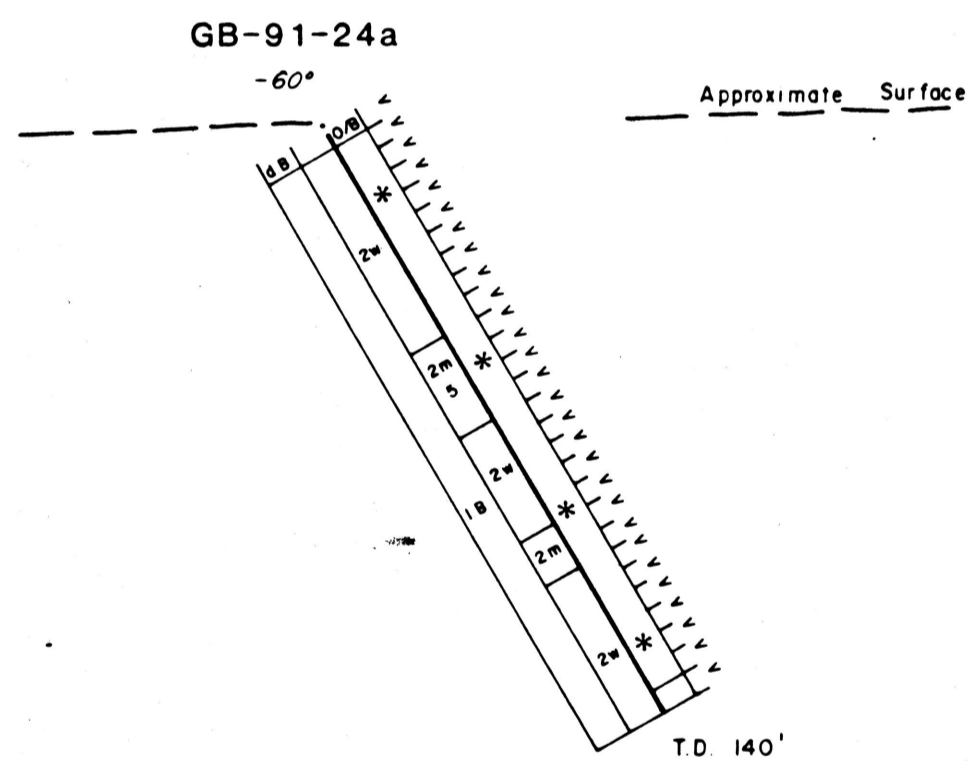
4900'

4800'

4700'

4600'

4500'



CONSOLIDATED RHODES RESOURCES LTD.

GOLD BASIN PROJECT
RANGE 18W & 19W, TOWNSHIP 28N,
MOHAVE COUNTY, ARIZONA

WEST FAULT ZONE
PLAN AND SECTION
DRILL HOLE GB-91-24a

LOOKING 360°

DATE: APRIL, 1991

SCALE: 1" = 40'

FIGURE No. 4.8