

Rock 18 x 18 x 42 ins.
 x on boulder 4 x 3 ft
 brs. N26°E 13 ft.

Schist 6 x 12 x 26 ins
 mid stones alongside

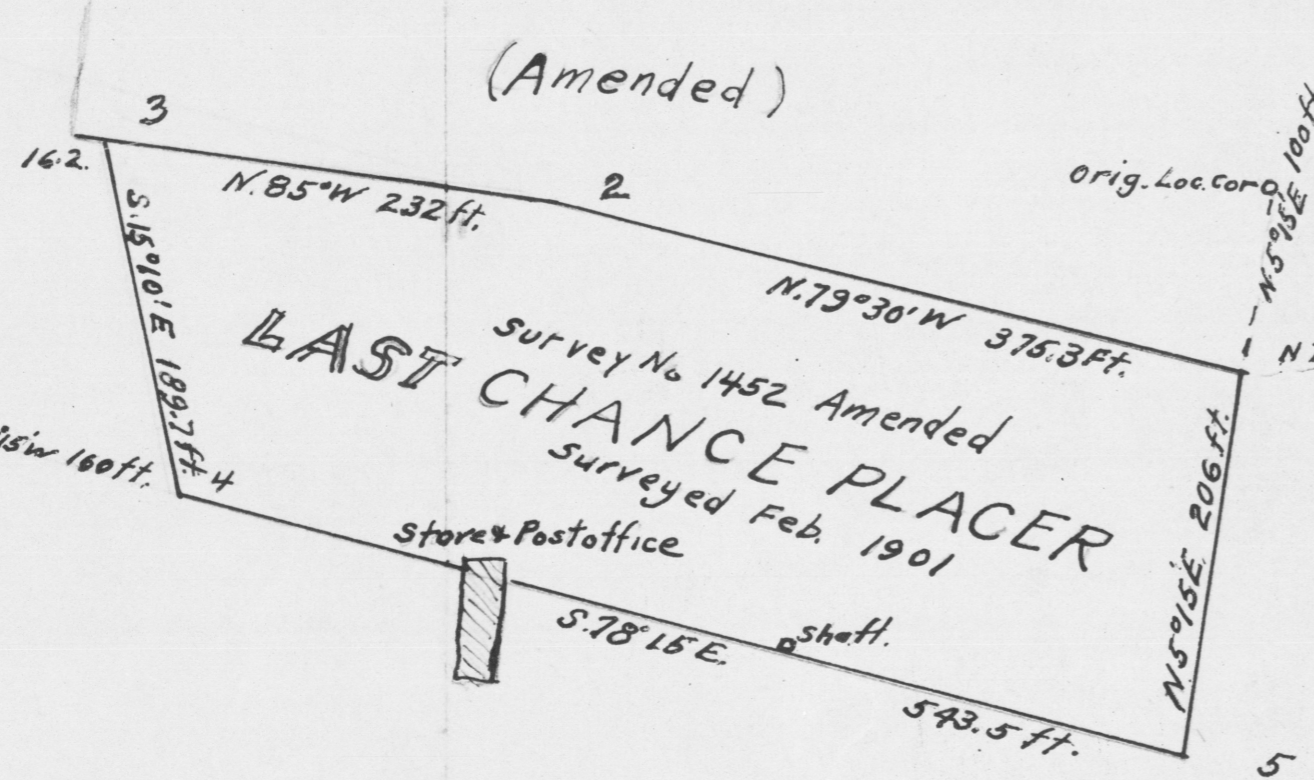
blue schist 10 x 12 x 20
 Mof.s. alongside
 x on ledge 2 x 7 x 3 ft.
 brs N58°E 16.7 ft.

Schist stone 12 x 2 1/2 x 10
 Mof.s. alongside
 x on ledge brs 548°W 28.7 ft.
 3 x 6 x 3 1/2 ft.

Gr. St. 8 x 10 x 24 ins.
 M. of S. 3 x 3 alongside
 x on rock in place 80°10'E
 31.5 ft.
 x " " " N72°42'E
 87.2 ft.

Cor. No. 3
 Malpais st. 8 x 12 x 24
 Mof.s. 3 x 3 ft. alongside
 x on rock 523°25'W 19.6
 " " " N72°30'W 25.5

Original Survey
 Feb. 1900



LAST CHANCE PLACER
 Survey No 1452 Amended
 surveyed Feb. 1901

DEEP DIGINS PLACER
 M.S. 1451
 surveyed 1900

STANTON
 M.S. 1736
 surveyed 1902

MIDNIGHT
 M.S. 2201

PLACER
 M.S. 1420
 surveyed 1899

BLUE G
 M.S. 1744
 surveyed 1902

TRINIDAD

M.M.
 1277