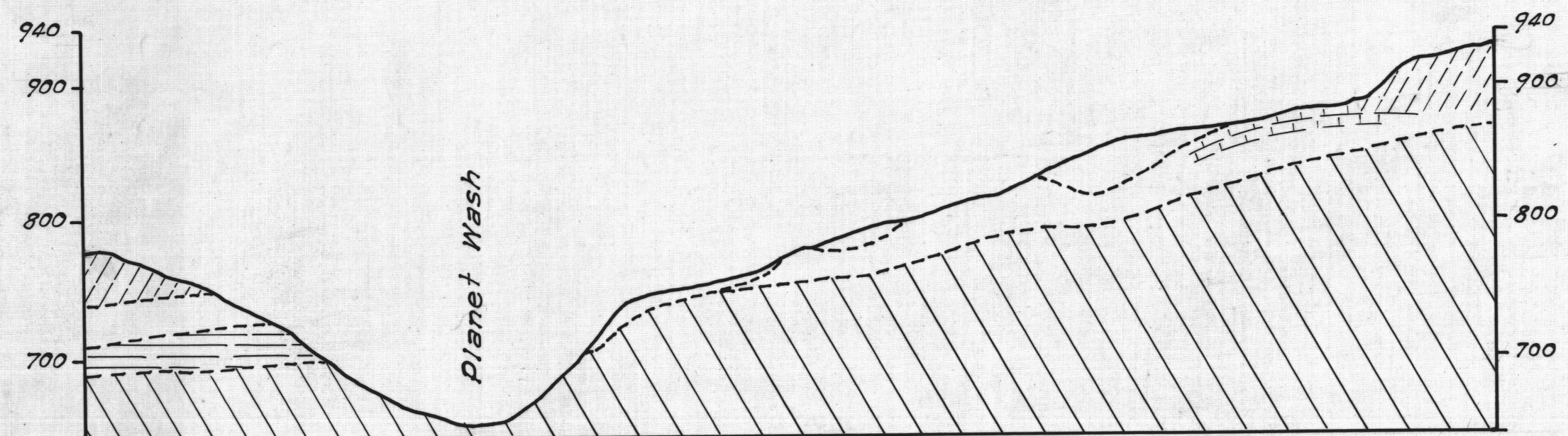
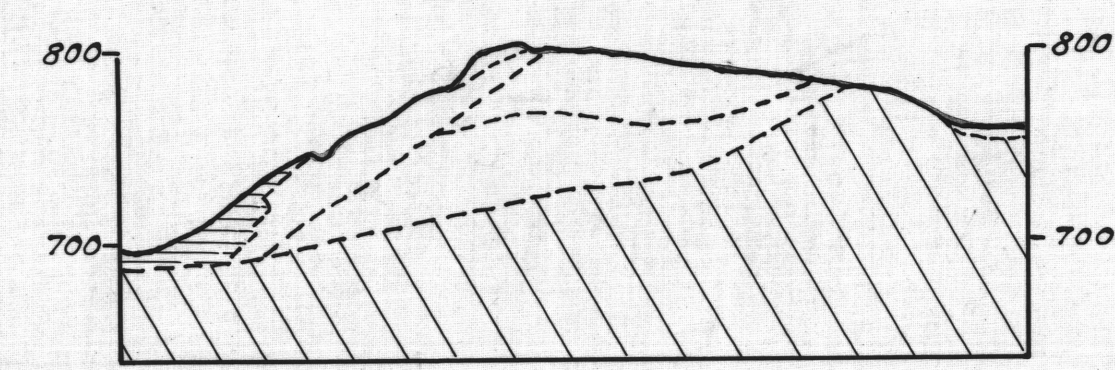


SECTION A-A



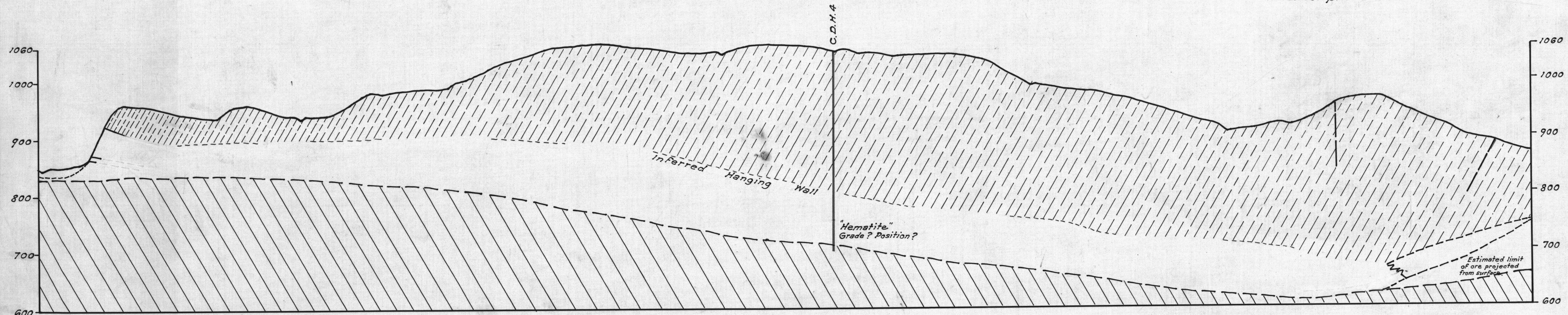
SECTION B-B



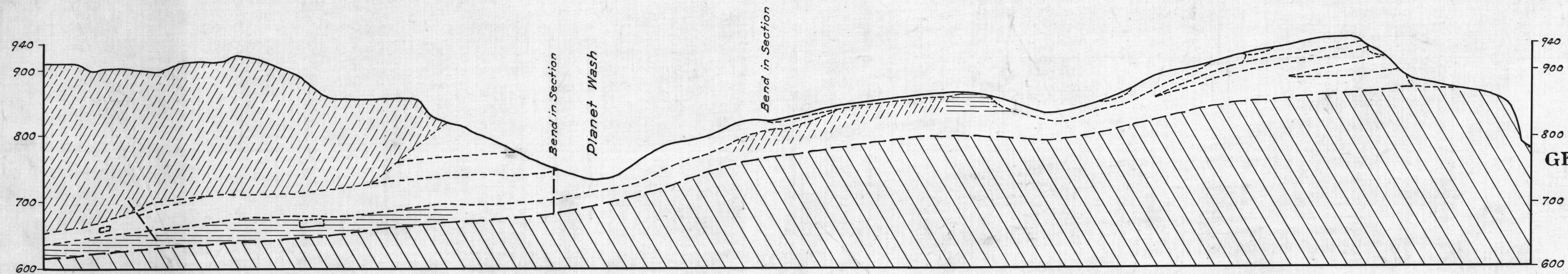
SECTION C-C

- EXPLANATION**
- Alluvium, talus and dumps.
 - Schist and brecciated schist.
 - Limestone
 - Siliceous breccia and gouge.
 - Gneiss - top contact is a low angle dip fault.
 - Iron ore "A"
 - Iron ore "B"
 - Ferruginous rock stained to 35% Fe (Not commercial.)
 - Fault

NOTE:
The data herein recorded is based in part upon confidential information furnished by the United States Bureau of Mines and therefore not for public distribution.



SECTION D-D



SECTION E-E

The A.T. & S.F. Ry., Co.
Department of Mineral Resources.
GEOLOGICAL CROSS SECTIONS
New Planet Copper Mining Co.,
IRON ORE DEPOSIT
Yuma County
Arizona

Nov. 1943
Scale in feet
0 50 100 200 300