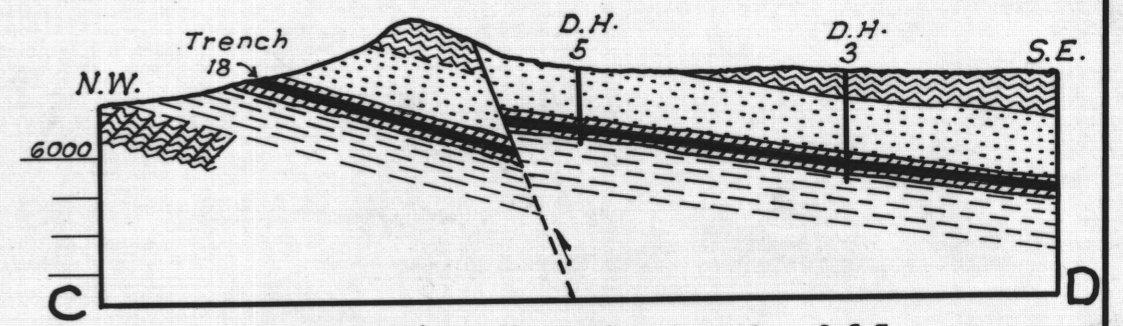
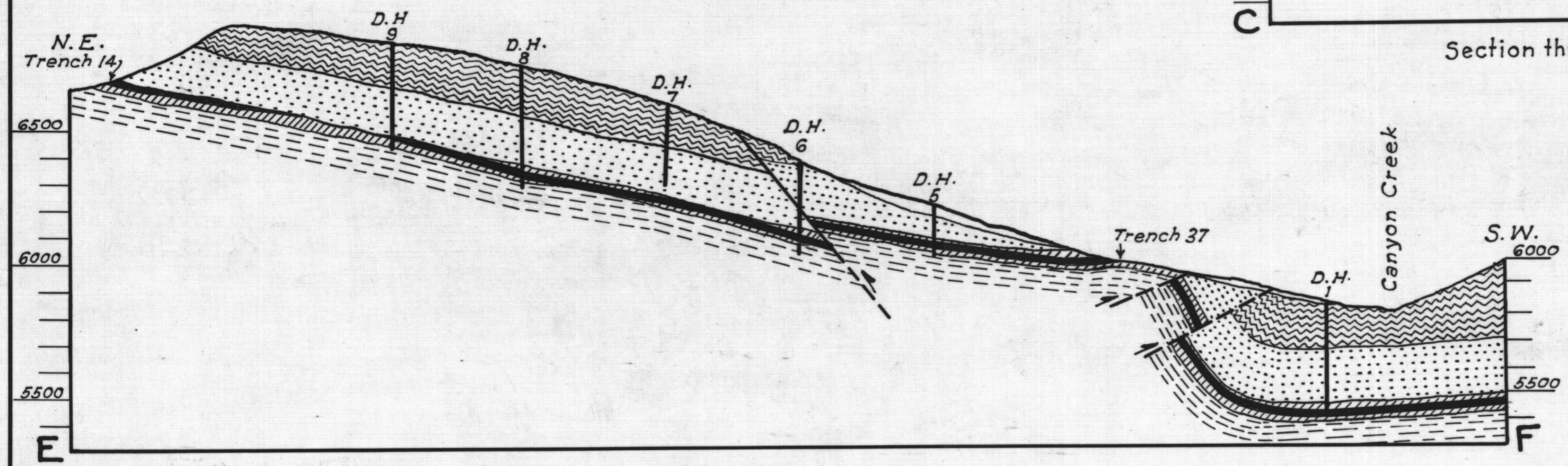


Section through drill holes 17, 3, 4 & 2



Section through drill holes 3 & 5



Section through drill holes 9, 8, 7, 6, 5 & 1.

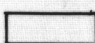


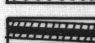
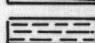

- ~ EXPLANATION ~
-  Talus and alluvium
 -  Troy quartzite.
 -  Chediski sandstone.
 -  Ore zone and main ore body.
 -  Mescal formation.
 -  Dripping Springs quartzite.

FIG. 7 VERTICAL SECTIONS
After Geological Survey.

