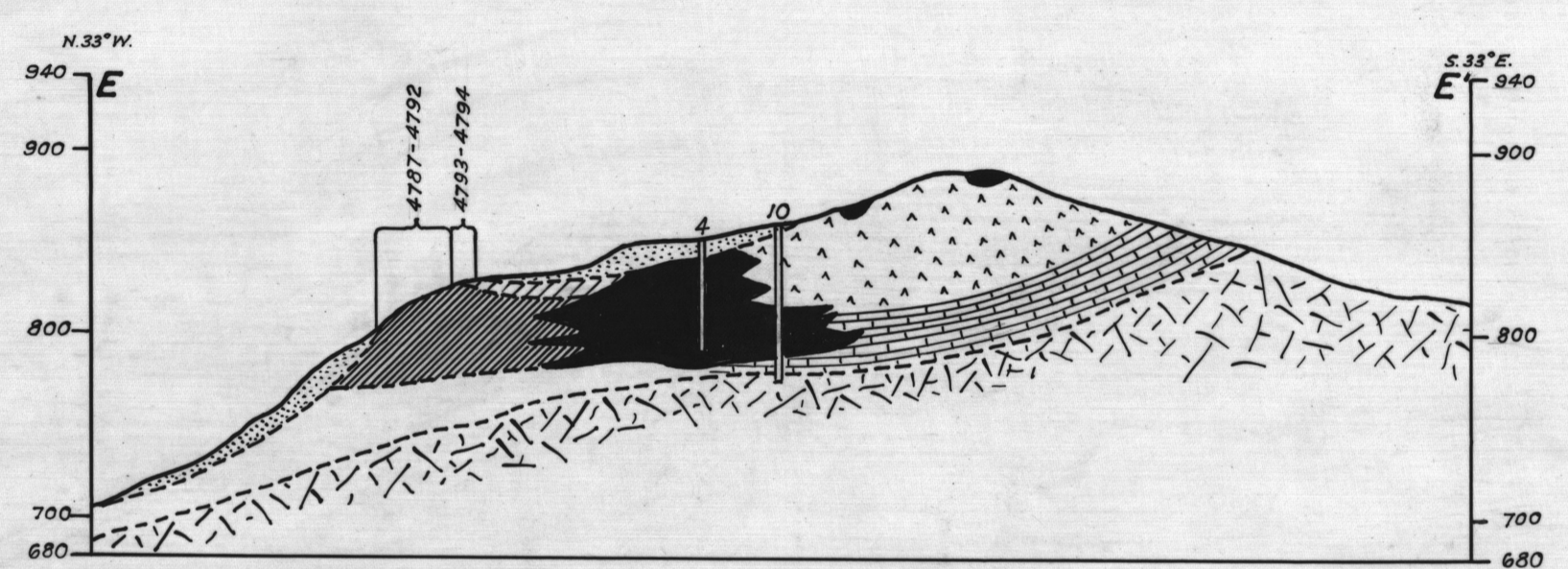
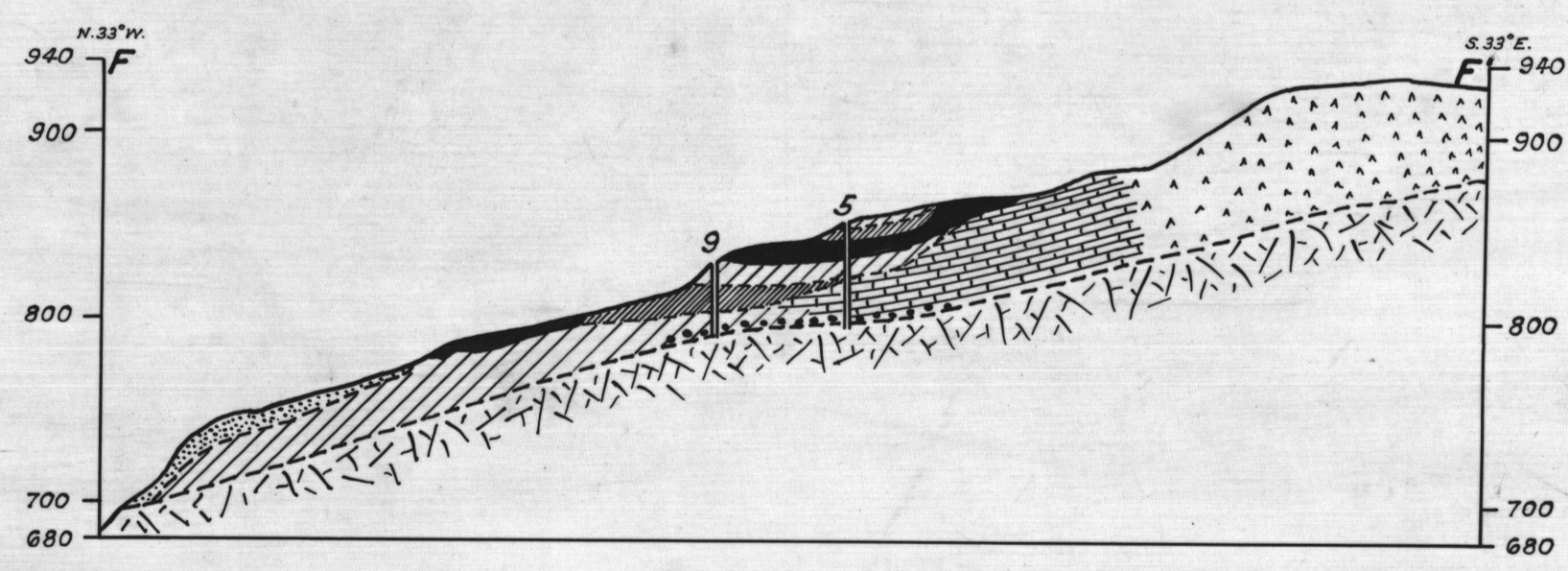


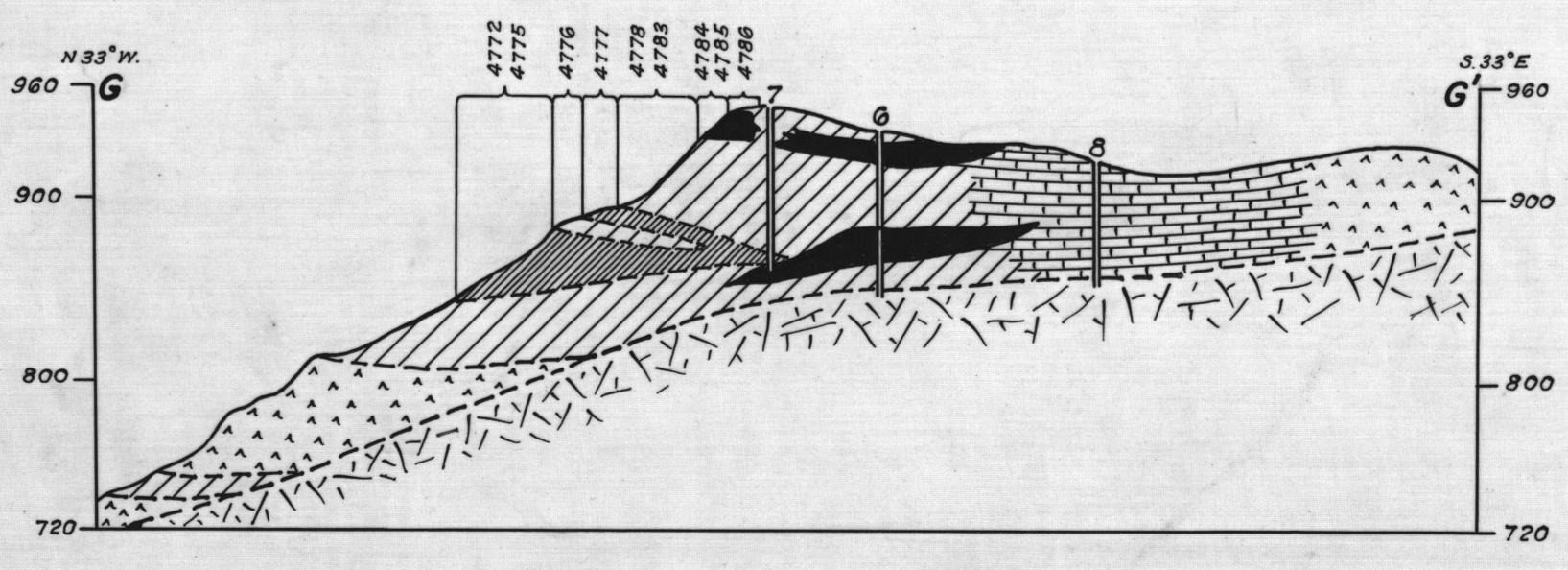
SECTION D - D' THRU D.D. HOLES 1, 2 & 3



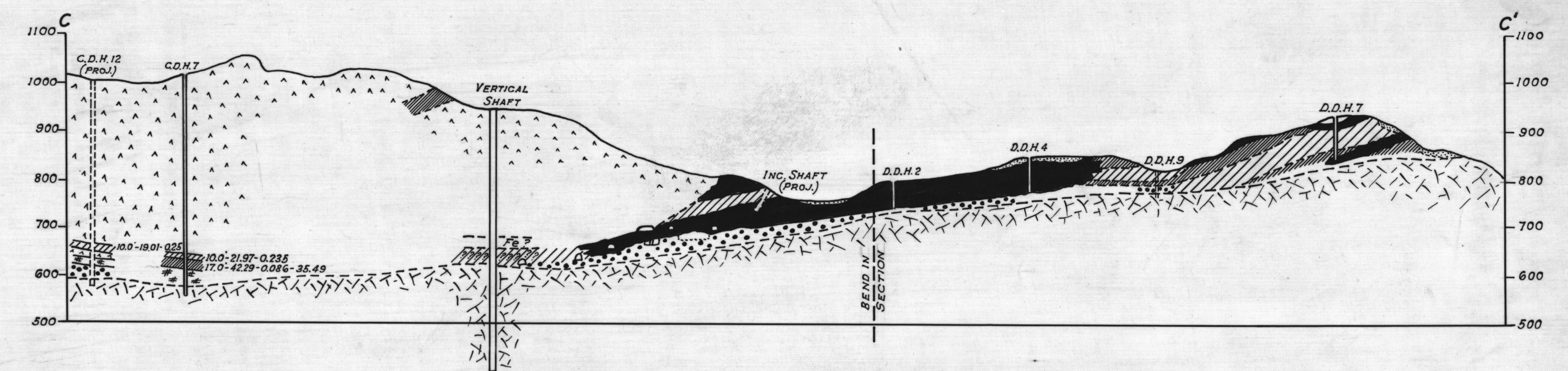
SECTION E - E' THRU D.D. HOLES 4 & 10



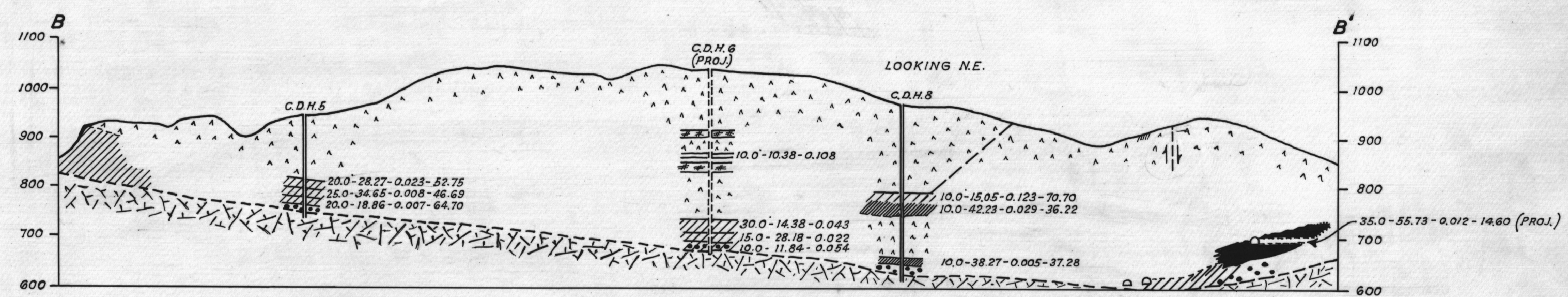
SECTION F - F' THRU D.D. HOLES 5 & 9



SECTION G - G' THRU D.D. HOLES 6, 7 & 8

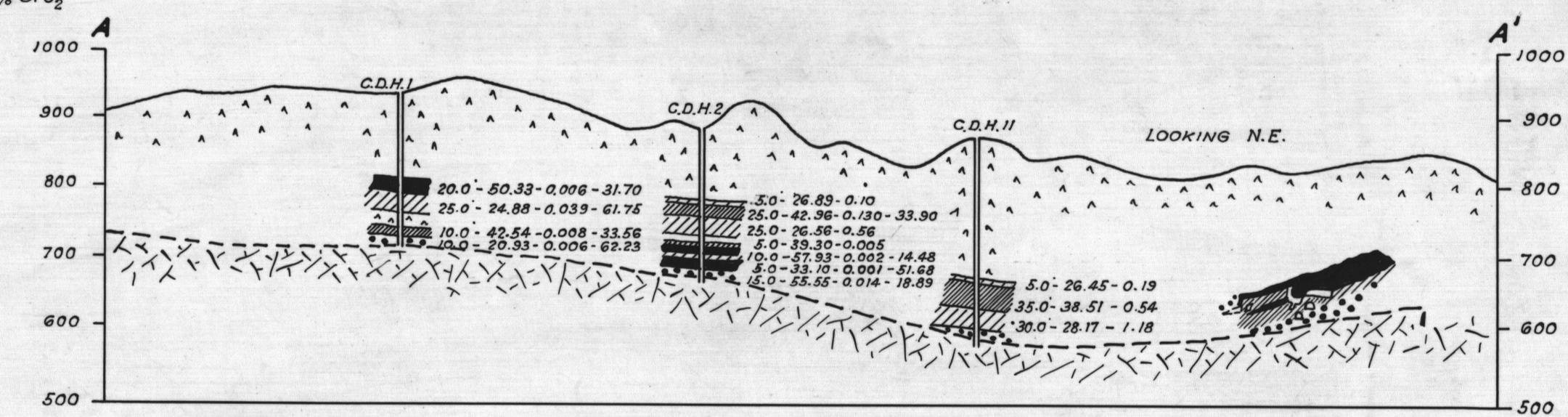


LONGITUDINAL SECTION C - C' - THRU CHURN DRILL HOLE NO. 7 & DIAMOND DRILL HOLES 2, 4, 7 & 9.



SECTION B - B' THRU CHURN DRILL HOLES NO. 5 & 8.

NOTE:
 First figure indicates length of sample.
 Second figure indicates % Fe
 Third figure indicates % Cu.
 Fourth figure indicates % SiO₂



SECTION A - A' THRU CHURN DRILL HOLES 1, 2 & 11.

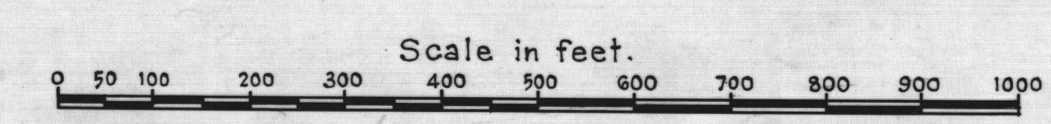
ANALYSES OF SAMPLES

Sample Location	From	To	Length	% Fe	% Cu	% SiO ₂	% S
D.D.H.1	0.0	34.8	34.8	57.48	0.012	12.95	0.187
D.D.H.2	0.0	42.0	42.0	56.70	0.014		0.054
D.D.H.3	13.5	30.8	17.3	66.40	0.013	3.36	0.050
Surface	*4795	*4799	27.0	55.35	0.030		
D.D.H.4	11.7	62.3	50.6	60.45	0.038		
Surface	*4787	*4792	40.5	42.97	0.047		
D.D.H.5	3.6	8.6	5.0	37.39	0.010		
"	8.6	18.6	10.0	51.40	0.019	19.33	0.23
"	18.6	21.3	2.7	40.52	0.051		0.24
"	28.2	32.3	4.1	42.69	0.045		
D.D.H.6	7.0	19.4	12.4	61.03	0.002		
"	49.4	68.1	18.7	56.23	0.193		
D.D.H.7	2.0	19.0	17.0	33.78	0.057		
"	19.0	74.5	55.5	8.80	0.059		
"	74.5	84.6	10.1	49.17	0.068		
Surface	*4772	*4775	26.0	45.80	0.053		
"	*4777	-	6.4	43.52	0.012		
"	*4784	*4785	15.5	53.09	0.009		
D.D.H.9	16.5	26.5	10.0	37.59	0.098		
D.D.H.10	43.0	67.0	24.0	50.34	0.083		

LEGEND

- Iron ore, 50% + Fe
- Weak iron mineralization, 35% - 50% - Fe
- Very weak iron mineralization, 35% - Fe
- Gneiss
- Siliceous breccia
- Schist
- Limestone
- Rhyolite schist.
- Alluvium, talus, sand

NOTE:
 The data herein recorded is based in part upon confidential information furnished by the United States Bureau of Mines and therefore not for public distribution.



The A.T. & S.F. Ry., Co.
 Department of Mineral Resources
 GEOLOGICAL CROSS SECTIONS
 New Planet Copper Mining Co.,
 IRON ORE DEPOSIT
 Yuma County
 Arizona
 Oct. 1944