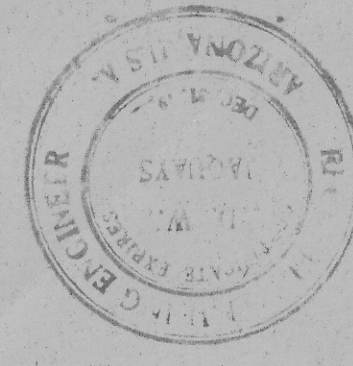
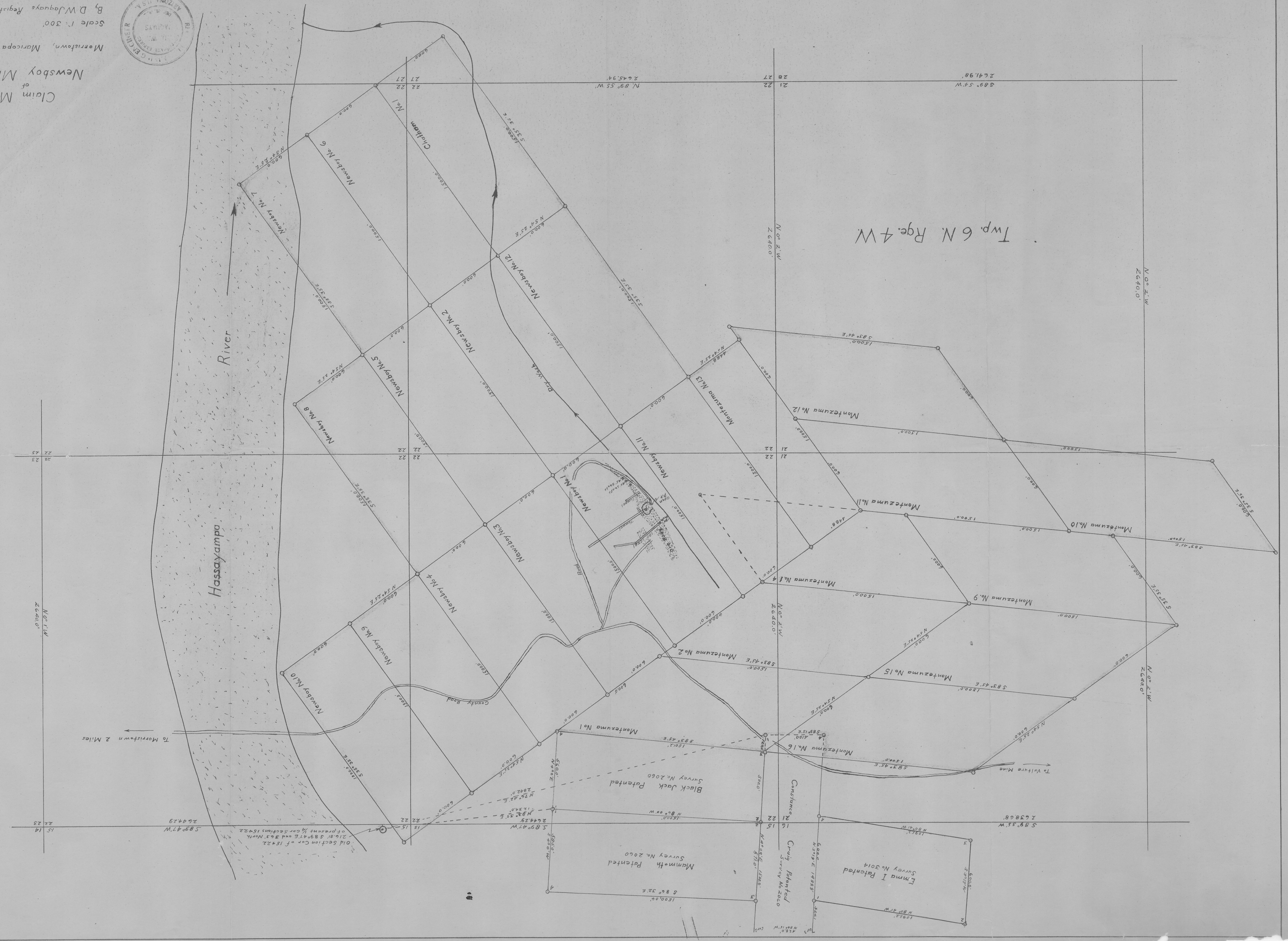


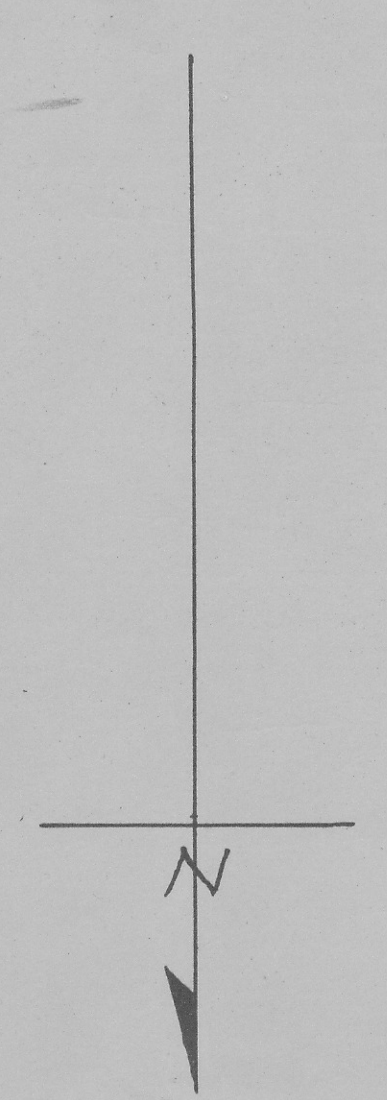
Claim Map
of
Newsboy Mines
Morristown, Maricopa Co., Arizona
July 1947
Scale 1" = 300'
By D. W. Waquays, Registered Mining Engineer



Twp. 6 N. Rge. 4 W



22 23
22 24
22 25
22 26
22 27
22 28
22 29
22 30
22 31
22 32
22 33
22 34
22 35
22 36
22 37
22 38
22 39
22 40
22 41
22 42
22 43
22 44
22 45
22 46
22 47
22 48
22 49
22 50
22 51
22 52
22 53
22 54
22 55
22 56
22 57
22 58
22 59
22 60
22 61
22 62
22 63
22 64
22 65
22 66
22 67
22 68
22 69
22 70
22 71
22 72
22 73
22 74
22 75
22 76
22 77
22 78
22 79
22 80
22 81
22 82
22 83
22 84
22 85
22 86
22 87
22 88
22 89
22 90
22 91
22 92
22 93
22 94
22 95
22 96
22 97
22 98
22 99
22 100



To Morristown 2 Miles

22 11
22 12
22 13
22 14
22 15
22 16
22 17
22 18
22 19
22 20
22 21
22 22
22 23
22 24
22 25
22 26
22 27
22 28
22 29
22 30
22 31
22 32
22 33
22 34
22 35
22 36
22 37
22 38
22 39
22 40
22 41
22 42
22 43
22 44
22 45
22 46
22 47
22 48
22 49
22 50
22 51
22 52
22 53
22 54
22 55
22 56
22 57
22 58
22 59
22 60
22 61
22 62
22 63
22 64
22 65
22 66
22 67
22 68
22 69
22 70
22 71
22 72
22 73
22 74
22 75
22 76
22 77
22 78
22 79
22 80
22 81
22 82
22 83
22 84
22 85
22 86
22 87
22 88
22 89
22 90
22 91
22 92
22 93
22 94
22 95
22 96
22 97
22 98
22 99
22 100

Old Section Cop. of 15722
210.81 S 89° 41' E and 363 North
of present 1/2 Con. Sections 15722
589° 47' W 2644.29

Mammoth Patented
Survey No. 2000

Black Jack Patented
Survey No. 2000

Emma I Patented
Survey No. 3014

Crug Patented
Survey No. 2000

Constantine
Survey No. 2000

589° 53' W 2638.68

589° 41' W 2644.29

583° 45' E 1500.00

583° 45' E 1500.00

583° 45' E 1500.00

583° 45' E 1500.00

583° 45' E 1500.00

583° 45' E 1500.00

583° 45' E 1500.00

583° 45' E 1500.00

583° 45' E 1500.00

583° 45' E 1500.00

583° 45' E 1500.00

583° 45' E 1500.00

583° 45' E 1500.00

583° 45' E 1500.00

583° 45' E 1500.00

583° 45' E 1500.00

583° 45' E 1500.00

583° 45' E 1500.00

583° 45' E 1500.00

583° 45' E 1500.00

583° 45' E 1500.00

583° 45' E 1500.00

583° 45' E 1500.00

583° 45' E 1500.00

583° 45' E 1500.00

583° 45' E 1500.00

583° 45' E 1500.00

583° 45' E 1500.00

583° 45' E 1500.00

583° 45' E 1500.00

583° 45' E 1500.00

583° 45' E 1500.00

583° 45' E 1500.00

583° 45' E 1500.00

583° 45' E 1500.00

583° 45' E 1500.00

583° 45' E 1500.00

583° 45' E 1500.00

583° 45' E 1500.00

583° 45' E 1500.00

583° 45' E 1500.00

583° 45' E 1500.00

583° 45' E 1500.00