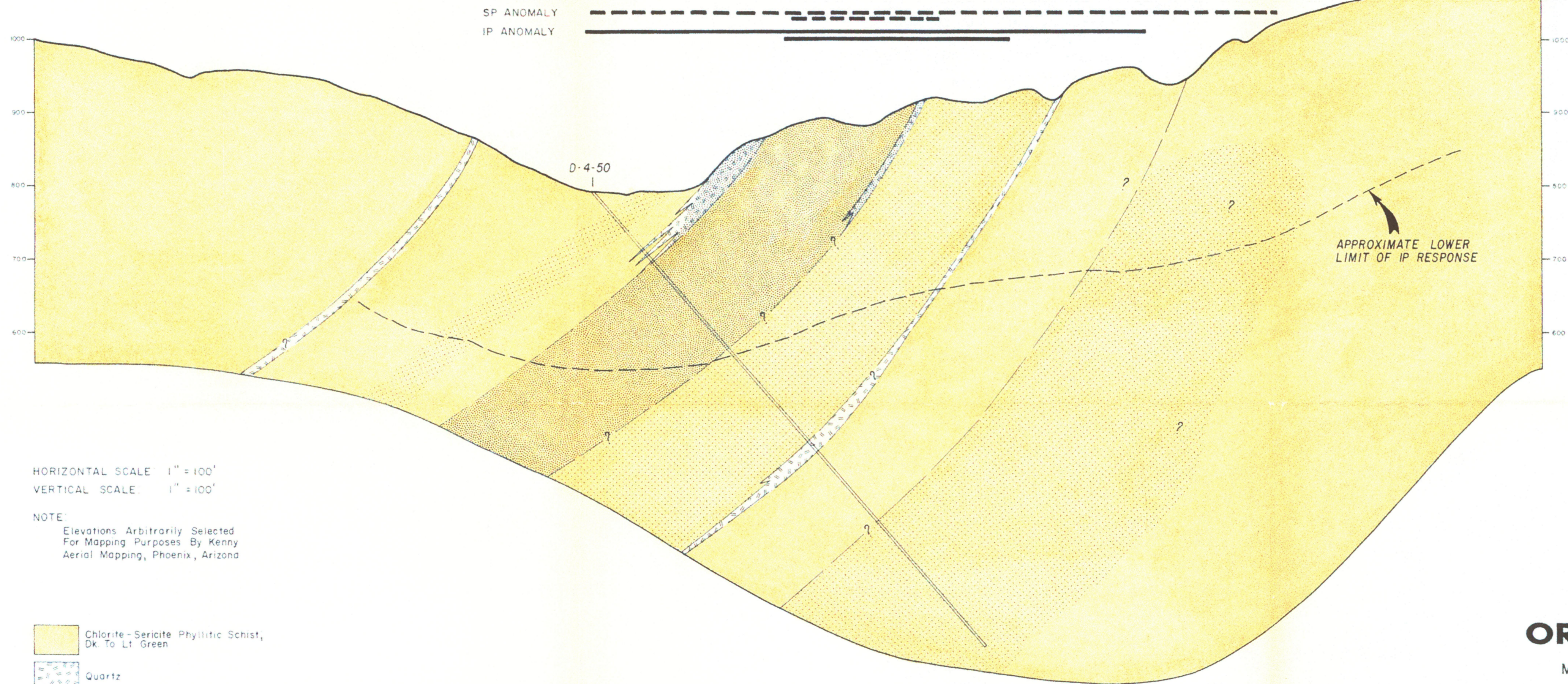


**B**  
(NORTHWEST)

**B'**  
(SOUTHEAST)



HORIZONTAL SCALE 1" = 100'  
VERTICAL SCALE 1" = 100'

NOTE  
Elevations Arbitrarily Selected  
For Mapping Purposes By Kenny  
Aerial Mapping, Phoenix, Arizona



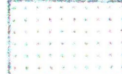

-  Chlorite-Sericite Phyllitic Schist,  
Dk. To Lt. Green
-  Quartz
-  Weakly Disseminated Pyrite (<3%)
-  Moderately Disseminated Pyrite (<8%)

PLATE 5  
**ORIZABA MINE**

MARICOPA COUNTY, ARIZONA

CROSS SECTION B-B'  
(Looking Easterly)

R.J. LICKUS

AUG, 1970

ADMMR 0230-005