

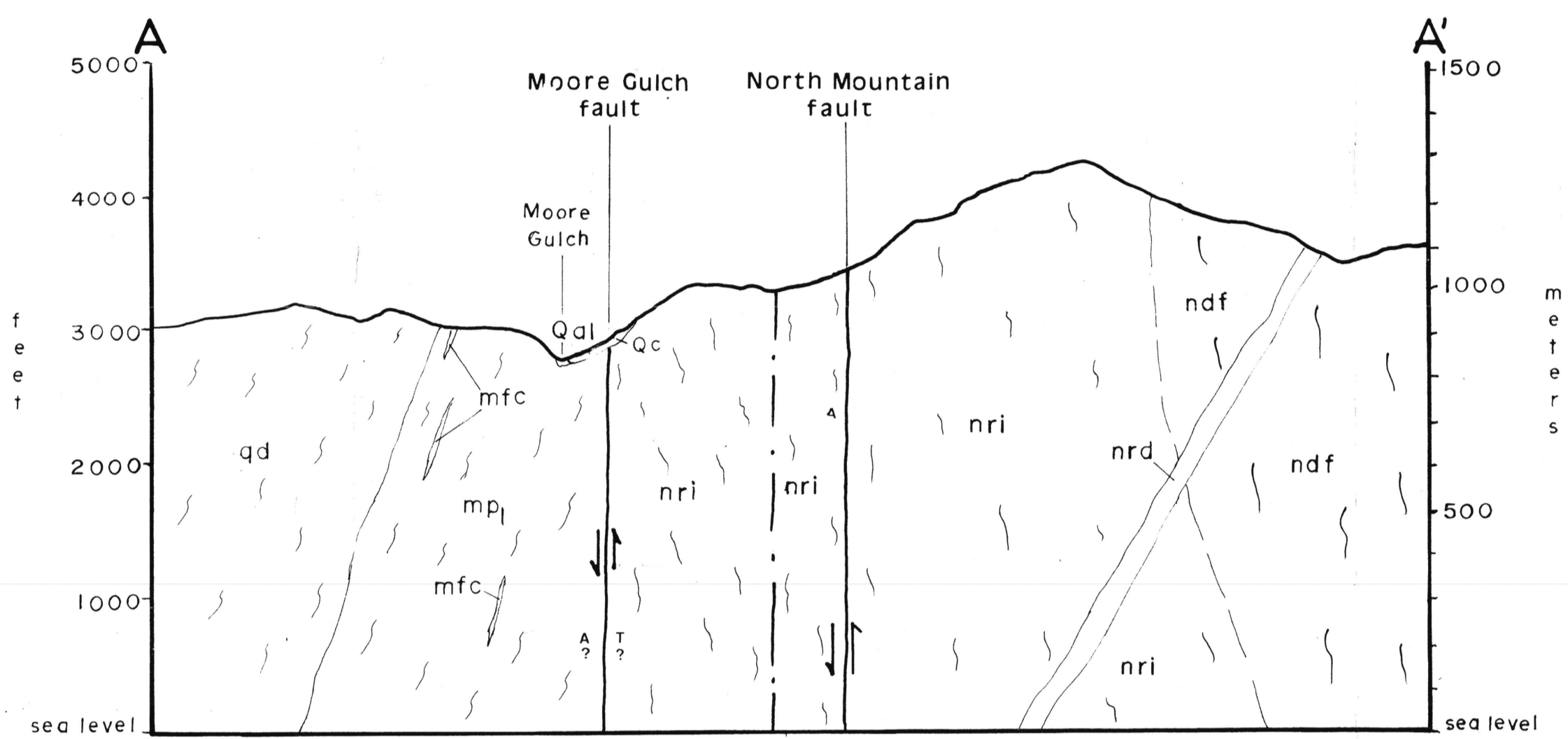
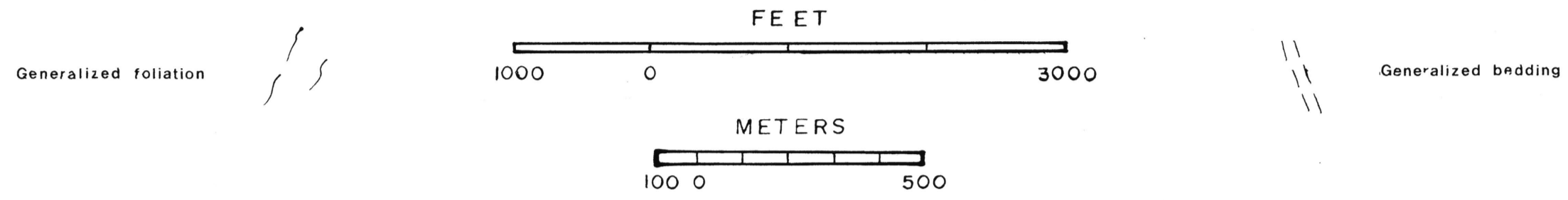
GEOLOGIC CROSS SECTIONS OF THE SOUTHWESTERN PART OF THE NEW RIVER MOUNTAINS, ARIZONA

STEPHEN R. MAYNARD

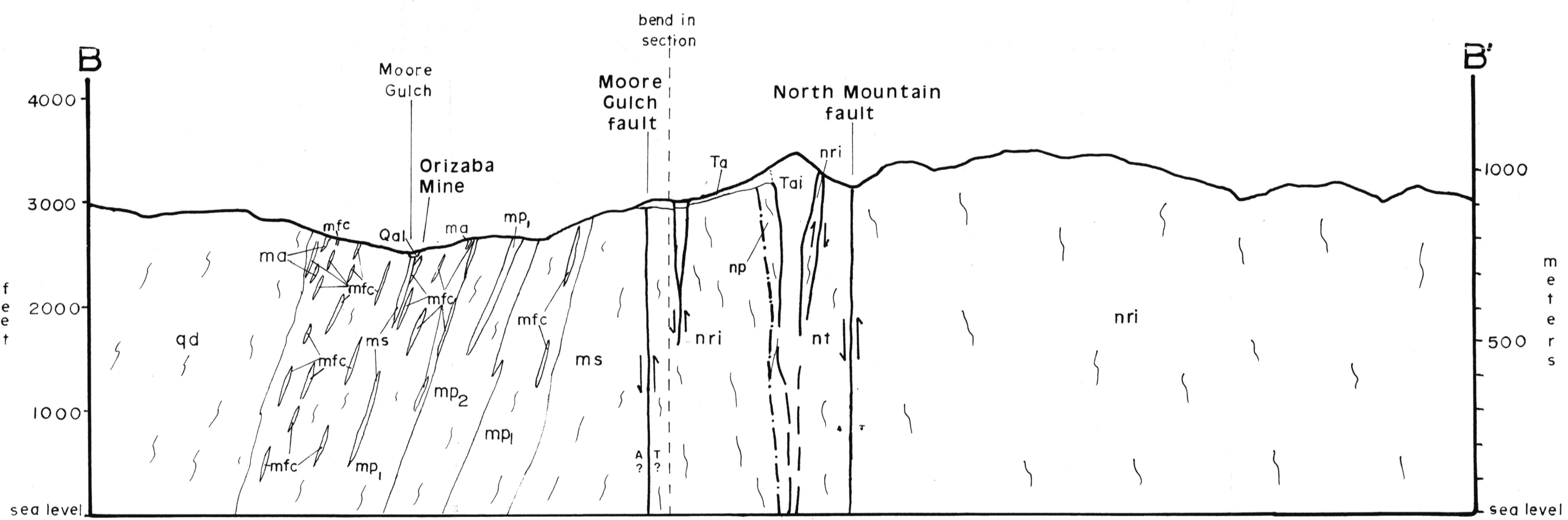
1985

Dept. of Geology, Univ. of New Mexico

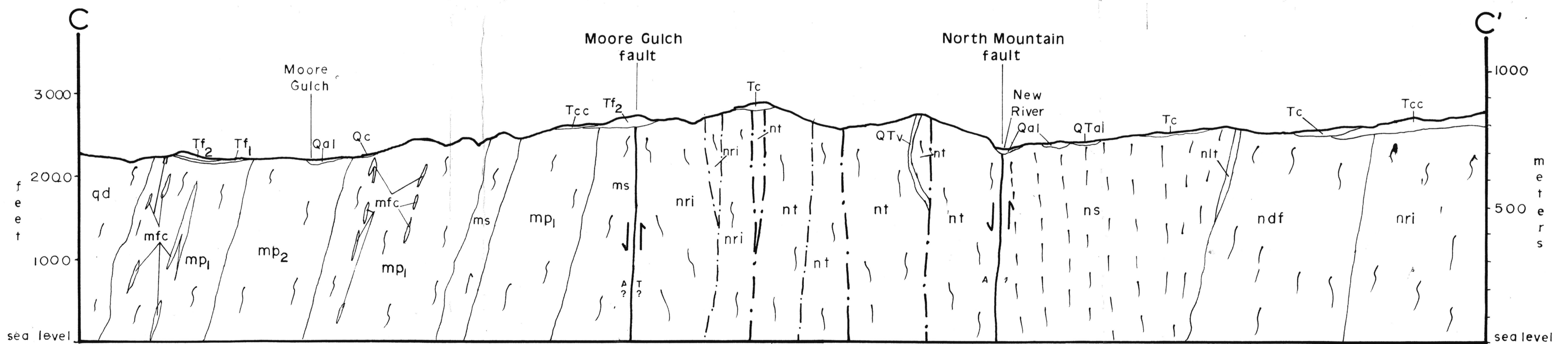
GEOLOGIC EXPLANATION ON FIGURE 4



Cross section A-A'



Cross section B-B'



Cross section C-C'