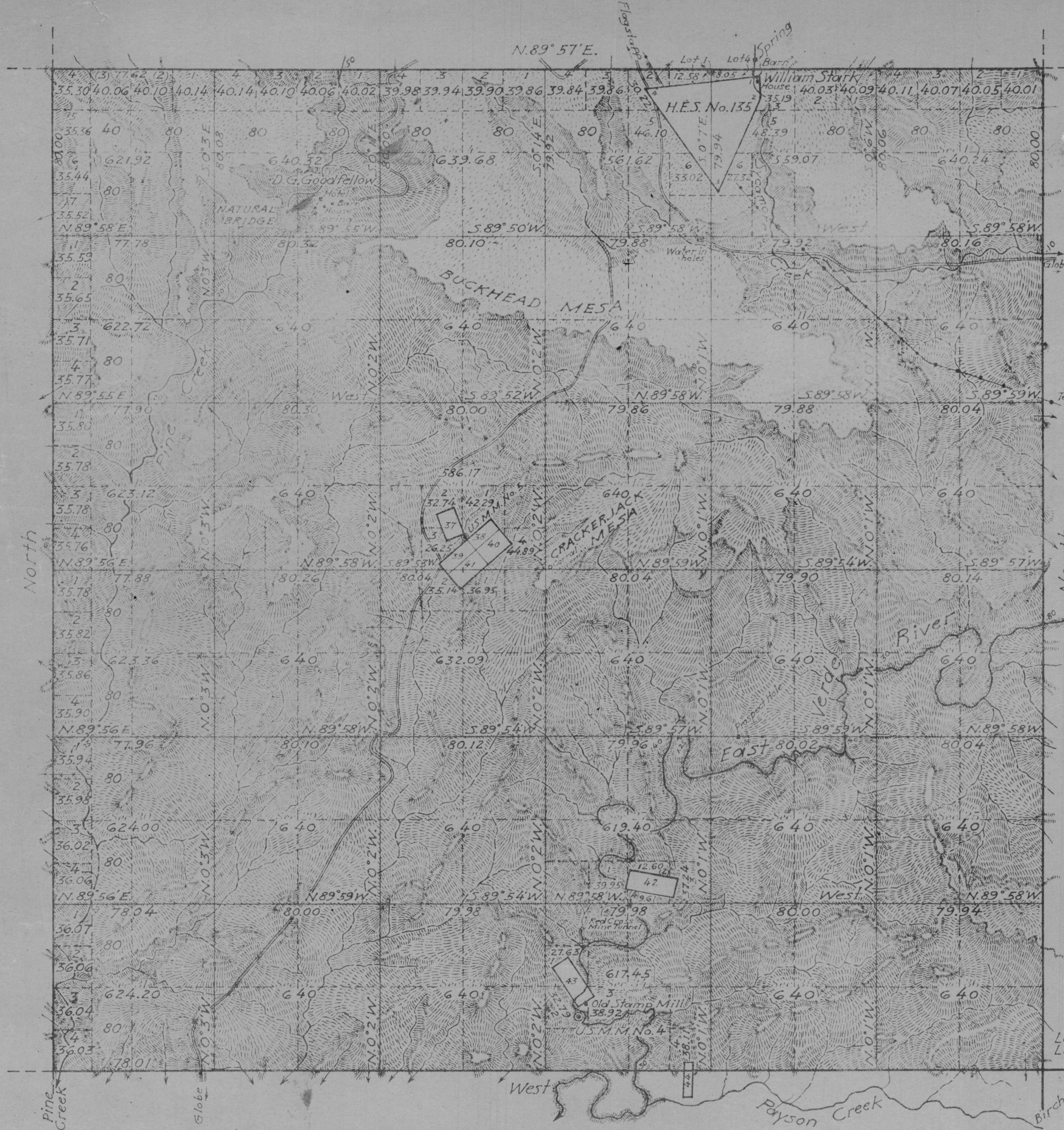


Township N^o 11 North Range N^o 9 East, Gila and Salt River Meridian, Arizona



Patented Mining Claims

No.	Name	Sur.	Area
37	Summit	783	12.40
38	Connection No. 2	840	8.72
39	Connection No. One	839	11.02
40	Long Tonto	837	13.08
41	Contact	838	16.53
42	Liberty	777	20.66
43	Gowan	778	20.66
44	American	784	1.89

Homestead Entry

No.	Entryman	Date of Patent
135	William Stark	Oct. 11, 1917.

Note: Indications of gold, silver and copper are found in S.E. portion of Township.

Areas in Acres

Public Land	22675.36
Indian Reservation	
Indian Allotments	
Mineral Claims	104.96
Water Surface	
H.E.S. No. 135	158.74
Total Area	22939.06

Lat. 34° 14' 46" N.
 Long. 111° 22' 35" W.
 Scale 40 Chains to an inch
 Mean Magnetic Declination 14° 30' E.

Surveys Designated	By Whom Surveyed	Group			Amount of Surveys	When Surveyed	
		No.	Date	Sts.		Begin	Completed
N. Bay	Surv. Sidney E. Bout,	91	Feb. 26, 1919.	Complete	Sept. 11 - Oct. 27, 1919.		
E.	U.S.C.E.	"	"	"	Sept. 9 - Oct. 28, 1919.		
S.	"	"	"	"	Sept. 15 - 25, 1919.		
W.	"	"	"	"	Sept. 25 - Oct. 21, 1919.		
Subdivisions	"	"	"	"	Sept. 13 - Oct. 23, 1919.		

The above map of Township No. 11 North Range No. 9 East of the Gila & Salt River Meridian, Arizona is strictly conformable to the field notes of the survey thereof on file in this office, which have been examined and approved.

U.S. Surveyor General's Office
 Phoenix, Ariz. April 22, 1920.

Frank D. Frost
 Surveyor General.