

EIGHTY FIVE CLAIM

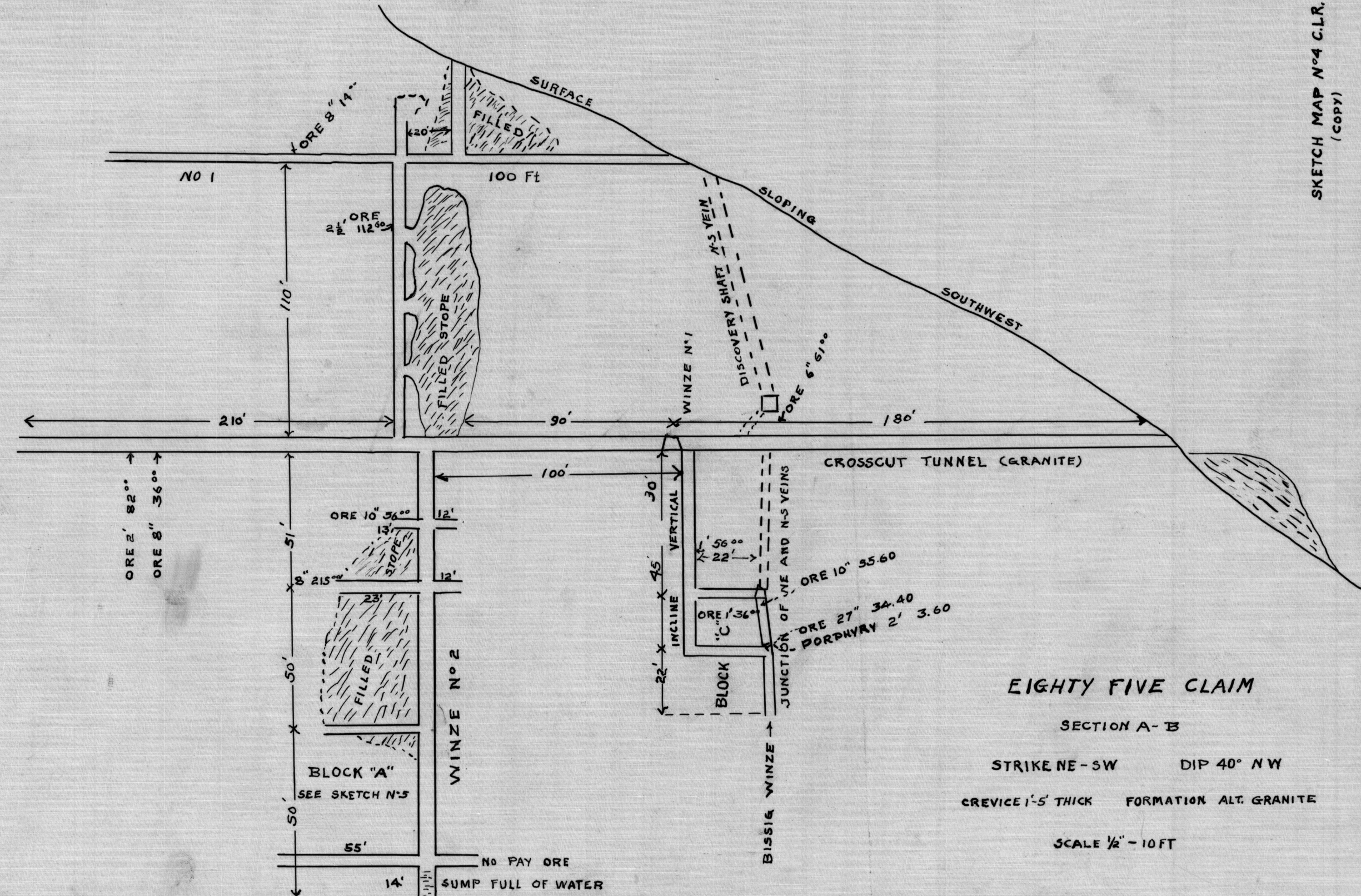
VERTICAL SECTION C-D

NORTH-SOUTH VEIN (STR N-5) DIP 40° WEST

CREVICE 1-4 FT THICK

SCALE 1/2" = 10 FT

SKETCH MAP N°5 C.L.R.
(COPY)



EIGHTY FIVE CLAIM

SECTION A-B

STRIKE NE-SW DIP 40° NW

CREVICE 1'-5" THICK FORMATION ALT. GRANITE

SCALE 1/2" = 10 FT

SKETCH MAP N°4 C.L.R.
(COPY)