

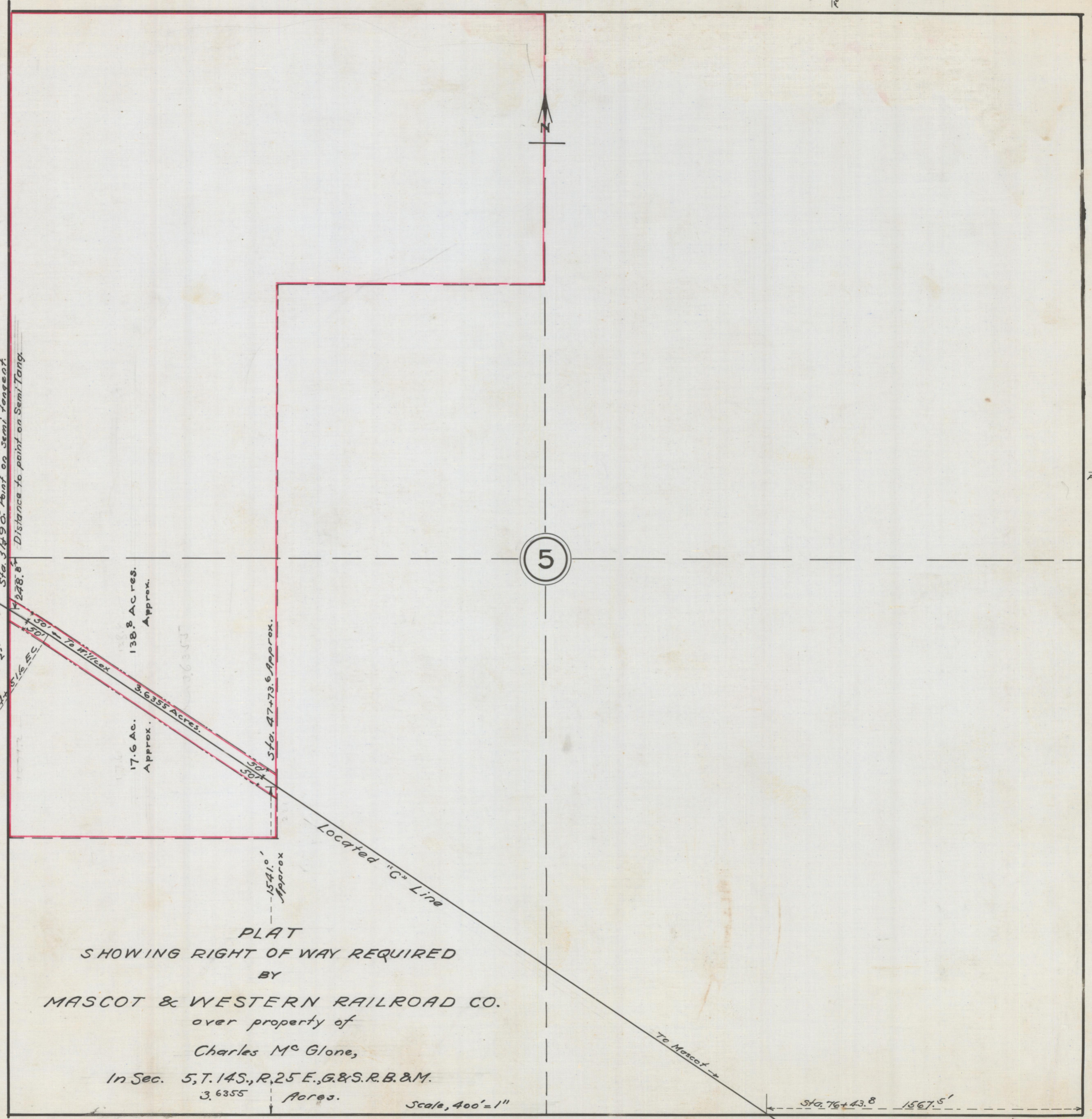
Trim prints on this line

FOLD

FOLD PRINTS HERE

FOLD

Bind Prints Here



6001.1  
 Sta. 3149.0 Point on semi-tangent  
 Distance to point on Semi-Tang.  
 1228.8  
 31443.3 BC.  
 1000' R.  
 Angle 90.02  
 S.T. 151.70 - 02  
 327.516 EC

17.6 Ac.  
 Approx.  
 138.8 Ac. res.  
 Approx.  
 3.6355 Acres.

Sta. 47+73.6 Approx.

Located "C" Line

1541.0  
 Approx

5

To Mascot

Sta. 76+43.8 1567.5'

Scale, 400' = 1"

PLAT  
 SHOWING RIGHT OF WAY REQUIRED  
 BY  
 MASCOT & WESTERN RAILROAD CO.  
 over property of  
 Charles Mc Glone,  
 In Sec. 5, T. 14S., R. 25 E., G. & S. R. B. & M.  
 3.6355 Acres.

ADM MR 0211-002