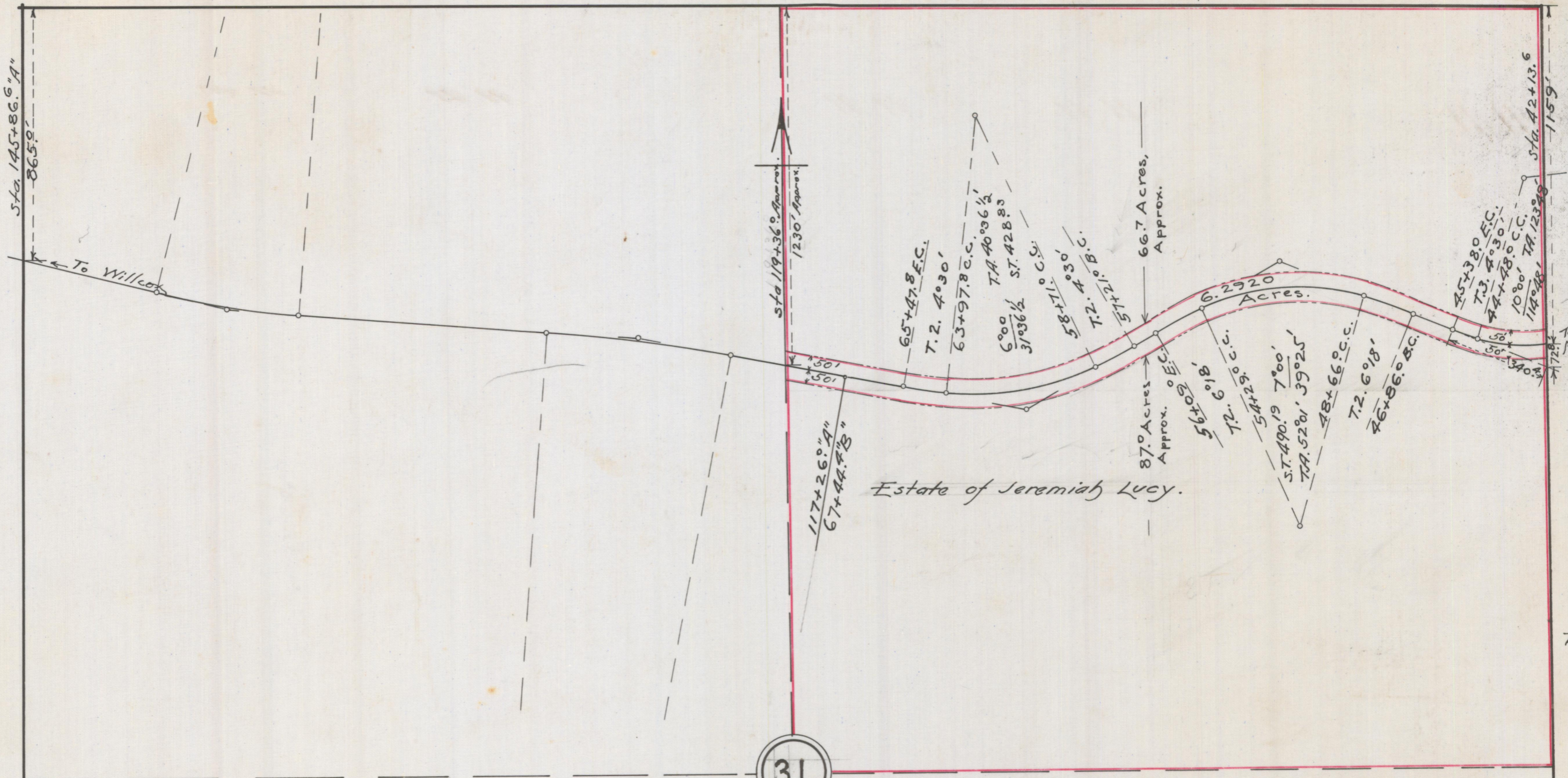


Trim Prints on this line

FOLD

TRIM PRINTS HERE
FOLD PRINTS HERE



31

FOLD

PLAT
 SHOWING RIGHT OF WAY REQUIRED
 BY
 MASCOT & WESTERN RAILROAD CO.
 over property of
 Jeremiah Lucy, deceased.
 In Sec. 31, T. 14S., R. 27 E., G. & S. R. B. & M.
 6.2920 Acres.

SCALE - 400' = 1"

FOLD

ADMMR 0211-008