

R-13 - 12-W

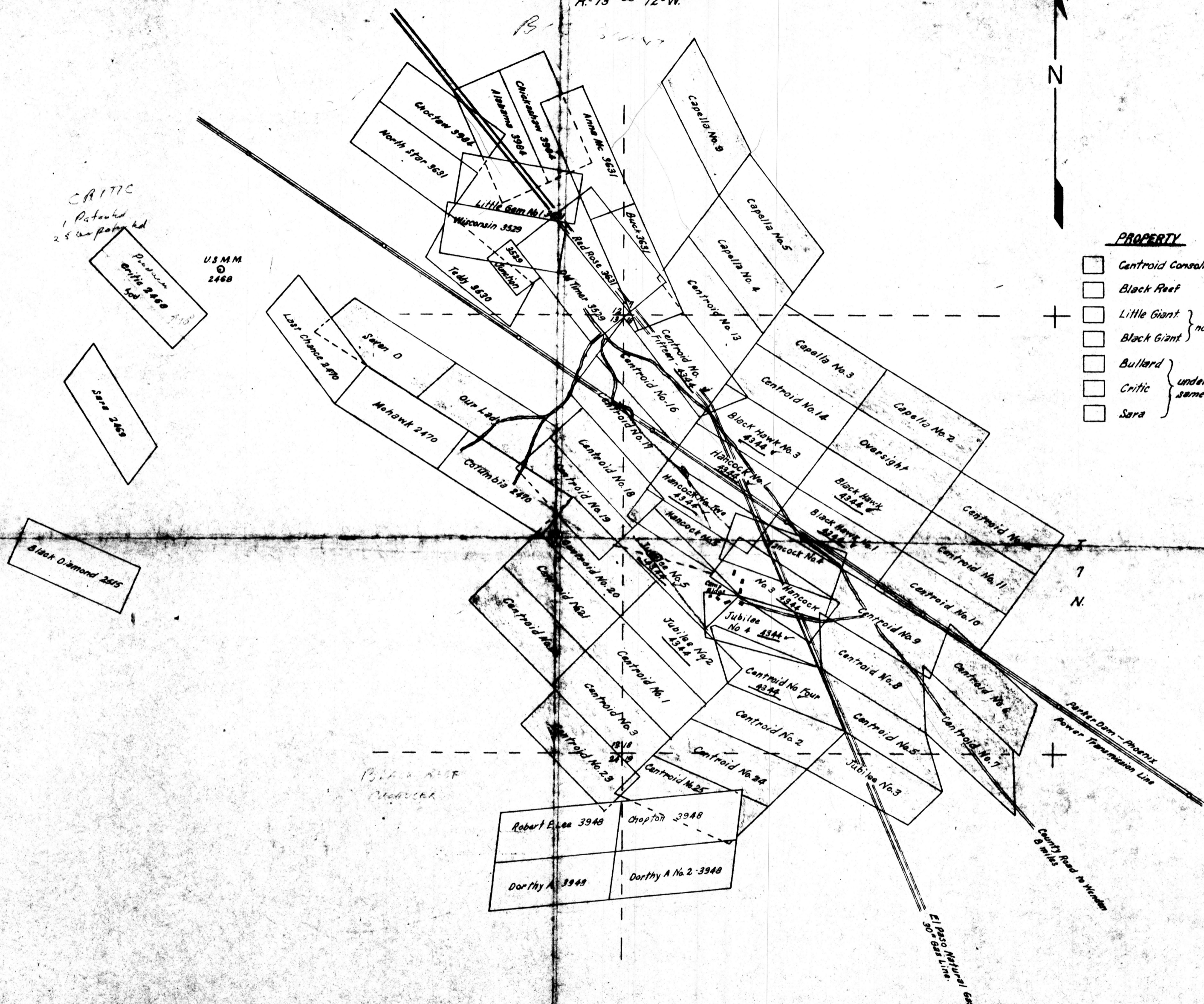


CRITIC  
1 Patented  
2 5 unpatented

U.S.M.M.  
2468

**PROPERTY**

- Centroid Consolidated
  - Black Reef
  - Little Giant
  - Black Giant
  - Bullard
  - Critic
  - Sara
- } now one owner
- } under lease to same group.



ELLSWORTH MINING DIST.  
 YUMA COUNTY, ARIZONA  
 SCALE: 1 IN = 1000 FT.  
 DEPT. 1957

ADM MR 0072-029