

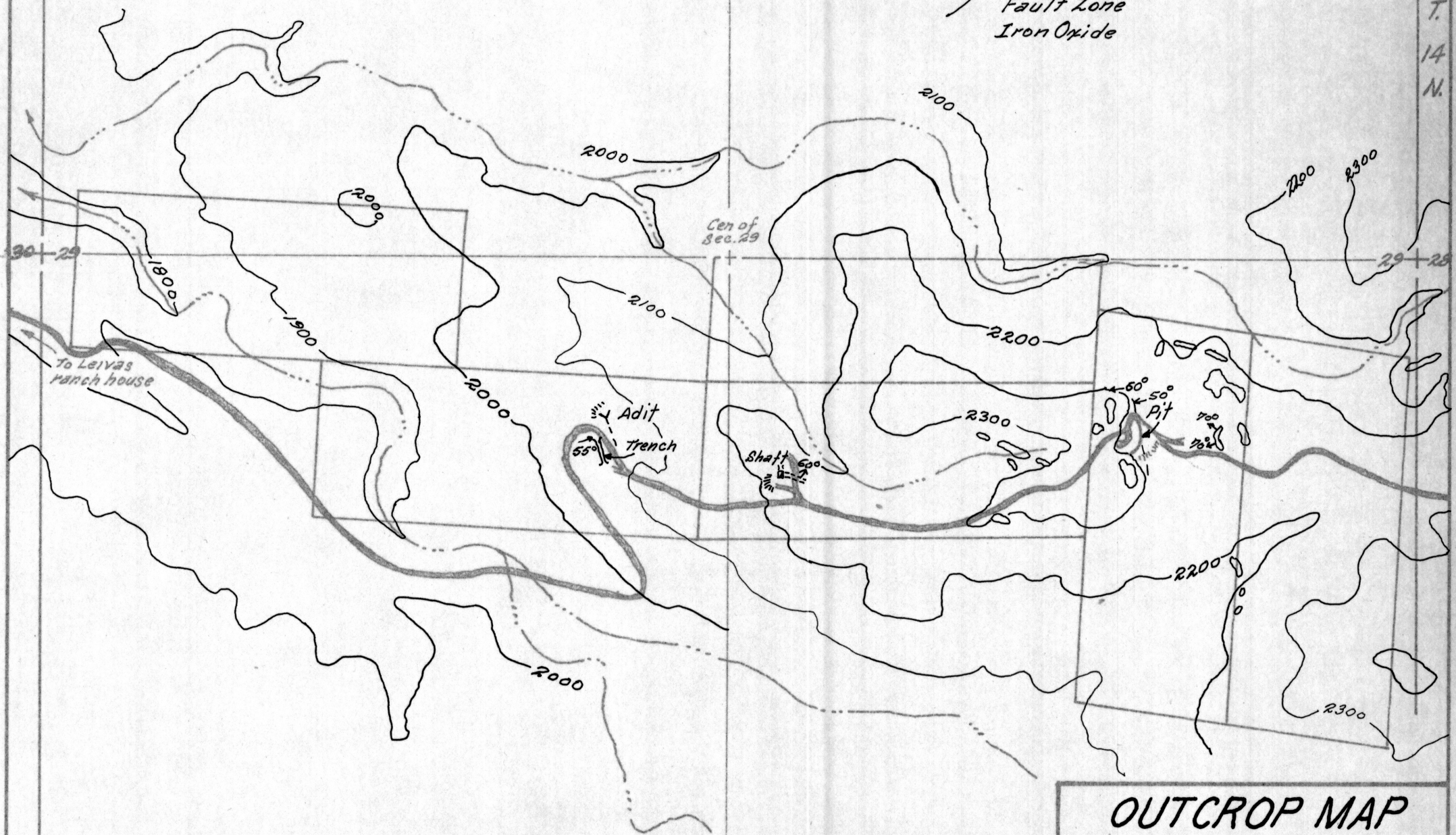
19 20
30 29

20
29

20 21
29 28

NOTE

- Outcrop, predominantly white "bull" quartz.
- Outcrop, Pegmatite, white quartz, feldspars, biotite mica, some iron oxide, some columbite-tantalite.
- / Fault Zone
- Iron Oxide



OUTCROP MAP
 LOST MINE GROUP
 Mohave County, Arizona
 Scale: 1" = 500ft.
 Jan. 1976
 R.E. Mieritz
 MAP No. _____

30 29
31 32

29
32

R. 12W.

ADMMR 0069-005