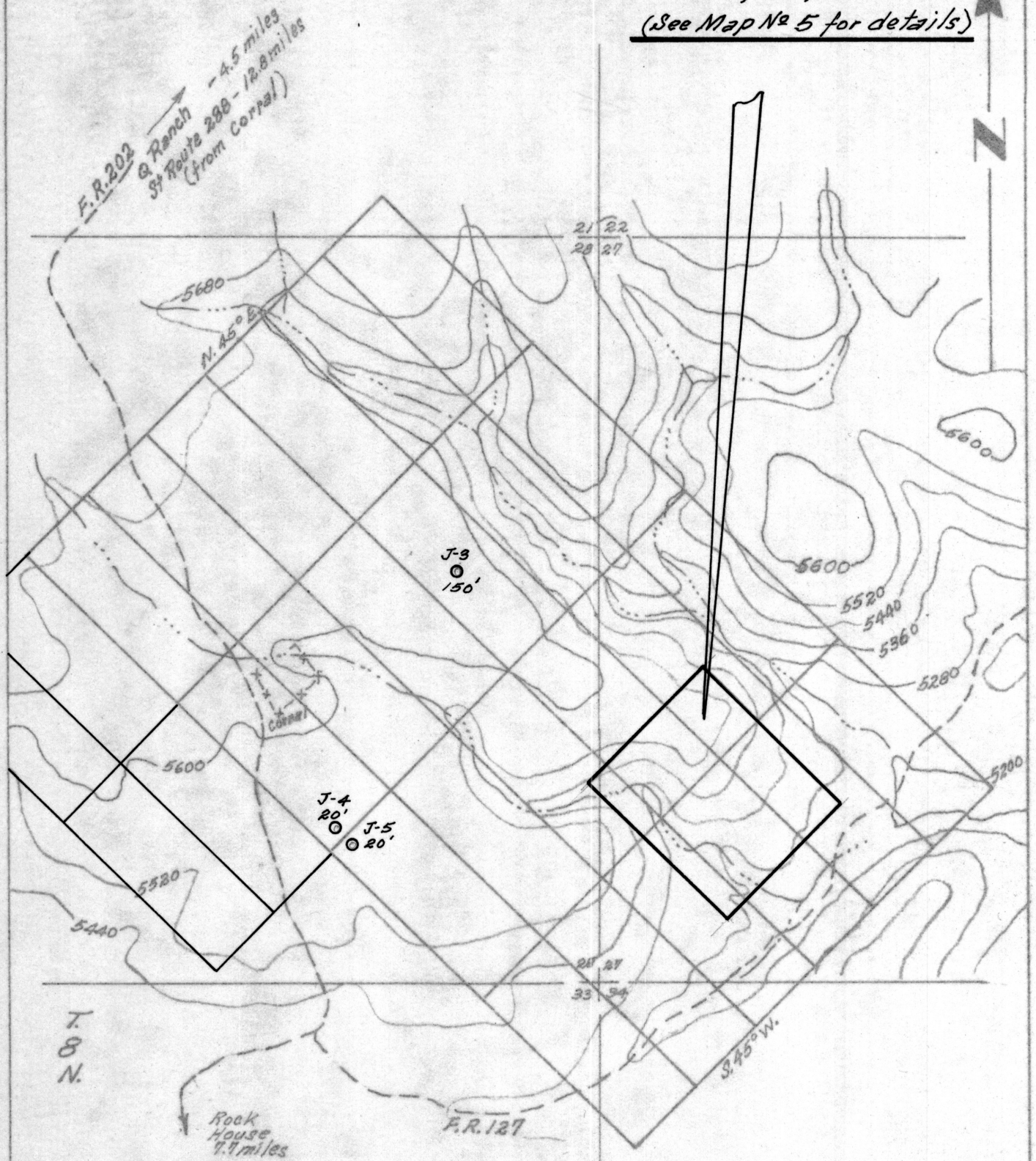


Area of Exploration
(See Map No 5 for details)



NOTE
Claim outline taken from Map by
Harvey W. Smith, U. S. Mineral
Surveyor, dated January 15, 1976

JAY URANIUM CLAIMS
Fluorine Mining District
Gila County, Arizona
SCALE: 1" = 1000 ft.
March, 1976 R. E. Mieritz
MAP No.

ADMM R0167-003