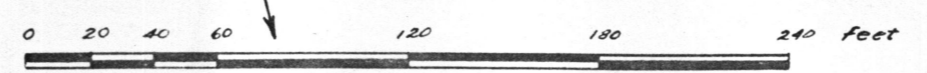




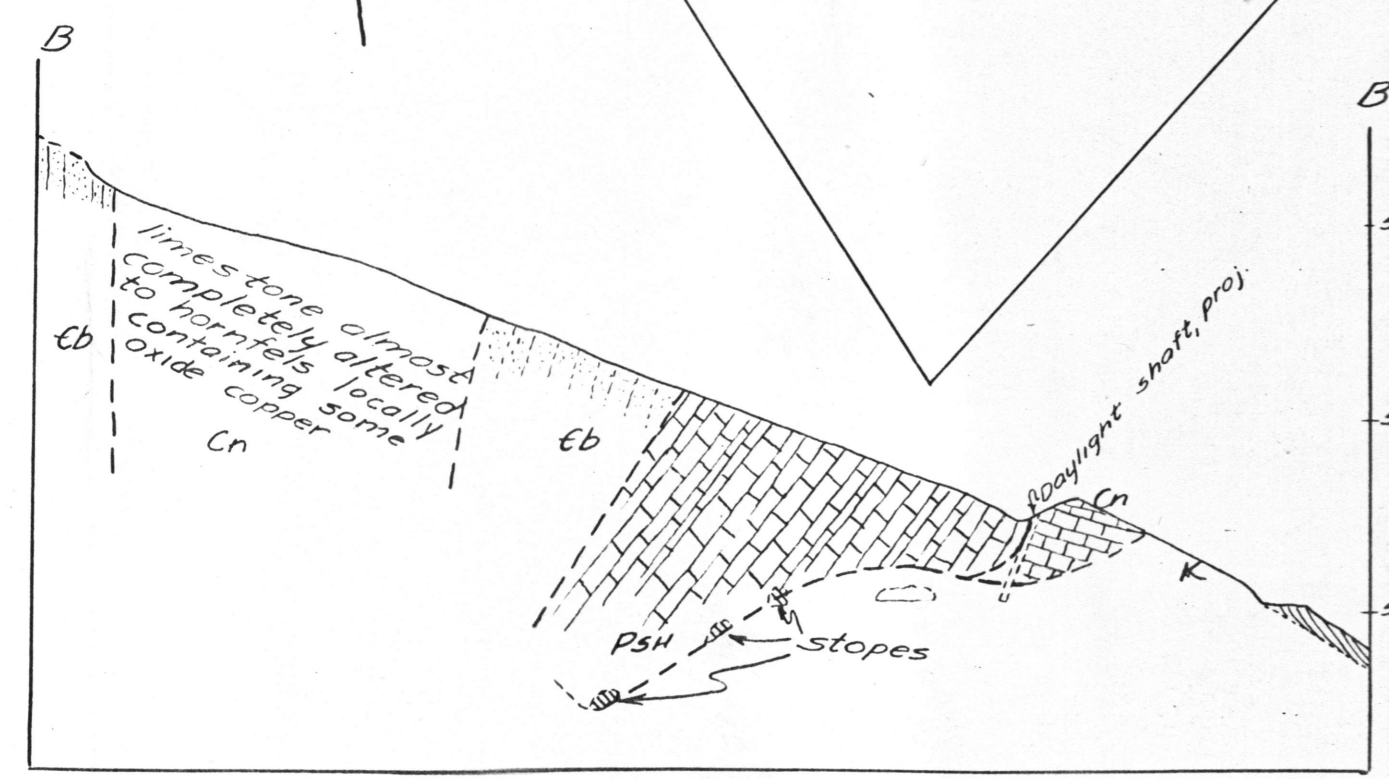
EXPLANATION

- CRET. Arkose
- UNCONFORMITY
- PERMIAN Snyder Hill formation of Stoyanow
- PERMIAN 'Lower Manzano' beds
- PENN. Naco limestone (limestone and hornfels)
- CAMBRIAN Bolsa quartzite
- Fault, dashed where location is uncertain
- Shaft, raise, winze
- Strike and dip of bedding
- Underground workings and dump
- Stopped areas
- Open cuts

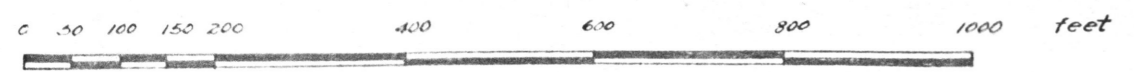
Note: underground base from map by E.B. Corbet, revised by U.S.G.S.



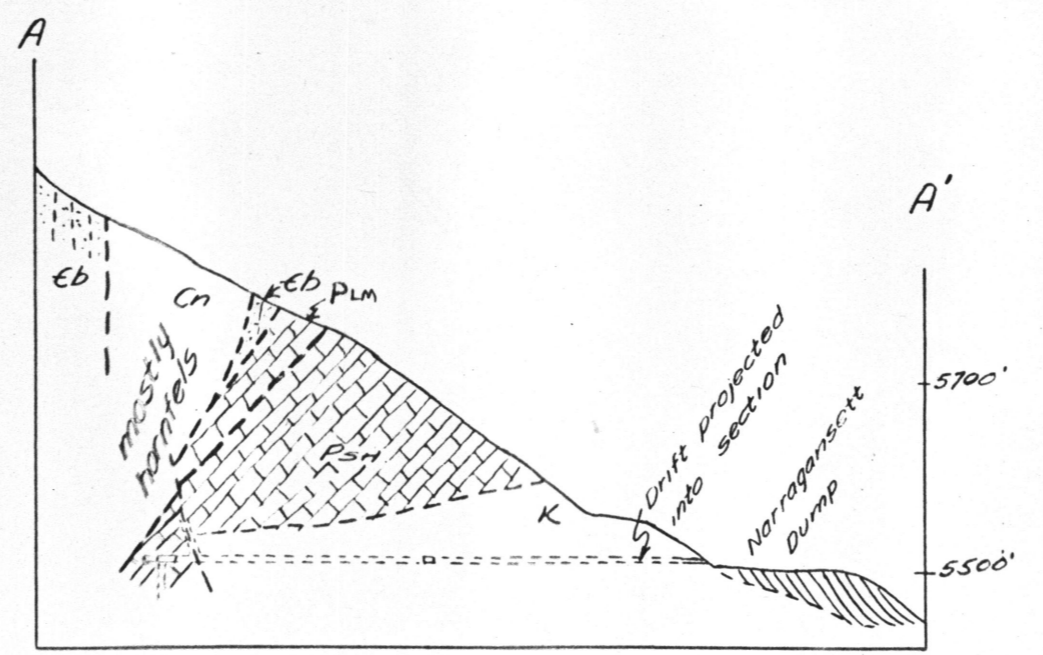
scale: 1/720



SECTION B-B'



scale: 1/2400
datum assumed



SECTION A-A'

UNITED STATES GEOLOGICAL SURVEY
GENERALIZED GEOLOGIC AND TOPOGRAPHIC MAP
OF THE AREA ADJACENT TO THE
NARRAGANSETT MINE
HELVETIA MINING DISTRICT, PIMA COUNTY, ARIZONA
GEOLOGY BY: S.C. Creasey and G.L. Quick U.S.G.S.
TOPOGRAPHY BY: G.L. Quick U.S.G.S.
MARCH 1943