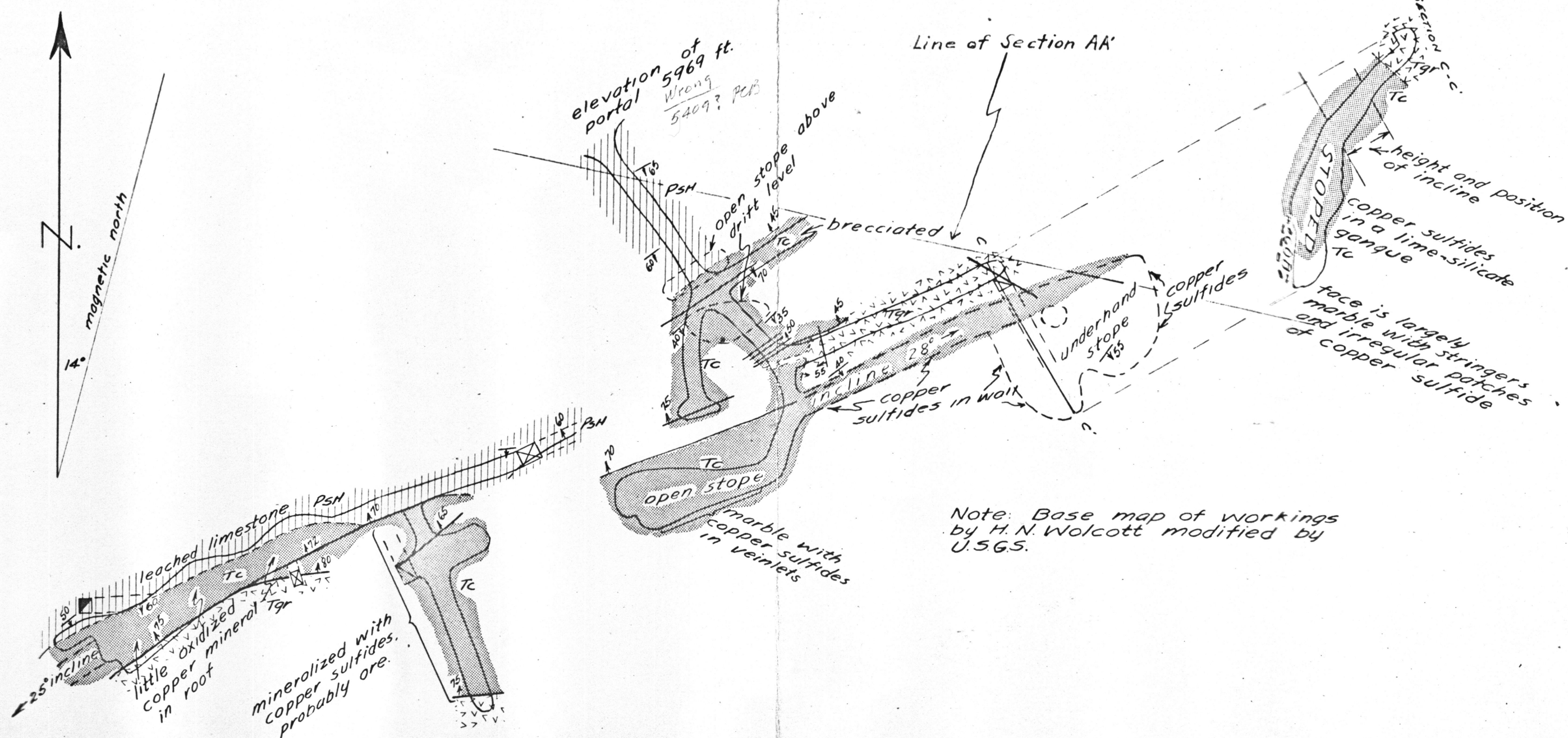


0 100 200 400 600 feet

scale: 2400

Contour interval 25 ft.
datum assumed

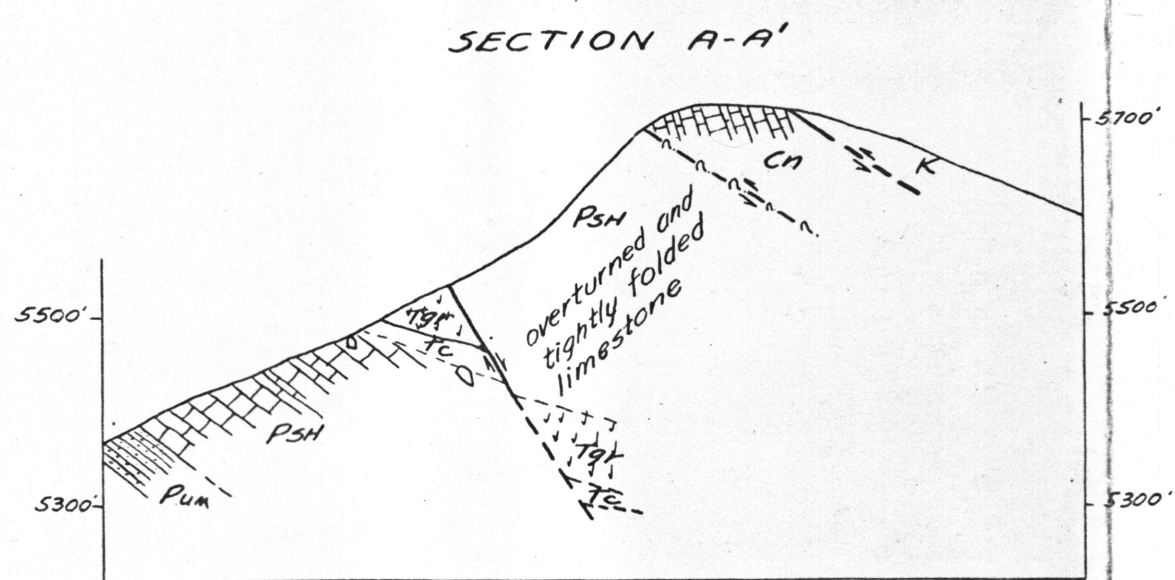


Note: Tape and Brunton survey by U.S.G.S.

0 10 20 30 60 90 120 feet

scale: 3150

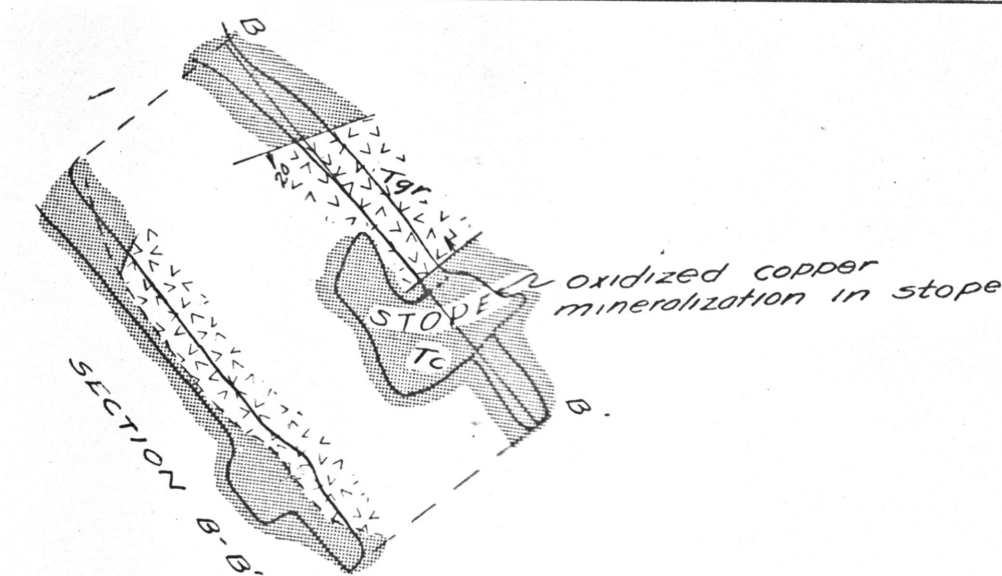
Note: Base map of workings
by H. N. Wolcott modified by
U.S.G.S.



SECTION A-A'

EXPLANATION

- K Cretaceous, arkoses and conglomerates
- UNCONFORMITY
- PSH Snyder Hill formation of Stoyanow
- PUM Upper Manzano beds
Interbedded quartzite and limestone
- Cn Naco limestone
- Tgr Quartz monzonite porphyry
- Tc Silicated limestone, usually garnet bearing, in part mineralized
- ▀ Shaft
- ▣ ▤ Winze, raise
- Overhead tram
- ⊃ Mine workings and dump
- ↗ ↘ Strike and dip of beds & vertical beds
- ↗ ↘ Strike of overturned beds
- Unimproved road
- Fault, dashed where location is uncertain
- Contact, dashed where location is uncertain
- } R Open cut



Workings about 250 feet NNE of Rosemont portal
TAPE AND BRUNTON SURVEY

GENERALIZED
TOPOGRAPHIC, GEOLOGIC AND UNDERGROUND MAP
OF THE
ROSEMONT LEASE
HELVETIA MINING DISTRICT, PIMA COUNTY, ARIZONA
GEOLOGY BY S.C. CREASEY
TOPOGRAPHY BY H.H. SULLWOLD, JR.
FEBRUARY 1943
UNITED STATES GEOLOGICAL SURVEY