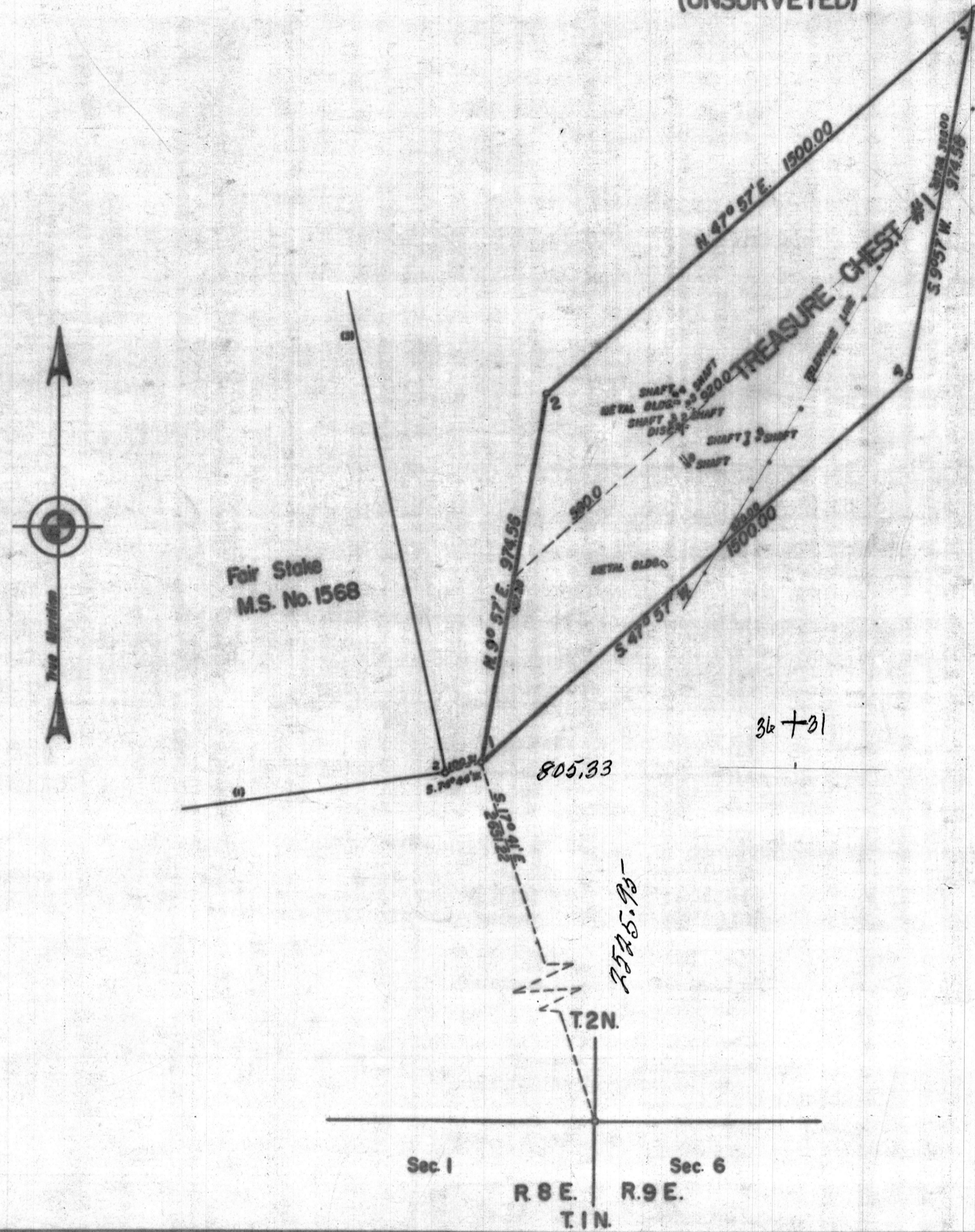


TOWNSHIP 2 NORTH, RANGE 889 EAST, G. & S.R.M.
(UNSURVEYED)

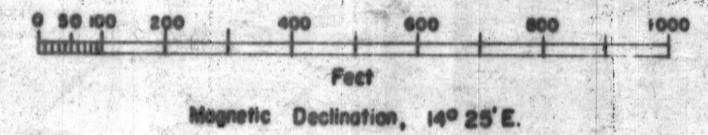


**MINERAL SURVEY
No. 4507
ARIZONA**

CLAIM OF
ROY GALBRAITH

KNOWN AS THE
TREASURE CHEST # 1

SITUATE IN
T. 2 N., R. 8 & 9 E., G. & S. R. M. (Unsurveyed)
MARICOPA COUNTY
Superstition Mining District
Arizona Land District
Lat. 33° 26' 10" N., Long. 111° 28' 35" W., at
Cor. No. 1, Treasure Chest #1 lode



Surveyed August 27 to August 31, 1959
by Oscar T. Smith Mineral Surveyor

UNITED STATES DEPARTMENT OF THE INTERIOR
BUREAU OF LAND MANAGEMENT

Phoenix, Arizona DEC. 2, 1959

I hereby certify that this plot of Mineral Survey No. 4507 Arizona, is strictly conformable to the field notes of said survey which have been examined and approved.

Dexter S. Mann
Office, Cadastral Engineer

Date 6-23-61
No. 1220767
No. Ariz 02151